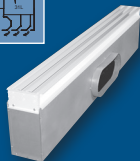


PTBS
This plenum slot supply diffuser features an adjustable blade.
Slots: 1 to 4
Slot Widths: ¾", 1", 1½"



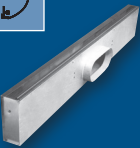
PTBA
This plenum slot supply diffuser features "Ice Tong" blades.
Slots: 1 to 4
Slot Widths: ¾", 1"



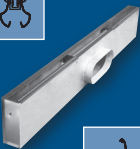
PTBT
This plenum slot supply diffuser features fixed, curved blades.
Slots: 1 to 4*
** 1 to 4 slots available with 1-way deflection, 2 to 4 slots available with 2-way deflection.*



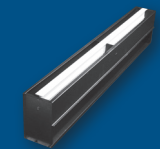
PTBSS, PTBSSF, & PFTBS (FR)
These plenum slot supply diffusers feature a fixed curved blade. Available with fire damper (PFTBS) and factory installed blades (PTBSSF).
Slots: 1 or 2
Slot Widths: ¾", 1", 1½"
***¾" Slot width only available on model PFTBS.*



PTBSC, PTBSRC
The plenum slot supply (PTBSC) diffuser features a fixed horizontal pattern controller to provide 1-way airflow; also available with a return slot (PTBSRC).



PTBSCDB, PTBSRCDB
The plenum slot supply (PTBSCDB) diffuser features a center downblow and a fixed horizontal pattern controller to provide 1-way airflow; also available with a return slot (PTBSRCDB).



PTBR/PFTBR (FR)
These plenum slot return diffusers are available with a fire damper (PFTBR) or without (PTBR).

PTBS

Introduction & Dimensional Information F1-3
Accessories..... F1-5
Reference Charts..... F1-7
Performance Data..... F1-9
Engineering Specification F1-27

PTBA

Introduction & Dimensional Information F1-28
Accessories..... F1-30
Reference Charts..... F1-31
Performance Data..... F1-33
Engineering Specification F1-41

PTBT

Introduction & Dimensional Information F1-42
Pattern Designations & Plaster Frame..... F1-43
Inlet Collars F1-44
Reference Charts..... F1-45
Performance Data..... F1-47
Engineering Specification F1-51

PTBSS, PTBSSF & PFTBS (Fire Rated)

Introduction & Dimensional Information F1-52
Accessories..... F1-54
Reference Charts..... F1-56
Performance Data..... F1-58
Engineering Specifications..... F1-66

PTBSC, PTBSRC, PTBSCDB, PTBSRCDB

Introduction F1-68
Dimensional Information F1-69
Reference Charts..... F1-71
Performance Data..... F1-73
Engineering Specifications..... F1-78

PTBR & PFTBR (Fire Rated)

Introduction & Dimensional Information F1-80
Accessories..... F1-81
Reference Charts..... F1-82
Performance Data..... F1-83
Engineering Specifications..... F1-87



PTBA

Introduction: PTBA

The PTBA series plenum slot diffuser features “ice tong” blades that allow for adjustment from horizontal flow to vertical flow. The “ice tong” blades allow the occupant to easily adjust the airflow pattern depending on airflow requirements. The plenum is an integral part of the diffuser and has a drawn inlet collar to prevent plenum air leakage and simplify installation of the diffuser. The fully adjustable discharge air pattern from horizontal to vertical and any point in between makes Krueger’s PTBA series diffuser an ideal choice for perimeter heating and VAV cooling applications.

MODEL

PTBA - Plenum Slot Diffuser with ‘Ice Tong’ Type Blades

FEATURES

- Slots: 1, 2, 3, or 4.
- Slot Widths: 3/4” and 1”.
- Lengths: 24”, 36”, 48”, and 60”.
- Adjustable extruded aluminum blades.
- Double metal thickness at slot face for rigidity and straightness.

ACCESSORIES

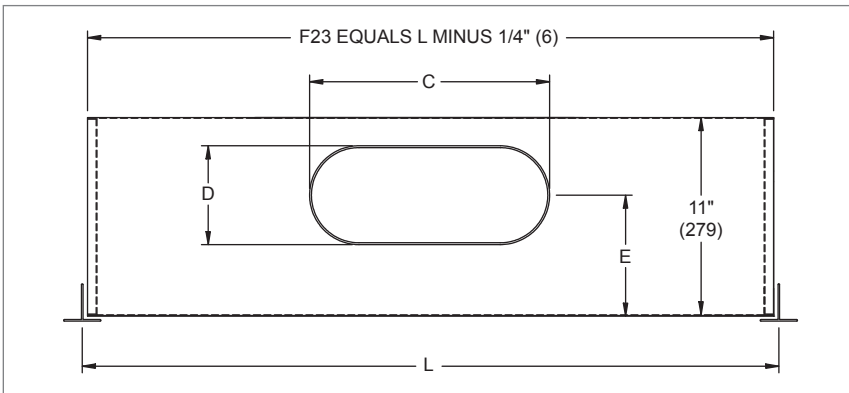
- Quadrant Damper
- Insulation
- Mounting Tabs
- Plaster Frame

FINISHES

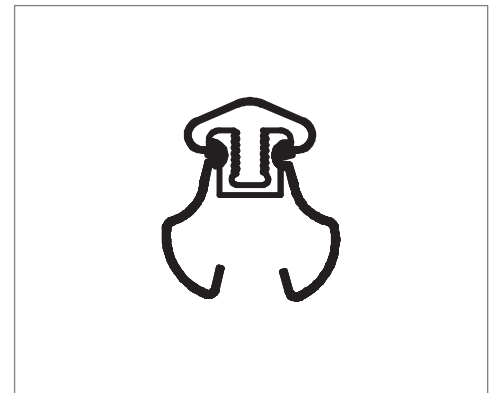
- Standard finish is black face with optional white tees.
- Optional finishes available.

PTBA Dimensional Information

PTBA, INLET SIDE VIEW



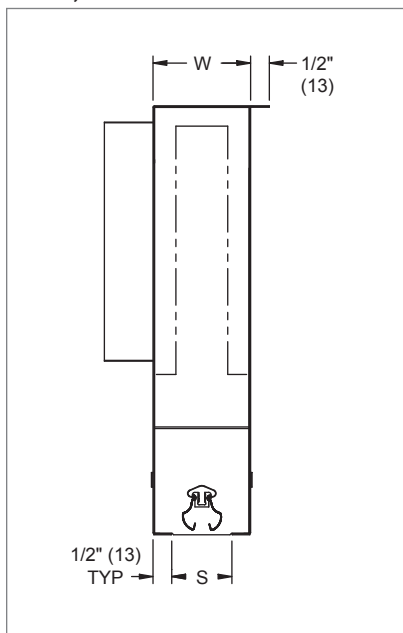
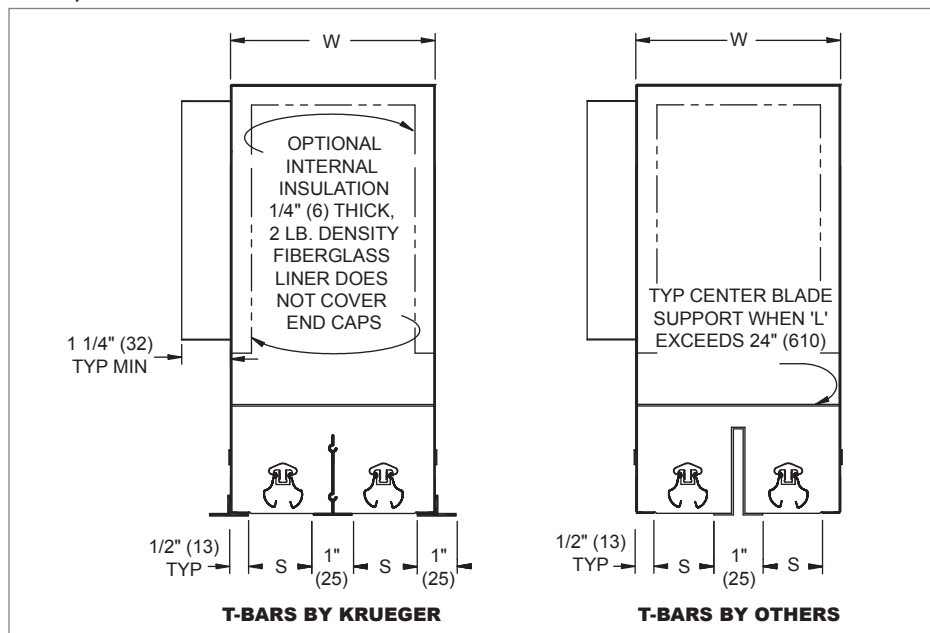
PTBA, PATTERN CONTROLLER



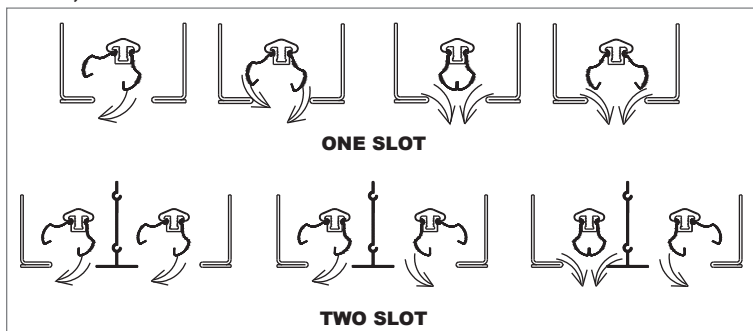
PTBA, AVAILABLE SIZES

Inlet Size	C	D	E	L
5" (127) Round	4 7/8" (124)	4 7/8" (124)	6 3/16" (157)	24" (610) - 36" (914)
6" (152) Oval	6 1/4" (159)	5 1/4" (133)	6 3/8" (162)	24" (610) - 60" (1524)
8" (203) Oval	9 3/8" (238)	5 1/4" (133)	6 3/8" (162)	24" (610) - 60" (1524)
10" (254) Oval	12 1/2" (318)	5 1/4" (133)	6 3/8" (162)	24" (610) - 60" (1524)
12" (305) Oval	15 9/16" (395)	5 1/4" (133)	6 3/8" (162)	48" (1219) - 60" (1524)

NOTE: Dimensions in parentheses are mm.

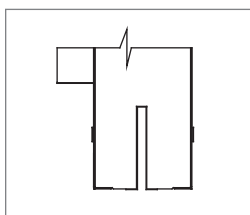
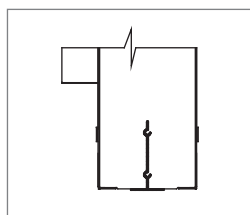
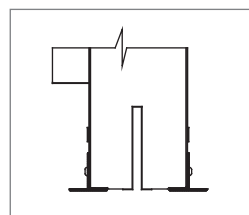
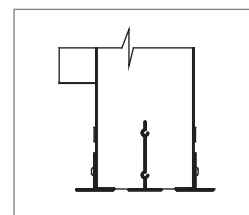
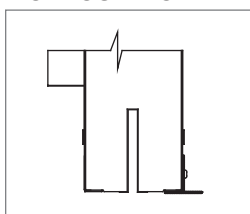
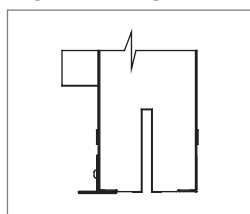
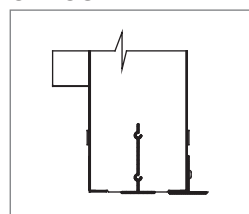
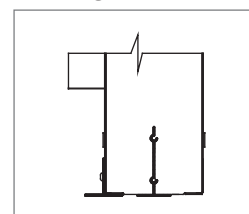
PTBA Dimensional Information
PTBA, 1-SLOT CROSS SECTION

PTBA, 2-SLOT CROSS SECTION


PLENUM SLOT DIFFUSERS

PTBA, ADJUSTABLE AIR DISCHARGE PATTERNS

PTBA, AVAILABLE SIZES

S	W			
	1-Slot	2-Slot	3-Slot	4-Slot
3/4" (19)	1 3/4" (44)	3 1/2" (89)	5 1/4" (133)	7" (178)
1" (25)	2" (51)	4" (102)	6" (152)	8" (203)

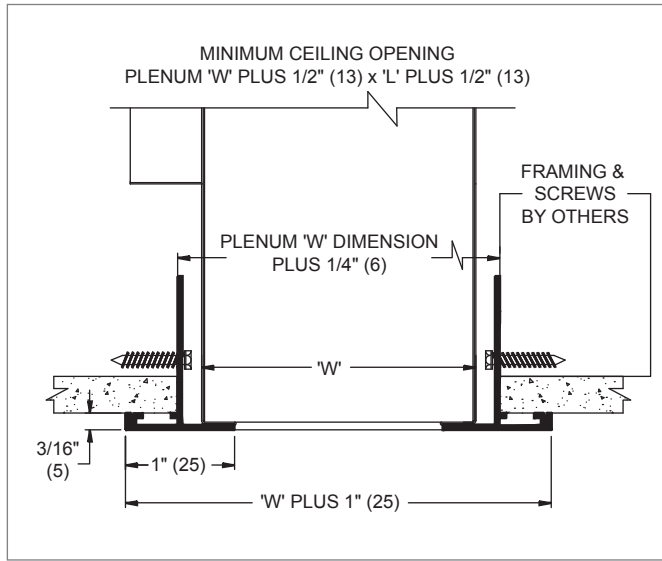
NOTE: Dimensions in parentheses are mm.

FRAME 23A, T BY OTHERS

FRAME 23B, CENTER T ONLY

FRAME 23C, T ON BOTH ENDS

FRAME 23D, CENTER & OUTER T

FRAME 23EL, T OPPOSITE OF INLET

FRAME 23ER, T ON INLET SIDE

FRAME 23GL, T ON CENTER & OPPOSITE INLET

FRAME 23GR, T ON CENTER & INLET SIDE


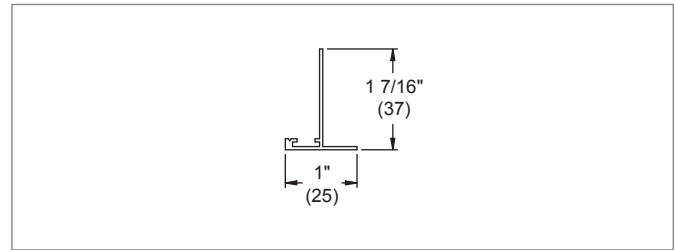
PTBA Accessories for Frame 23 Lay-In T-Bar

PLENUM SLOT DIFFUSERS

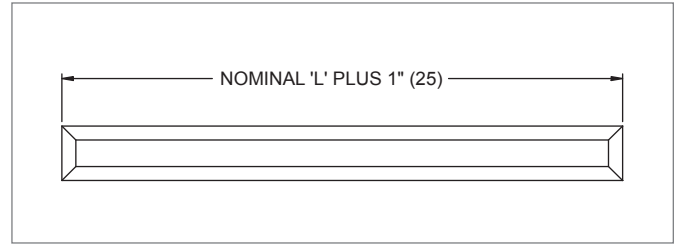
PTBA, PLASTER FRAME ASSEMBLY



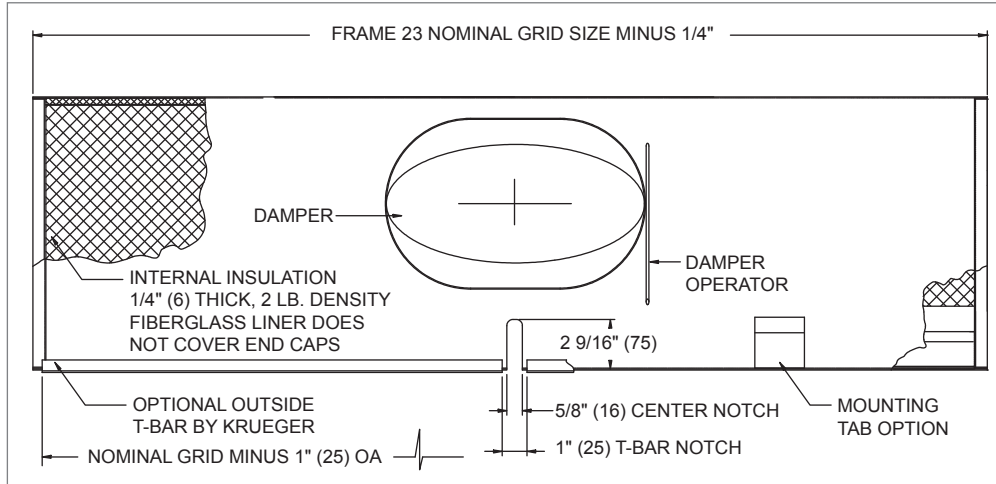
PTBA, PLASTER FRAME ADAPTER, CROSS SECTION



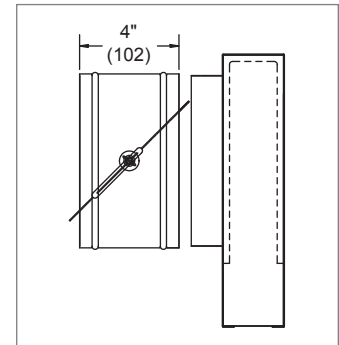
PTBA, PLASTER FRAME, FACE VIEW



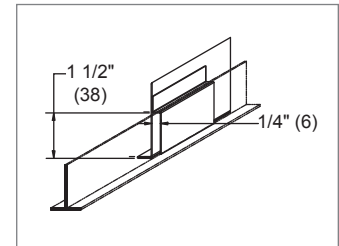
PTBA, CENTER NOTCH DETAIL (CN)



PTBA, QUADRANT DAMPER (QD)

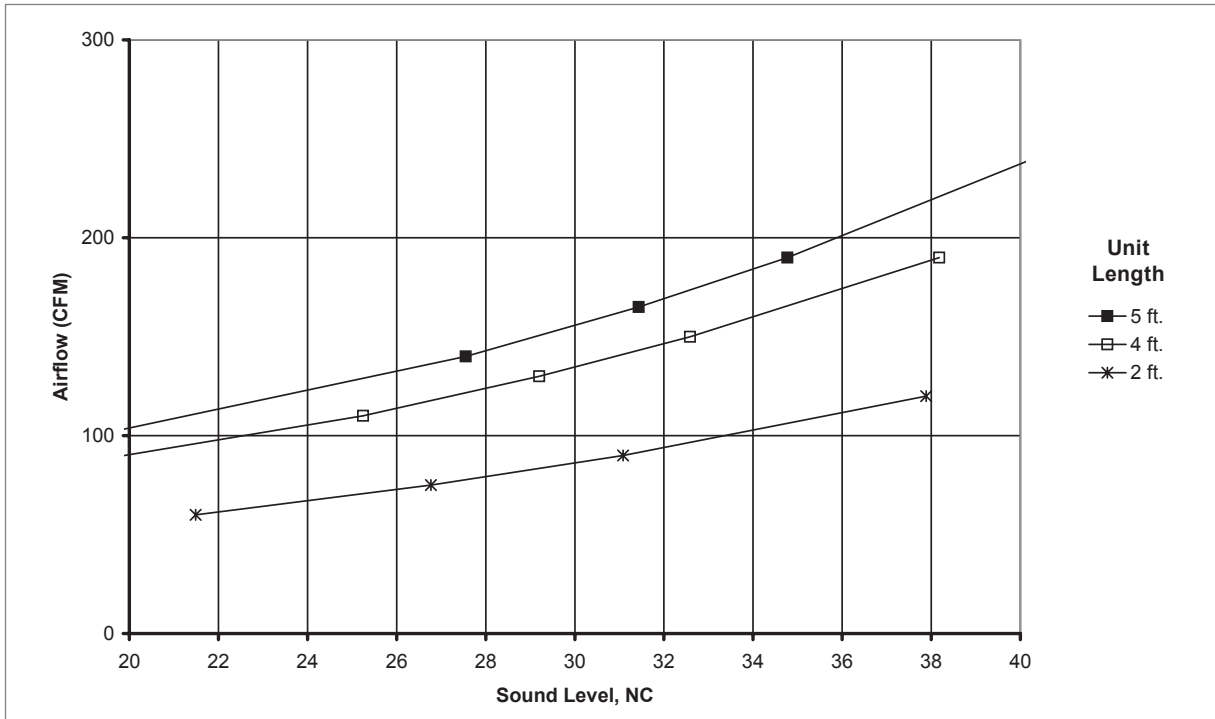
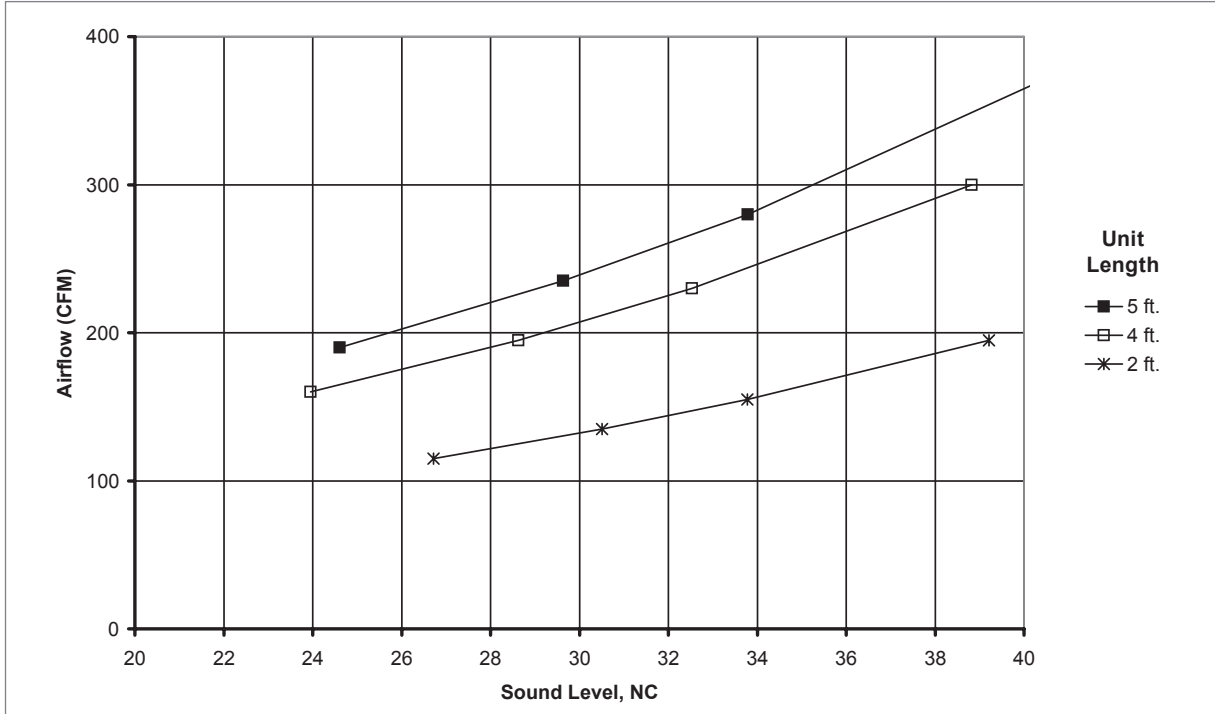


PTBA, MOUNTING TABS (MTT)



NOTES: Dimensions in parentheses are mm.
MTT1 uses mounting tabs opposite of inlet. MTT2 uses mounting tabs on both sides.
CN = Center Notch; CNT1 = CN+MTT1; CNT2 = CN+MTT2

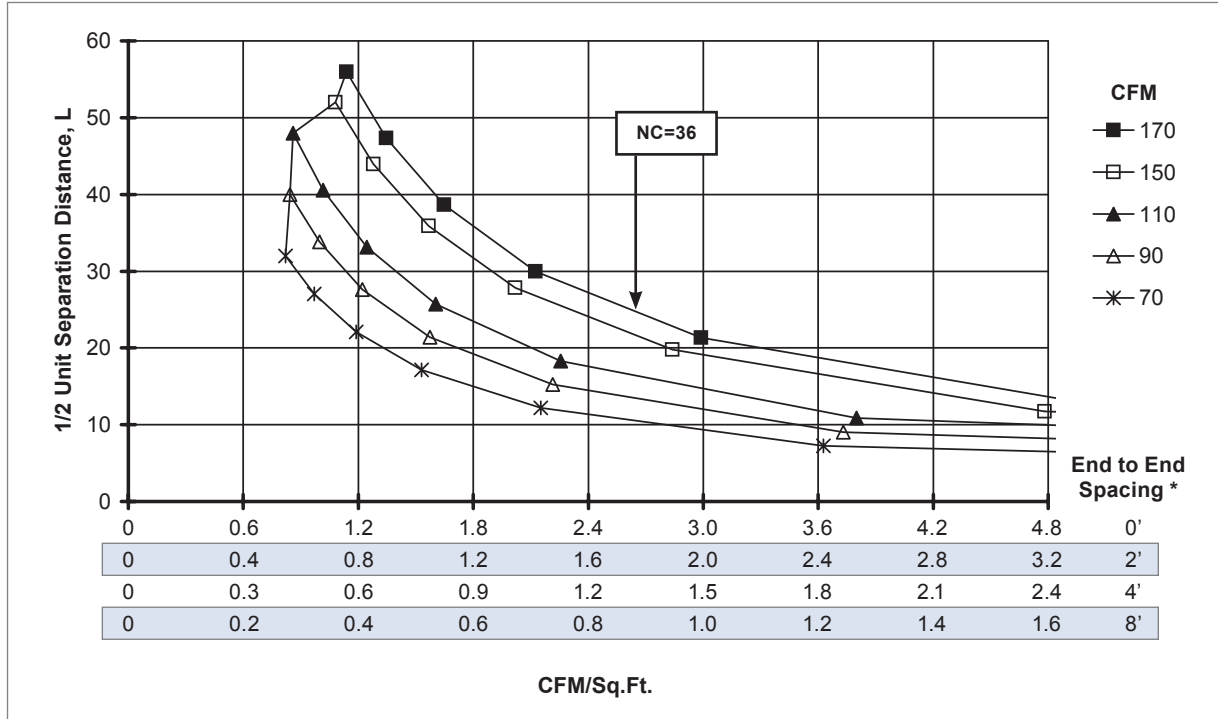
P
T
B
A

PTBA Reference Charts
AIRFLOW VS. NC LEVEL: PTBA, 3/4" SLOT WIDTH, 1-SLOT, 8" OVAL INLET, 1-WAY (NO DAMPER)

AIRFLOW VS. NC LEVEL: PTBA, 1" SLOT WIDTH, 2-SLOT, 8" OVAL INLET, 2-WAY (NO DAMPER)


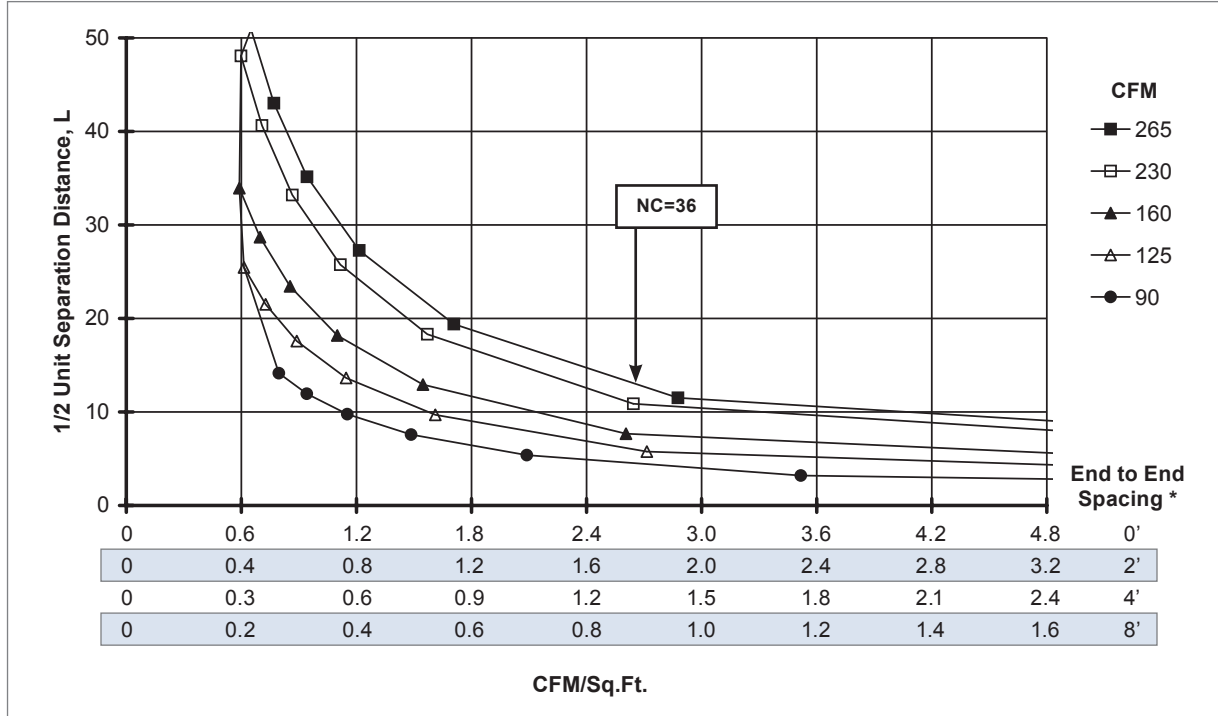
PTBA Reference Charts: Horizontal Throw, 4 ft. Length

DIFFUSER SPACING FOR 80% ADPI: PTBA, 3/4" SLOT WIDTH, 1-SLOT, 8" OVAL INLET, 1-WAY (NO DAMPER)

PLENUM SLOT DIFFUSERS



DIFFUSER SPACING FOR 80% ADPI: PTBA, 1" SLOT WIDTH, 2-SLOT, 8" OVAL INLET, 2-WAY (NO DAMPER)



NOTES: Charts are at 20 BTUH/ft² loads.

See the Engineering section of this catalog for instructions on how to read these charts and additional ADPI information.

* Separation distance in feet between active supply sections discharging in similar directions.

P
T
B
A

© KRUEGER 2012

PTBA Performance Data: Horizontal Throw

IP/METRIC DATA: PTBA, 3/4" SLOT WIDTH, 1-SLOT, 1-WAY (NO DAMPER)

	Linear Length	IP Data				NC	Metric Data				Octave Band, dB					
		Air Flow	Pressure		1-Way Throw		Air Flow	Pressure		1-Way Throw	2	3	4	5	6	7
			CFM	"WG				"WG	ft							
3/4" Slot Width 6" Oval Inlet	2'	20	0.011	0.011	1 - 3 - 10	-	9	2.7	2.9	0.4 - 1.0 - 3.1	33	24	19	-	-	-
		50	0.067	0.072	8 - 13 - 24	21	24	16.7	17.8	2.5 - 3.8 - 7.3	46	44	43	31	28	18
		65	0.113	0.121	11 - 16 - 27	27	31	28.2	30.1	3.3 - 5.0 - 8.3	50	50	50	38	35	28
		80	0.172	0.183	13 - 20 - 30	32	38	42.8	45.6	4.1 - 6.1 - 9.2	53	55	55	44	42	37
		110	0.325	0.346	18 - 25 - 36	40	52	80.9	86.3	5.6 - 7.7 - 10.8	57	62	64	52	51	51
	4'	40	0.011	0.014	2 - 5 - 9	-	19	2.8	3.5	0.6 - 1.4 - 2.9	33	24	-	-	-	-
		85	0.051	0.064	7 - 10 - 14	23	40	12.8	16.0	2.0 - 3.1 - 4.4	44	41	29	27	23	11
		108	0.082	0.103	8 - 11 - 16	29	51	20.5	25.6	2.6 - 3.5 - 4.9	47	46	35	33	30	21
		130	0.120	0.150	10 - 13 - 18	33	61	29.9	37.5	3.1 - 3.8 - 5.4	50	50	40	38	35	28
	5'	175	0.218	0.273	12 - 15 - 21	40	83	54.2	67.9	3.6 - 4.4 - 6.3	54	57	48	46	44	41
		50	0.013	0.018	2 - 5 - 11	-	24	3.3	4.4	0.7 - 1.6 - 3.2	33	24	-	-	-	-
		100	0.053	0.070	7 - 11 - 16	24	47	13.1	17.5	2.1 - 3.2 - 4.7	43	39	24	26	21	-
125		0.082	0.110	9 - 12 - 17	29	59	20.5	27.4	2.7 - 3.7 - 5.3	46	44	30	31	28	18	
150		0.118	0.159	11 - 13 - 19	33	71	29.5	39.5	3.2 - 4.1 - 5.8	49	48	35	36	33	25	
3/4" Slot Width 8" Oval Inlet	2'	200	0.210	0.282	13 - 16 - 22	40	94	52.4	70.2	3.9 - 4.7 - 6.7	53	55	43	44	42	37
		30	0.041	0.041	3 - 7 - 15	-	14	10.1	10.3	1.0 - 2.2 - 4.6	39	33	36	18	12	-
		60	0.163	0.165	10 - 15 - 26	21	28	40.6	41.2	3.1 - 4.6 - 8.0	49	48	54	36	33	25
		75	0.255	0.259	13 - 19 - 29	27	35	63.4	64.4	3.8 - 5.7 - 8.9	52	53	60	42	40	34
		90	0.367	0.372	15 - 23 - 32	31	42	91.3	92.7	4.6 - 6.9 - 9.8	54	57	65	47	45	42
	4'	120	0.652	0.662	20 - 26 - 37	38	57	162.3	164.8	6.1 - 8.0 - 11.3	58	64	73	55	54	54
		70	0.031	0.034	6 - 8 - 13	15	33	7.7	8.5	1.7 - 2.5 - 4.0	41	36	31	22	17	-
		110	0.076	0.085	9 - 12 - 16	25	52	19.0	21.1	2.6 - 3.5 - 5.0	47	46	42	34	30	21
		130	0.107	0.118	10 - 13 - 18	29	61	26.6	29.5	3.1 - 3.8 - 5.4	50	50	47	38	35	28
	5'	150	0.142	0.158	11 - 13 - 19	33	71	35.4	39.2	3.3 - 4.1 - 5.8	52	53	51	42	40	34
		190	0.228	0.253	12 - 15 - 21	38	90	56.8	62.9	3.8 - 4.6 - 6.5	55	58	57	49	47	44
		90	0.033	0.039	6 - 10 - 15	17	42	8.3	9.7	1.9 - 2.9 - 4.5	41	37	28	23	18	-
140		0.081	0.094	10 - 13 - 18	28	66	20.1	23.5	3.0 - 4.0 - 5.6	48	47	40	34	31	22	
165		0.112	0.131	12 - 14 - 20	31	78	27.9	32.6	3.5 - 4.3 - 6.1	50	50	44	39	36	29	
3/4" Slot Width 10" Oval Inlet	2'	190	0.149	0.174	12 - 15 - 21	35	90	37.0	43.2	3.8 - 4.6 - 6.5	52	53	48	43	40	35
		240	0.237	0.277	14 - 17 - 24	40	113	59.1	68.9	4.2 - 5.2 - 7.3	55	59	54	49	47	45
		40	0.160	0.161	6 - 10 - 20	-	19	39.9	40.1	1.7 - 3.1 - 6.1	43	39	48	26	21	-
		80	0.641	0.644	13 - 20 - 30	26	38	159.7	160.2	4.1 - 6.1 - 9.2	53	55	66	44	42	37
		100	1.002	1.005	17 - 24 - 34	31	47	249.5	250.4	5.1 - 7.3 - 10.3	56	60	72	50	48	47
	4'	120	1.443	1.448	20 - 26 - 37	35	57	359.2	360.5	6.1 - 8.0 - 11.3	58	64	77	55	54	54
		160	2.565	2.574	25 - 30 - 43	42	76	638.6	640.9	7.5 - 9.2 - 13.1	62	70	85	62	63	66
		80	0.046	0.048	6 - 9 - 14	15	38	11.4	12.0	1.9 - 2.9 - 4.2	43	39	39	26	21	-
		130	0.121	0.127	10 - 13 - 18	27	61	30.1	31.6	3.1 - 3.8 - 5.4	50	50	51	38	35	28
	5'	155	0.172	0.180	11 - 14 - 19	31	73	42.8	44.9	3.4 - 4.2 - 5.9	52	54	56	43	41	36
		180	0.232	0.243	12 - 15 - 21	34	85	57.7	60.6	3.7 - 4.5 - 6.3	54	57	60	47	45	42
		230	0.378	0.397	14 - 17 - 24	40	109	94.2	99.0	4.1 - 5.1 - 7.2	58	63	66	54	53	52
90		0.033	0.036	6 - 10 - 15	14	42	8.3	9.0	1.9 - 2.9 - 4.5	41	37	33	23	18	-	
150		0.092	0.101	11 - 13 - 19	26	71	23.0	25.1	3.2 - 4.1 - 5.8	49	48	46	36	33	25	
3/4" Slot Width 12" Oval Inlet	4'	180	0.133	0.145	12 - 15 - 21	31	85	33.2	36.1	3.7 - 4.5 - 6.3	51	52	51	41	39	33
		210	0.181	0.197	13 - 16 - 23	34	99	45.1	49.1	4.0 - 4.8 - 6.9	53	56	55	45	43	39
		270	0.300	0.326	15 - 18 - 26	40	127	74.6	81.2	4.5 - 5.5 - 7.8	57	61	61	52	51	50
		90	0.118	0.119	7 - 10 - 15	14	42	29.4	29.6	2.2 - 3.2 - 4.5	45	42	49	29	24	13
		150	0.328	0.331	11 - 13 - 19	26	71	81.6	82.3	3.3 - 4.1 - 5.8	52	53	62	42	40	34
	5'	180	0.472	0.476	12 - 15 - 21	30	85	117.5	118.5	3.7 - 4.5 - 6.3	54	57	67	47	45	42
		210	0.642	0.648	13 - 16 - 23	34	99	159.9	161.4	4.0 - 4.8 - 6.9	56	61	71	51	50	49
		270	1.061	1.071	15 - 18 - 26	40	127	264.3	266.7	4.5 - 5.5 - 7.8	60	66	77	58	58	59
		100	0.061	0.063	7 - 11 - 16	13	47	15.3	15.6	2.1 - 3.2 - 4.7	43	39	42	26	21	-
		170	0.177	0.181	12 - 14 - 20	25	80	44.2	45.2	3.6 - 4.4 - 6.2	50	51	56	40	37	30
	5'	205	0.258	0.264	13 - 16 - 22	30	97	64.3	65.7	3.9 - 4.8 - 6.8	53	55	61	45	42	38
		240	0.354	0.361	14 - 17 - 24	33	113	88.1	90.0	4.2 - 5.2 - 7.3	55	59	65	49	47	45
310		0.590	0.603	16 - 19 - 27	40	146	146.9	150.2	4.8 - 5.9 - 8.3	59	64	72	56	55	56	

NOTE: See notes on page F1-26.

PTBA Performance Data: Horizontal Throw

IP/METRIC DATA: PTBA, 3/4" SLOT WIDTH, 2-SLOT, 1-WAY (NO DAMPER)

PLENUM SLOT DIFFUSERS

	Linear Length	IP Data				NC	Metric Data				Octave Band, dB						
		Air Flow	Pressure		1-Way Throw		Air Flow	Pressure		1-Way Throw	2	3	4	5	6	7	
			Ps	Pt				Ps	Pt								
		CFM	"WG	"WG	ft		L/s	Pa	Pa	m							
3/4" Slot Width	2'	60	0.026	0.032	5 - 10 - 21	15	28	6.4	8.0	1.4 - 3.1 - 6.5	39	33	20	18	12	-	
		100	0.071	0.089	12 - 18 - 34	27	47	17.7	22.2	3.6 - 5.4 - 10.3	46	44	33	31	28	18	
		120	0.102	0.128	14 - 21 - 37	31	57	25.5	31.9	4.3 - 6.5 - 11.3	49	48	38	36	33	25	
		140	0.139	0.174	17 - 25 - 40	35	66	34.7	43.4	5.0 - 7.6 - 12.2	51	52	42	40	38	32	
	6" Oval Inlet	4'	180	0.230	0.288	21 - 32 - 46	41	85	57.4	71.8	6.5 - 9.7 - 13.8	54	57	49	47	45	42
			75	0.018	0.028	3 - 6 - 13	-	35	4.4	7.0	0.8 - 1.7 - 3.8	32	23	-	-	-	-
			135	0.058	0.090	8 - 11 - 18	24	64	14.4	22.5	2.3 - 3.4 - 5.5	41	36	13	21	16	-
			165	0.086	0.135	9 - 14 - 20	28	78	21.5	33.6	2.8 - 4.2 - 6.1	43	40	19	26	22	-
		5'	195	0.121	0.189	11 - 15 - 22	32	92	30.1	47.0	3.3 - 4.7 - 6.6	46	44	23	31	27	16
			255	0.206	0.323	14 - 18 - 25	39	120	51.4	80.3	4.3 - 5.3 - 7.6	49	50	30	38	35	28
			85	0.019	0.032	2 - 5 - 13	-	40	4.7	7.9	0.7 - 1.6 - 3.9	31	20	-	-	-	-
			155	0.063	0.106	8 - 12 - 19	23	73	15.7	26.4	2.3 - 3.5 - 5.9	39	34	-	19	13	-
3/4" Slot Width	2'	190	0.095	0.159	9 - 14 - 21	28	90	23.6	39.7	2.9 - 4.3 - 6.5	42	38	13	24	19	-	
		225	0.133	0.223	11 - 17 - 23	32	106	33.1	55.6	3.4 - 5.0 - 7.1	45	42	18	29	24	13	
		295	0.229	0.384	15 - 19 - 27	39	139	56.9	95.7	4.5 - 5.7 - 8.1	48	48	25	36	33	24	
		75	0.036	0.039	7 - 13 - 27	16	35	8.8	9.8	2.2 - 4.1 - 8.1	42	38	32	24	19	-	
	8" Oval Inlet	4'	125	0.099	0.109	15 - 22 - 38	28	59	24.6	27.2	4.5 - 6.8 - 11.5	49	49	46	37	34	27
			150	0.142	0.158	18 - 27 - 42	33	71	35.4	39.2	5.4 - 8.1 - 12.6	52	53	51	42	40	34
			175	0.193	0.214	21 - 31 - 45	36	83	48.1	53.4	6.3 - 9.5 - 13.6	54	57	55	46	44	41
			225	0.320	0.355	27 - 36 - 51	42	106	79.6	88.3	8.1 - 10.9 - 15.5	57	62	61	53	52	51
		5'	100	0.020	0.027	4 - 8 - 16	12	47	5.1	6.8	1.4 - 2.5 - 4.7	36	29	12	13	-	-
			170	0.059	0.079	9 - 14 - 20	25	80	14.7	19.7	2.9 - 4.3 - 6.2	44	41	26	27	23	11
			205	0.086	0.115	11 - 16 - 22	29	97	21.4	28.6	3.5 - 4.8 - 6.8	46	45	31	32	28	19
			240	0.118	0.157	13 - 17 - 24	33	113	29.3	39.2	4.1 - 5.2 - 7.3	49	48	35	36	33	25
5'	310	0.196	0.263	16 - 19 - 27	39	146	48.9	65.4	4.8 - 5.9 - 8.3	52	54	42	43	41	36		
	120	0.023	0.033	5 - 9 - 17	13	57	5.7	8.1	1.4 - 2.7 - 5.2	36	28	-	12	-	-		
	210	0.069	0.100	10 - 16 - 23	27	99	17.3	24.9	3.2 - 4.8 - 6.9	44	40	23	27	22	-		
	255	0.102	0.147	13 - 18 - 25	31	120	25.5	36.7	3.9 - 5.3 - 7.6	46	45	28	32	28	18		
3/4" Slot Width	2'	300	0.142	0.204	15 - 19 - 27	35	142	35.3	50.8	4.6 - 5.8 - 8.2	49	48	32	36	33	25	
		390	0.240	0.345	18 - 22 - 31	41	184	59.7	85.8	5.4 - 6.6 - 9.3	52	54	39	43	41	36	
		80	0.046	0.048	8 - 14 - 28	15	38	11.4	12.0	2.5 - 4.3 - 8.6	43	39	39	26	21	-	
		130	0.121	0.127	15 - 23 - 39	27	61	30.1	31.6	4.7 - 7.0 - 11.8	50	50	51	38	35	28	
	10" Oval Inlet	4'	155	0.172	0.180	18 - 28 - 42	31	73	42.8	44.9	5.6 - 8.4 - 12.8	52	54	56	43	41	36
			180	0.232	0.243	21 - 32 - 46	34	85	57.7	60.6	6.5 - 9.7 - 13.8	54	57	60	47	45	42
			230	0.378	0.397	27 - 36 - 51	40	109	94.2	99.0	8.3 - 11.1 - 15.6	58	63	66	54	53	52
			120	0.024	0.030	6 - 10 - 17	14	57	6.1	7.4	2.0 - 3.1 - 5.2	39	33	21	18	12	-
		5'	210	0.075	0.091	12 - 16 - 23	27	99	18.6	22.6	3.6 - 4.8 - 6.9	47	45	36	33	29	20
			255	0.110	0.134	14 - 18 - 25	32	120	27.4	33.2	4.3 - 5.3 - 7.6	49	50	41	38	35	28
			300	0.152	0.185	16 - 19 - 27	36	142	37.9	46.0	4.7 - 5.8 - 8.2	52	53	45	42	40	34
			390	0.257	0.312	18 - 22 - 31	42	184	64.0	77.8	5.4 - 6.6 - 9.3	55	59	52	49	48	45
3/4" Slot Width	4'	130	0.021	0.027	5 - 10 - 18	13	61	5.1	6.7	1.7 - 3.0 - 5.4	37	30	15	14	-	-	
		230	0.065	0.084	11 - 17 - 24	26	109	16.1	20.9	3.5 - 5.1 - 7.2	45	42	29	29	25	14	
		280	0.096	0.124	14 - 18 - 26	31	132	23.9	30.9	4.3 - 5.6 - 7.9	48	47	35	34	31	22	
		330	0.133	0.173	16 - 20 - 28	35	156	33.1	43.0	5.0 - 6.1 - 8.6	50	50	39	39	36	29	
	12" Oval Inlet	5'	430	0.226	0.293	19 - 23 - 32	41	203	56.2	72.9	5.7 - 6.9 - 9.8	54	56	46	46	44	40
			120	0.023	0.025	6 - 10 - 17	-	57	5.8	6.3	2.0 - 3.1 - 5.2	39	33	28	18	12	-
			220	0.078	0.085	12 - 16 - 23	24	104	19.5	21.1	3.7 - 5.0 - 7.0	47	46	44	34	30	21
			270	0.118	0.128	15 - 18 - 26	29	127	29.3	31.8	4.5 - 5.5 - 7.8	50	51	50	39	37	30
		5'	320	0.166	0.179	16 - 20 - 28	33	151	41.2	44.7	4.9 - 6.0 - 8.5	53	55	54	44	42	37
			420	0.285	0.309	18 - 23 - 32	40	198	71.0	76.9	5.6 - 6.9 - 9.7	56	61	61	51	50	49
			140	0.020	0.022	6 - 10 - 18	-	66	4.9	5.6	1.9 - 3.2 - 5.6	38	31	23	16	-	-
			260	0.068	0.077	13 - 18 - 25	25	123	17.0	19.3	3.9 - 5.4 - 7.6	47	45	40	33	29	19
5'	320	0.103	0.117	16 - 20 - 28	30	151	25.7	29.2	4.9 - 6.0 - 8.5	49	50	45	38	35	28		
	380	0.146	0.165	18 - 21 - 30	34	179	36.3	41.1	5.3 - 6.5 - 9.2	52	53	50	43	40	35		
	500	0.252	0.286	20 - 25 - 35	40	236	62.8	71.2	6.1 - 7.5 - 10.6	56	60	57	50	48	47		

NOTE: See notes on page F1-26.

© KRUEGER 2012

PTBA Performance Data: Horizontal Throw

IP/METRIC DATA: PTBA, 3/4" SLOT WIDTH, 3-SLOT, 1-WAY (NO DAMPER)

	Linear Length	IP Data				NC	Metric Data				Octave Band, dB						
		Air Flow	Pressure		1-Way Throw		Air Flow	Pressure		1-Way Throw	2	3	4	5	6	7	
			CFM	"WG				"WG	ft								L/s
3/4" Slot Width 6" Oval Inlet	2'	60	0.015	0.022	4 - 8 - 20	-	28	3.8	5.4	1.1 - 2.5 - 6.0	33	24	-	-	-	-	
		110	0.051	0.073	12 - 18 - 36	23	52	12.8	18.2	3.7 - 5.5 - 10.8	42	37	20	23	18	-	
		135	0.077	0.110	15 - 22 - 39	28	64	19.2	27.4	4.5 - 6.8 - 12.0	45	42	25	29	24	13	
		160	0.109	0.154	18 - 26 - 43	32	76	27.0	38.4	5.3 - 8.0 - 13.1	47	46	29	33	29	20	
		210	0.187	0.266	23 - 35 - 49	38	99	46.6	66.2	7.0 - 10.5 - 15.0	51	52	37	40	38	32	
	4'	100	0.023	0.041	4 - 8 - 16	-	47	5.7	10.2	1.1 - 2.4 - 4.7	31	20	-	-	-	-	
		180	0.074	0.132	9 - 14 - 21	24	85	18.5	32.9	2.8 - 4.2 - 6.3	39	33	-	18	12	-	
		220	0.111	0.198	11 - 16 - 23	29	104	27.7	49.2	3.5 - 5.0 - 7.0	42	37	-	23	18	-	
		260	0.155	0.276	13 - 18 - 25	33	123	38.7	68.7	4.1 - 5.4 - 7.6	44	41	14	28	23	12	
	5'	340	0.265	0.472	17 - 20 - 29	39	160	66.1	117.5	5.0 - 6.2 - 8.7	48	47	21	35	31	23	
		120	0.029	0.054	4 - 8 - 17	11	57	7.1	13.5	1.1 - 2.5 - 5.1	30	19	-	-	-	-	
		210	0.088	0.167	10 - 15 - 23	24	99	21.9	41.5	3.0 - 4.4 - 6.9	38	31	-	16	-	-	
255		0.129	0.246	12 - 18 - 25	29	120	32.2	61.2	3.6 - 5.3 - 7.6	41	36	-	21	16	-		
3/4" Slot Width 8" Oval Inlet	2'	75	0.017	0.021	6 - 12 - 25	-	35	4.3	5.2	1.7 - 3.8 - 7.5	36	29	16	13	-	-	
		135	0.056	0.068	15 - 22 - 39	24	64	13.8	17.0	4.5 - 6.8 - 12.0	45	42	32	29	24	13	
		165	0.083	0.102	18 - 27 - 44	29	78	20.7	25.4	5.5 - 8.3 - 13.3	47	46	37	34	30	21	
		195	0.116	0.142	21 - 32 - 47	33	92	28.9	35.4	6.5 - 9.8 - 14.4	50	50	41	38	35	28	
		255	0.198	0.243	28 - 38 - 54	39	120	49.4	60.6	8.5 - 11.7 - 16.5	53	56	48	46	44	40	
	4'	115	0.017	0.026	5 - 9 - 17	-	54	4.3	6.6	1.4 - 2.7 - 5.1	33	23	-	-	-	-	
		215	0.060	0.092	11 - 16 - 23	24	101	15.1	23.0	3.4 - 4.9 - 6.9	41	37	16	23	17	-	
		265	0.092	0.140	14 - 18 - 25	29	125	22.9	34.9	4.2 - 5.4 - 7.7	44	41	21	28	24	12	
		315	0.130	0.198	16 - 20 - 28	33	149	32.3	49.4	4.8 - 5.9 - 8.4	47	45	26	33	29	20	
	5'	415	0.225	0.344	18 - 22 - 32	40	196	56.1	85.7	5.6 - 6.8 - 9.6	51	51	33	40	37	31	
		125	0.017	0.028	4 - 9 - 17	-	59	4.2	6.9	1.2 - 2.6 - 5.3	31	20	-	-	-	-	
		245	0.064	0.106	11 - 17 - 24	24	116	16.0	26.3	3.4 - 5.2 - 7.4	40	35	-	20	15	-	
305		0.100	0.164	14 - 19 - 27	29	144	24.9	40.8	4.3 - 5.8 - 8.3	43	40	16	26	21	-		
3/4" Slot Width 10" Oval Inlet	2'	365	0.143	0.235	17 - 21 - 30	33	172	35.6	58.5	5.1 - 6.4 - 9.0	46	44	21	31	27	16	
		485	0.252	0.415	20 - 24 - 34	40	229	62.9	103.2	6.0 - 7.4 - 10.4	50	50	28	38	35	28	
		100	0.028	0.032	10 - 16 - 33	14	47	7.0	7.9	3.1 - 5.0 - 10.0	40	35	28	21	15	-	
		170	0.081	0.091	19 - 28 - 44	27	80	20.2	22.8	5.7 - 8.5 - 13.5	48	47	42	35	31	23	
		205	0.118	0.133	23 - 34 - 49	31	97	29.3	33.1	6.8 - 10.3 - 14.8	50	51	47	40	37	31	
	4'	240	0.161	0.182	26 - 37 - 53	35	113	40.2	45.4	8.0 - 11.3 - 16.0	53	55	51	44	42	37	
		310	0.269	0.304	34 - 42 - 60	41	146	67.0	75.7	10.3 - 12.8 - 18.2	56	60	58	51	49	48	
		130	0.016	0.023	6 - 10 - 18	-	61	4.1	5.6	1.8 - 3.1 - 5.4	34	26	-	-	-	-	
		240	0.056	0.077	12 - 17 - 24	24	113	13.9	19.1	3.8 - 5.2 - 7.3	43	39	23	26	21	-	
	5'	295	0.084	0.116	15 - 19 - 27	29	139	21.0	28.9	4.6 - 5.7 - 8.1	46	44	29	31	27	17	
		350	0.119	0.163	17 - 21 - 29	33	165	29.6	40.7	5.1 - 6.3 - 8.8	48	48	33	36	32	24	
		460	0.205	0.282	19 - 24 - 33	40	217	51.1	70.2	5.9 - 7.2 - 10.1	52	54	40	43	40	35	
150		0.017	0.025	6 - 10 - 19	-	71	4.3	6.3	1.7 - 3.2 - 5.8	33	24	-	-	-	-		
3/4" Slot Width 12" Oval Inlet	4'	280	0.059	0.088	13 - 18 - 26	24	132	14.8	21.9	3.9 - 5.6 - 7.9	42	38	18	24	19	-	
		345	0.090	0.133	16 - 20 - 29	29	163	22.5	33.2	4.9 - 6.2 - 8.8	45	42	24	29	25	14	
		410	0.128	0.188	18 - 22 - 31	34	193	31.7	46.9	5.5 - 6.8 - 9.6	47	46	28	34	30	21	
		540	0.221	0.327	21 - 26 - 36	40	255	55.1	81.4	6.3 - 7.8 - 11.0	51	52	36	41	39	33	
		160	0.019	0.022	8 - 12 - 20	-	76	4.6	5.5	2.5 - 3.8 - 6.0	37	30	20	15	-	-	
	5'	290	0.061	0.072	15 - 19 - 26	25	137	15.2	18.0	4.6 - 5.7 - 8.1	46	43	35	31	26	16	
		355	0.092	0.109	17 - 21 - 29	29	168	22.8	27.0	5.1 - 6.3 - 8.9	48	48	40	36	33	25	
		420	0.128	0.152	18 - 23 - 32	33	198	31.9	37.9	5.6 - 6.9 - 9.7	51	52	45	40	38	32	
		550	0.220	0.261	21 - 26 - 36	40	260	54.8	64.9	6.4 - 7.8 - 11.1	54	58	52	48	46	43	
	5'	180	0.017	0.021	8 - 12 - 21	-	85	4.1	5.2	2.5 - 3.8 - 6.3	36	28	14	12	-	-	
		340	0.059	0.075	16 - 20 - 29	25	160	14.8	18.7	4.8 - 6.2 - 8.7	45	42	30	29	25	13	
		420	0.091	0.114	18 - 23 - 32	30	198	22.6	28.5	5.6 - 6.9 - 9.7	48	47	36	34	31	22	
500		0.129	0.162	20 - 25 - 35	34	236	32.0	40.4	6.1 - 7.5 - 10.6	50	51	40	39	36	30		
660	0.224	0.283	23 - 28 - 40	41	311	55.8	70.4	7.0 - 8.6 - 12.1	54	57	48	47	45	41			

NOTE: See notes on page F1-26.

PTBA Performance Data: Horizontal Throw

IP/METRIC DATA: PTBA, 3/4" SLOT WIDTH, 4-SLOT, 1-WAY (NO DAMPER)

PLENUM SLOT DIFFUSERS

	Linear Length	IP Data				NC	Metric Data				Octave Band, dB						
		Air Flow	Pressure		1-Way Throw		Air Flow	Pressure		1-Way Throw	2	3	4	5	6	7	
			Ps	Pt				L/s	Pa								Pa
		CFM	"WG	"WG	ft		L/s	Pa	Pa	m	2	3	4	5	6	7	
3/4" Slot Width	2'	65	0.011	0.018	2 - 4 - 16	-	31	2.6	4.5	0.6 - 1.3 - 5.0	30	19	-	-	-	-	
		125	0.039	0.067	7 - 16 - 31	24	59	9.7	16.7	2.1 - 4.8 - 9.6	39	34	-	19	13	-	
		155	0.060	0.103	11 - 19 - 39	29	73	15.0	25.6	3.3 - 5.9 - 11.8	42	39	13	25	20	-	
		185	0.086	0.147	15 - 23 - 46	33	87	21.3	36.5	4.7 - 7.1 - 14.0	45	42	18	29	25	14	
	245	0.150	0.257	21 - 31 - 53	40	116	37.4	64.1	6.2 - 9.4 - 16.2	49	49	25	37	34	26		
	4'	115	0.022	0.046	2 - 5 - 14	12	54	5.5	11.3	0.6 - 1.4 - 4.1	29	17	-	-	-	-	
		205	0.070	0.145	7 - 12 - 22	25	97	17.3	36.0	2.0 - 3.7 - 6.8	37	29	-	14	-	-	
		250	0.104	0.215	10 - 15 - 25	30	118	25.8	53.6	3.0 - 4.5 - 7.5	39	34	-	19	13	-	
		295	0.144	0.300	12 - 17 - 27	34	139	35.9	74.6	3.5 - 5.3 - 8.1	42	37	-	23	18	-	
	6' Oval Inlet	385	0.246	0.510	15 - 22 - 31	40	182	61.1	127.1	4.6 - 6.6 - 9.3	45	43	-	30	26	16	
		125	0.024	0.052	2 - 4 - 13	-	59	5.9	12.8	0.5 - 1.2 - 4.0	27	14	-	-	-	-	
		235	0.083	0.182	6 - 12 - 24	25	111	20.8	45.3	1.9 - 3.8 - 7.2	36	28	-	11	-	-	
290		0.127	0.277	10 - 15 - 26	30	137	31.6	69.0	2.9 - 4.7 - 8.1	38	32	-	17	11	-		
5'	345	0.180	0.392	12 - 18 - 29	34	163	44.7	97.7	3.7 - 5.6 - 8.8	41	36	-	22	16	-		
	455	0.312	0.682	16 - 23 - 33	41	215	77.8	169.9	4.9 - 7.1 - 10.1	45	42	-	29	25	14		
	8" Slot Width	2'	90	0.012	0.018	4 - 8 - 23	12	42	3.0	4.4	1.1 - 2.5 - 6.9	35	27	-	-	-	-
			160	0.038	0.055	12 - 20 - 40	26	76	9.4	13.8	3.5 - 6.1 - 12.2	43	39	20	26	21	-
195			0.056	0.082	16 - 25 - 47	31	92	13.9	20.5	5.0 - 7.5 - 14.4	46	44	26	31	27	16	
230			0.078	0.114	19 - 29 - 51	35	109	19.4	28.5	5.9 - 8.8 - 15.6	48	47	30	35	32	23	
300		0.132	0.194	25 - 38 - 59	41	142	33.0	48.4	7.6 - 11.5 - 17.9	52	53	37	42	40	34		
4'		140	0.016	0.030	3 - 7 - 17	12	66	4.0	7.4	0.9 - 2.1 - 5.0	31	21	-	-	-	-	
		240	0.048	0.087	9 - 14 - 24	25	113	11.9	21.8	2.8 - 4.3 - 7.3	39	33	-	18	12	-	
		290	0.070	0.128	11 - 17 - 26	29	137	17.4	31.8	3.5 - 5.2 - 8.1	42	37	-	23	18	-	
		340	0.096	0.176	13 - 20 - 29	33	160	23.9	43.7	4.1 - 6.1 - 8.7	44	41	12	27	23	11	
6' Oval Inlet		440	0.161	0.294	17 - 23 - 33	39	208	40.0	73.2	5.3 - 7.0 - 9.9	47	46	19	34	30	21	
		160	0.019	0.036	3 - 7 - 17	12	76	4.6	9.0	0.9 - 2.0 - 5.2	30	19	-	-	-	-	
		280	0.057	0.111	9 - 15 - 26	25	132	14.2	27.6	2.7 - 4.5 - 7.9	38	31	-	16	-	-	
	340	0.084	0.164	12 - 18 - 29	30	160	20.9	40.7	3.7 - 5.5 - 8.7	41	36	-	21	16	-		
5'	400	0.116	0.226	14 - 21 - 31	34	189	28.9	56.4	4.3 - 6.4 - 9.5	43	39	-	26	21	-		
	520	0.196	0.383	18 - 25 - 35	40	245	48.9	95.3	5.6 - 7.6 - 10.8	47	45	15	33	29	19		
	10" Slot Width	2'	100	0.011	0.015	4 - 10 - 25	12	47	2.8	3.7	1.4 - 3.1 - 7.6	36	29	13	13	-	-
			180	0.036	0.048	15 - 23 - 45	26	85	9.1	12.0	4.4 - 6.9 - 13.8	45	42	28	29	24	13
220			0.054	0.072	18 - 28 - 50	31	104	13.5	17.9	5.6 - 8.4 - 15.3	47	46	33	34	30	21	
260			0.076	0.100	22 - 33 - 55	35	123	18.9	25.0	6.6 - 9.9 - 16.6	50	50	38	38	35	28	
340		0.130	0.172	28 - 43 - 63	41	160	32.3	42.7	8.7 - 13.0 - 19.0	53	56	45	46	44	40		
4'		150	0.012	0.021	4 - 8 - 18	11	71	3.1	5.1	1.1 - 2.4 - 5.4	32	23	-	-	-	-	
		270	0.040	0.067	11 - 16 - 26	25	127	10.0	16.6	3.2 - 4.9 - 7.8	41	36	11	21	16	-	
		330	0.060	0.099	13 - 20 - 28	30	156	14.9	24.8	4.0 - 5.9 - 8.6	43	40	16	26	22	-	
		390	0.084	0.139	15 - 22 - 31	34	184	20.8	34.6	4.7 - 6.6 - 9.3	46	44	20	31	27	16	
6' Oval Inlet		510	0.143	0.237	20 - 25 - 35	40	241	35.6	59.1	6.1 - 7.6 - 10.7	49	50	28	38	35	28	
		175	0.014	0.025	3 - 8 - 19	11	83	3.6	6.3	1.1 - 2.4 - 5.6	31	21	-	-	-	-	
		315	0.046	0.082	11 - 17 - 28	25	149	11.5	20.5	3.4 - 5.1 - 8.4	40	34	-	19	14	-	
	385	0.069	0.123	14 - 20 - 31	30	182	17.2	30.6	4.1 - 6.2 - 9.3	42	38	11	25	20	-		
5'	455	0.096	0.171	16 - 23 - 33	34	215	24.0	42.7	4.9 - 7.1 - 10.1	45	42	16	29	25	14		
	595	0.165	0.293	21 - 27 - 38	40	281	41.1	73.0	6.4 - 8.2 - 11.5	48	48	23	36	33	25		
	12" Slot Width	4'	190	0.012	0.017	6 - 11 - 21	13	90	3.0	4.2	1.7 - 3.4 - 6.5	36	28	-	12	-	-
			340	0.038	0.054	13 - 20 - 29	26	160	9.5	13.3	4.1 - 6.1 - 8.7	44	41	24	27	23	11
415			0.057	0.080	16 - 22 - 32	31	196	14.1	19.9	5.0 - 6.8 - 9.6	47	45	29	32	29	19	
490			0.079	0.111	19 - 24 - 34	35	231	19.6	27.7	5.9 - 7.4 - 10.5	49	49	33	37	34	26	
640		0.135	0.190	23 - 28 - 39	41	302	33.5	47.3	6.9 - 8.5 - 12.0	53	55	40	44	42	37		
6' Oval Inlet		210	0.011	0.017	5 - 11 - 22	12	99	2.9	4.3	1.5 - 3.4 - 6.8	34	25	-	-	-	-	
		370	0.036	0.054	13 - 20 - 30	25	175	8.9	13.5	4.0 - 6.0 - 9.1	42	38	17	23	18	-	
		450	0.053	0.080	16 - 23 - 33	30	212	13.1	19.9	4.8 - 7.1 - 10.0	45	42	22	29	24	13	
		530	0.073	0.111	19 - 25 - 36	33	250	18.2	27.6	5.7 - 7.7 - 10.9	47	45	26	33	29	20	
5'		690	0.124	0.188	24 - 29 - 41	40	326	30.9	46.8	7.2 - 8.8 - 12.4	51	51	33	40	37	31	

NOTE: See notes on page F1-26.

PTBA

© KRUEGER 2012

PTBA Performance Data: Horizontal Throw

IP/METRIC DATA: PTBA, 1" SLOT WIDTH, 1-SLOT, 1-WAY (NO DAMPER)

	Linear Length	IP Data				NC	Metric Data				Octave Band, dB						
		Air Flow	Pressure		1-Way Throw		Air Flow	Pressure		1-Way Throw	2	3	4	5	6	7	
			CFM	"WG				"WG	ft								L/s
1" Slot Width	2'	25	0.009	0.010	1 - 3 - 11	-	12	2.2	2.5	0.4 - 1.0 - 3.3	49	32	22	24	-	-	
		55	0.043	0.048	7 - 12 - 24	24	26	10.7	12.0	2.1 - 3.6 - 7.3	55	48	40	41	32	24	
		70	0.069	0.078	10 - 15 - 28	30	33	17.3	19.5	3.1 - 4.6 - 8.6	56	52	46	46	42	34	
		85	0.102	0.115	12 - 19 - 31	34	40	25.5	28.7	3.8 - 5.6 - 9.5	58	56	51	50	49	42	
		115	0.187	0.211	17 - 25 - 36	41	54	46.7	52.6	5.1 - 7.6 - 11.1	60	62	58	57	61	54	
	6" Oval Inlet	4'	50	0.012	0.017	2 - 5 - 10	11	24	3.0	4.1	0.6 - 1.4 - 3.1	53	43	31	31	24	21
			90	0.039	0.054	6 - 9 - 15	25	42	9.8	13.4	1.9 - 2.8 - 4.5	57	55	45	44	47	45
			110	0.059	0.080	8 - 11 - 16	30	52	14.6	20.0	2.3 - 3.4 - 5.0	59	59	50	48	54	53
			130	0.082	0.112	9 - 13 - 18	34	61	20.4	28.0	2.7 - 3.8 - 5.4	60	62	54	52	61	59
		170	0.140	0.192	12 - 14 - 20	40	80	35.0	47.8	3.5 - 4.4 - 6.2	62	67	60	58	71	70	
	5'	70	0.019	0.027	3 - 6 - 13	16	33	4.6	6.8	0.9 - 2.0 - 3.9	55	49	37	36	36	35	
		110	0.046	0.067	7 - 10 - 16	26	52	11.4	16.8	2.0 - 3.1 - 5.0	58	58	48	46	53	53	
		130	0.064	0.094	8 - 12 - 18	30	61	15.9	23.5	2.4 - 3.6 - 5.4	59	61	52	49	59	60	
		150	0.085	0.125	9 - 13 - 19	34	71	21.2	31.2	2.8 - 4.1 - 5.8	61	64	55	52	65	65	
		190	0.137	0.201	12 - 15 - 21	39	90	34.1	50.1	3.5 - 4.6 - 6.5	62	69	61	57	74	75	
8" Oval Inlet	2'	35	0.021	0.022	3 - 6 - 15	-	17	5.3	5.5	0.9 - 2.0 - 4.6	49	31	23	26	-	-	
		65	0.073	0.076	9 - 14 - 27	24	31	18.1	18.9	2.9 - 4.3 - 8.3	53	43	38	40	24	12	
		80	0.110	0.115	12 - 17 - 30	29	38	27.5	28.6	3.5 - 5.3 - 9.2	55	47	43	44	32	20	
		95	0.156	0.162	14 - 21 - 33	33	45	38.8	40.3	4.2 - 6.3 - 10.1	56	51	47	48	38	27	
		125	0.270	0.280	18 - 27 - 38	39	59	67.1	69.8	5.5 - 8.2 - 11.5	58	56	53	54	49	38	
	4'	70	0.018	0.021	4 - 7 - 13	15	33	4.5	5.3	1.2 - 2.2 - 4.0	53	42	33	34	22	15	
		110	0.045	0.053	8 - 11 - 16	26	52	11.1	13.2	2.3 - 3.4 - 5.0	56	51	43	43	39	33	
		130	0.062	0.074	9 - 13 - 18	30	61	15.5	18.4	2.7 - 3.8 - 5.4	57	54	47	47	46	40	
		150	0.083	0.098	10 - 13 - 19	33	71	20.7	24.5	3.1 - 4.1 - 5.8	58	57	51	50	51	46	
		190	0.133	0.158	12 - 15 - 21	39	90	33.1	39.3	3.8 - 4.6 - 6.5	60	62	56	55	60	55	
	5'	85	0.019	0.024	4 - 8 - 14	16	40	4.7	5.9	1.3 - 2.4 - 4.4	54	45	35	35	28	23	
		135	0.048	0.060	8 - 12 - 18	27	64	11.8	15.0	2.5 - 3.8 - 5.5	57	54	46	45	46	42	
		160	0.067	0.084	10 - 14 - 20	31	76	16.6	21.0	3.0 - 4.2 - 6.0	58	58	50	49	52	48	
		185	0.089	0.113	11 - 15 - 21	35	87	22.2	28.1	3.4 - 4.5 - 6.4	59	61	53	52	58	54	
		235	0.144	0.182	14 - 17 - 24	40	111	35.9	45.4	4.2 - 5.1 - 7.2	61	65	59	57	67	64	
10" Oval Inlet	2'	50	0.068	0.069	6 - 11 - 22	15	24	16.9	17.1	1.8 - 3.3 - 6.6	49	33	27	31	-	-	
		80	0.174	0.176	12 - 17 - 30	26	38	43.2	43.8	3.5 - 5.3 - 9.2	53	42	38	41	21	-	
		95	0.245	0.248	14 - 21 - 33	30	45	60.9	61.8	4.2 - 6.3 - 10.1	54	46	42	45	28	14	
		110	0.328	0.333	16 - 24 - 36	34	52	81.7	82.8	4.9 - 7.3 - 10.8	55	49	46	48	34	20	
		140	0.532	0.539	20 - 28 - 40	39	66	132.4	134.1	6.2 - 8.6 - 12.2	57	53	52	53	43	29	
	4'	90	0.029	0.032	6 - 9 - 15	18	42	7.2	7.9	1.9 - 2.8 - 4.5	53	42	34	36	21	12	
		140	0.070	0.077	10 - 13 - 18	29	66	17.4	19.2	2.9 - 4.0 - 5.6	56	51	45	45	38	30	
		165	0.097	0.107	11 - 14 - 20	33	78	24.2	26.6	3.4 - 4.3 - 6.1	57	54	49	49	45	36	
		190	0.129	0.142	12 - 15 - 21	36	90	32.0	35.3	3.8 - 4.6 - 6.5	58	57	52	52	50	42	
		240	0.205	0.226	14 - 17 - 24	41	113	51.1	56.3	4.2 - 5.2 - 7.3	60	62	57	57	59	51	
	5'	100	0.023	0.027	6 - 9 - 16	17	47	5.7	6.6	1.8 - 2.8 - 4.7	53	43	35	35	24	16	
		150	0.052	0.060	9 - 13 - 19	27	71	12.9	14.9	2.8 - 4.1 - 5.8	56	51	44	44	40	33	
		175	0.070	0.082	11 - 15 - 21	31	83	17.5	20.3	3.3 - 4.4 - 6.3	57	54	48	47	46	39	
		200	0.092	0.106	12 - 16 - 22	34	94	22.9	26.5	3.7 - 4.7 - 6.7	58	57	51	50	51	44	
		250	0.144	0.166	14 - 17 - 25	39	118	35.8	41.4	4.3 - 5.3 - 7.5	60	61	56	55	59	53	
12" Oval Inlet	4'	100	0.049	0.051	7 - 10 - 16	17	47	12.3	12.6	2.1 - 3.1 - 4.7	51	36	30	33	-	-	
		160	0.126	0.130	11 - 14 - 20	28	76	31.5	32.3	3.3 - 4.2 - 6.0	54	45	41	43	28	15	
		190	0.178	0.183	12 - 15 - 21	32	90	44.4	45.6	3.8 - 4.6 - 6.5	55	49	45	47	34	22	
		220	0.239	0.246	13 - 16 - 23	35	104	59.5	61.1	4.0 - 5.0 - 7.0	56	52	49	50	40	28	
		280	0.387	0.398	15 - 18 - 26	41	132	96.4	99.0	4.6 - 5.6 - 7.9	58	57	54	55	49	37	
	5'	110	0.031	0.032	7 - 10 - 16	15	52	7.7	8.1	2.0 - 3.1 - 5.0	51	37	30	32	12	-	
		180	0.082	0.087	11 - 15 - 21	27	85	20.5	21.6	3.3 - 4.5 - 6.3	54	47	42	43	31	20	
		215	0.118	0.124	13 - 16 - 23	31	101	29.3	30.8	4.0 - 4.9 - 6.9	56	50	46	47	38	27	
		250	0.159	0.167	14 - 17 - 25	35	118	39.6	41.7	4.3 - 5.3 - 7.5	57	53	49	50	43	33	
		320	0.261	0.274	16 - 20 - 28	41	151	64.9	68.3	4.9 - 6.0 - 8.5	59	58	55	55	53	43	

NOTE: See notes on page F1-26.

PTBA Performance Data: Horizontal Throw

IP/METRIC DATA: PTBA, 1" SLOT WIDTH, 2-SLOT, 1-WAY (NO DAMPER)

PLENUM SLOT DIFFUSERS

	Linear Length	IP Data				NC	Metric Data				Octave Band, dB						
		Air Flow	Pressure		1-Way Throw		Air Flow	Pressure		1-Way Throw	2	3	4	5	6	7	
			Ps	Pt				Ps	Pt								
		CFM	"WG	"WG	ft		L/s	Pa	Pa	m							
1" Slot Width	2'	60	0.017	0.024	3 - 7 - 18	15	28	4.4	6.0	0.9 - 2.0 - 5.6	54	47	36	35	31	28	
		100	0.049	0.066	8 - 15 - 31	27	47	12.1	16.5	2.5 - 4.7 - 9.4	58	57	48	46	51	49	
		120	0.070	0.096	12 - 18 - 37	32	57	17.4	23.8	3.6 - 5.6 - 11.2	59	60	52	50	58	56	
		140	0.095	0.130	14 - 22 - 40	35	66	23.7	32.4	4.4 - 6.6 - 12.2	60	64	56	53	64	62	
	4'	70	0.012	0.021	1 - 3 - 10	-	33	3.1	5.2	0.4 - 1.0 - 3.1	54	47	32	31	32	35	
		130	0.042	0.072	5 - 9 - 18	23	61	10.5	18.0	1.5 - 2.9 - 5.4	59	59	47	44	56	60	
		160	0.064	0.110	7 - 12 - 20	28	76	15.9	27.3	2.3 - 3.5 - 6.0	60	63	52	49	64	68	
		190	0.090	0.155	9 - 14 - 21	32	90	22.5	38.5	2.8 - 4.2 - 6.5	62	67	56	52	71	75	
	6" Oval Inlet	5'	250	0.156	0.268	12 - 17 - 25	39	118	38.9	66.7	3.7 - 5.3 - 7.5	64	72	62	58	81	86
			80	0.014	0.025	1 - 3 - 10	-	38	3.4	6.3	0.4 - 0.9 - 3.2	55	49	33	31	36	41
			150	0.048	0.088	5 - 10 - 19	23	71	12.0	22.0	1.4 - 3.0 - 5.8	59	61	48	45	60	66
			185	0.073	0.134	7 - 12 - 21	28	87	18.2	33.5	2.2 - 3.7 - 6.4	61	66	53	49	68	74
1" Slot Width	2'	75	0.021	0.025	5 - 10 - 23	17	35	5.2	6.1	1.4 - 3.2 - 7.0	53	43	34	35	25	18	
		115	0.049	0.058	11 - 18 - 35	27	54	12.1	14.4	3.3 - 5.4 - 10.8	56	52	45	44	41	35	
		135	0.067	0.080	14 - 21 - 39	31	64	16.7	19.9	4.2 - 6.3 - 12.0	57	55	48	48	47	41	
		155	0.089	0.105	16 - 24 - 42	34	73	22.1	26.2	4.8 - 7.3 - 12.8	58	58	52	51	53	47	
	4'	90	0.012	0.018	2 - 5 - 13	-	42	3.0	4.4	0.7 - 1.6 - 4.0	53	44	32	31	27	26	
		160	0.038	0.055	7 - 12 - 20	24	76	9.4	13.8	2.3 - 3.5 - 6.0	58	56	45	44	49	49	
		195	0.056	0.082	9 - 14 - 22	29	92	13.9	20.5	2.9 - 4.3 - 6.6	59	60	50	48	57	57	
		230	0.078	0.114	11 - 17 - 24	33	109	19.4	28.5	3.4 - 5.1 - 7.2	60	63	54	51	63	63	
	8" Oval Inlet	5'	300	0.132	0.194	15 - 19 - 27	39	142	33.0	48.4	4.4 - 5.8 - 8.2	62	68	60	57	73	74
			100	0.012	0.019	2 - 5 - 13	-	47	3.0	4.7	0.6 - 1.4 - 3.9	54	46	32	31	30	30
			190	0.043	0.068	8 - 12 - 21	25	90	10.7	16.9	2.3 - 3.7 - 6.5	58	58	47	45	54	56
			235	0.066	0.104	10 - 15 - 24	30	111	16.3	25.8	3.1 - 4.6 - 7.2	60	63	52	49	62	64
1" Slot Width	2'	90	0.029	0.032	7 - 14 - 28	18	42	7.2	7.9	2.0 - 4.2 - 8.4	53	42	34	36	21	12	
		140	0.070	0.077	14 - 22 - 40	29	66	17.4	19.2	4.4 - 6.6 - 12.2	56	51	45	45	38	30	
		165	0.097	0.107	17 - 25 - 44	33	78	24.2	26.6	5.1 - 7.7 - 13.3	57	54	49	49	45	36	
		190	0.129	0.142	20 - 29 - 47	36	90	32.0	35.3	5.9 - 8.9 - 14.2	58	57	52	52	50	42	
	4'	240	0.205	0.226	25 - 37 - 53	41	113	51.1	56.3	7.5 - 11.2 - 16.0	60	62	57	57	59	51	
		100	0.011	0.015	3 - 7 - 15	-	47	2.8	3.7	0.9 - 2.0 - 4.4	52	41	30	30	21	17	
		180	0.036	0.048	9 - 13 - 21	24	85	9.1	12.0	2.6 - 4.0 - 6.3	57	53	44	43	43	40	
		220	0.054	0.072	11 - 16 - 23	29	104	13.5	17.9	3.2 - 4.9 - 7.0	58	57	49	47	51	48	
	10" Oval Inlet	5'	260	0.076	0.100	13 - 18 - 25	33	123	18.9	25.0	3.8 - 5.4 - 7.6	59	60	52	51	58	55
			340	0.130	0.172	16 - 20 - 29	39	160	32.3	42.7	5.0 - 6.2 - 8.7	61	66	59	56	68	66
			110	0.010	0.015	3 - 6 - 14	-	52	2.6	3.7	0.8 - 1.7 - 4.3	53	42	30	30	23	21
			210	0.038	0.054	9 - 14 - 23	24	99	9.4	13.4	2.8 - 4.1 - 6.9	57	55	45	44	48	47
1" Slot Width	4'	260	0.058	0.083	11 - 17 - 25	29	123	14.5	20.6	3.4 - 5.1 - 7.6	59	59	50	48	56	55	
		310	0.083	0.117	13 - 19 - 27	33	146	20.6	29.2	4.1 - 5.9 - 8.3	60	63	54	52	63	62	
		410	0.145	0.205	18 - 22 - 31	40	193	36.0	51.2	5.4 - 6.8 - 9.6	62	69	61	58	74	74	
		150	0.020	0.023	7 - 11 - 19	16	71	5.0	5.8	2.0 - 3.3 - 5.8	52	41	33	34	21	13	
	12" Oval Inlet	5'	250	0.056	0.064	12 - 17 - 25	28	118	13.9	16.0	3.7 - 5.3 - 7.5	56	52	45	45	40	33
			300	0.080	0.093	15 - 19 - 27	32	142	20.0	23.1	4.4 - 5.8 - 8.2	57	55	49	49	47	41
			350	0.110	0.126	17 - 21 - 29	36	165	27.3	31.4	5.1 - 6.3 - 8.8	59	58	53	52	53	47
			450	0.181	0.208	19 - 23 - 33	42	212	45.1	51.9	5.8 - 7.1 - 10.0	60	63	59	57	63	57
	1" Slot Width	5'	170	0.018	0.022	6 - 11 - 20	15	80	4.4	5.4	1.8 - 3.4 - 6.2	53	43	33	34	24	18
			280	0.048	0.059	12 - 18 - 26	27	132	12.0	14.6	3.7 - 5.5 - 7.9	57	53	45	45	43	38
			335	0.069	0.084	14 - 20 - 28	31	158	17.1	20.9	4.4 - 6.1 - 8.7	58	57	49	49	50	45
			390	0.093	0.114	17 - 22 - 31	35	184	23.2	28.3	5.1 - 6.6 - 9.3	59	60	53	52	56	51
1" Slot Width	5'	500	0.153	0.187	20 - 25 - 35	41	236	38.2	46.6	6.1 - 7.5 - 10.6	61	65	59	57	66	61	

NOTE: See notes on page F1-26.

PTBA

© KRUEGER 2012

PTBA Performance Data: Horizontal Throw

IP/METRIC DATA: PTBA, 1" SLOT WIDTH, 3-SLOT, 1-WAY (NO DAMPER)

	Linear Length	IP Data				NC	Metric Data				Octave Band, dB						
		Air Flow	Pressure		1-Way Throw		Air Flow	Pressure		1-Way Throw	2	3	4	5	6	7	
			CFM	"WG				"WG	ft								L/s
1" Slot Width 6" Oval Inlet	2'	75	0.018	0.028	3 - 6 - 19	14	35	4.4	7.0	0.8 - 1.7 - 5.7	55	49	37	36	37	38	
		125	0.050	0.078	7 - 16 - 31	26	59	12.4	19.3	2.1 - 4.8 - 9.6	59	60	49	46	57	58	
		150	0.071	0.112	10 - 19 - 38	31	71	17.8	27.8	3.1 - 5.7 - 11.5	60	63	53	50	64	66	
		175	0.097	0.152	14 - 22 - 44	34	83	24.2	37.8	4.2 - 6.7 - 13.4	61	66	57	54	70	72	
		225	0.161	0.251	19 - 28 - 51	40	106	40.0	62.5	5.7 - 8.6 - 15.5	63	71	63	59	79	82	
	4'	100	0.019	0.037	2 - 4 - 12	-	47	4.8	9.2	0.5 - 1.1 - 3.6	56	52	37	34	43	50	
		180	0.062	0.120	5 - 11 - 21	25	85	15.5	29.9	1.6 - 3.2 - 6.3	60	64	51	47	66	73	
		220	0.093	0.179	8 - 13 - 23	29	104	23.1	44.6	2.3 - 4.0 - 7.0	62	68	55	51	74	81	
		260	0.130	0.250	10 - 15 - 25	33	123	32.3	62.4	3.1 - 4.7 - 7.6	63	72	59	54	80	88	
		340	0.222	0.428	13 - 20 - 29	40	160	55.2	106.6	4.1 - 6.1 - 8.7	65	77	66	60	91	99	
	5'	120	0.025	0.050	2 - 4 - 13	12	57	6.1	12.5	0.5 - 1.1 - 3.9	57	55	39	35	49	57	
		220	0.083	0.169	6 - 12 - 23	26	104	20.6	42.1	1.7 - 3.5 - 7.0	62	67	53	48	72	82	
270		0.124	0.255	8 - 14 - 26	31	127	31.0	63.4	2.5 - 4.4 - 7.8	63	71	58	53	80	90		
320		0.175	0.358	11 - 17 - 28	35	151	43.5	89.1	3.4 - 5.2 - 8.5	64	75	62	56	87	97		
420		0.301	0.616	15 - 22 - 32	41	198	75.0	153.5	4.5 - 6.8 - 9.7	66	80	68	62	97	108		
1" Slot Width 8" Oval Inlet	2'	80	0.013	0.018	3 - 6 - 20	12	38	3.3	4.4	0.9 - 2.0 - 6.1	53	43	32	32	24	21	
		140	0.040	0.054	9 - 18 - 35	25	66	10.0	13.3	2.7 - 5.3 - 10.7	57	54	45	44	46	43	
		170	0.059	0.079	13 - 21 - 43	30	80	14.7	19.7	3.9 - 6.5 - 13.0	58	58	50	48	53	51	
		200	0.082	0.109	17 - 25 - 48	34	94	20.4	27.2	5.1 - 7.6 - 14.6	60	61	54	52	60	58	
		260	0.138	0.185	22 - 33 - 55	40	123	34.4	46.0	6.6 - 9.9 - 16.6	62	67	60	57	70	68	
	4'	125	0.016	0.027	2 - 6 - 15	12	59	4.0	6.6	0.8 - 1.7 - 4.5	55	49	36	34	37	39	
		225	0.052	0.086	8 - 13 - 23	26	106	12.8	21.5	2.4 - 4.1 - 7.1	59	61	49	46	60	63	
		275	0.077	0.129	11 - 16 - 26	31	130	19.2	32.2	3.3 - 5.0 - 7.8	61	65	54	51	67	71	
		325	0.108	0.180	13 - 19 - 28	35	153	26.8	44.9	3.9 - 5.9 - 8.5	62	68	58	54	74	78	
		425	0.184	0.309	17 - 23 - 32	41	201	45.8	76.8	5.1 - 6.9 - 9.7	64	74	64	60	84	88	
	5'	150	0.019	0.035	3 - 6 - 16	13	71	4.8	8.7	0.8 - 1.8 - 4.8	56	52	38	35	42	47	
		260	0.059	0.105	8 - 14 - 25	26	123	14.6	26.2	2.3 - 4.2 - 7.6	60	63	51	47	64	69	
315		0.086	0.154	11 - 17 - 28	30	149	21.4	38.4	3.4 - 5.1 - 8.4	62	67	55	51	71	77		
370		0.118	0.213	13 - 20 - 30	34	175	29.5	53.0	4.0 - 6.0 - 9.1	63	70	59	55	77	83		
480		0.199	0.358	17 - 24 - 34	40	227	49.6	89.2	5.2 - 7.3 - 10.4	65	75	65	60	87	94		
1" Slot Width 10" Oval Inlet	2'	100	0.017	0.021	4 - 10 - 25	15	47	4.2	5.1	1.4 - 3.1 - 7.6	53	42	33	33	23	16	
		160	0.043	0.053	12 - 20 - 40	26	76	10.8	13.1	3.5 - 6.1 - 12.2	56	52	44	44	41	35	
		190	0.061	0.074	16 - 24 - 47	30	90	15.2	18.5	4.8 - 7.3 - 14.2	57	55	48	47	47	42	
		220	0.082	0.099	18 - 28 - 50	33	104	20.4	24.7	5.6 - 8.4 - 15.3	58	58	51	50	53	48	
		280	0.133	0.161	23 - 35 - 57	39	132	33.0	40.1	7.1 - 10.7 - 17.3	60	63	57	55	62	58	
	4'	150	0.016	0.024	4 - 8 - 18	14	71	4.0	6.0	1.1 - 2.4 - 5.4	55	48	35	34	34	33	
		250	0.044	0.067	10 - 15 - 25	26	118	11.1	16.7	3.0 - 4.5 - 7.5	58	58	48	45	53	54	
		300	0.064	0.097	12 - 18 - 27	30	142	15.9	24.1	3.6 - 5.4 - 8.2	60	62	52	49	60	61	
		350	0.087	0.132	14 - 21 - 29	34	165	21.7	32.7	4.2 - 6.3 - 8.8	61	65	55	53	66	67	
		450	0.144	0.217	18 - 23 - 33	40	212	35.9	54.1	5.4 - 7.1 - 10.0	63	70	61	58	76	78	
	5'	170	0.017	0.027	3 - 7 - 18	13	80	4.2	6.8	1.0 - 2.2 - 5.5	55	49	36	35	37	39	
		290	0.049	0.079	10 - 15 - 26	26	137	12.2	19.7	2.9 - 4.7 - 8.1	59	60	49	46	58	60	
350		0.071	0.116	12 - 19 - 29	30	165	17.7	28.8	3.8 - 5.6 - 8.8	60	64	53	50	65	68		
410		0.098	0.159	14 - 22 - 31	34	193	24.3	39.5	4.4 - 6.6 - 9.6	62	67	57	54	71	74		
530		0.163	0.265	19 - 25 - 36	40	250	40.6	66.0	5.7 - 7.7 - 10.9	63	72	63	59	81	84		
1" Slot Width 12" Oval Inlet	4'	200	0.019	0.024	6 - 12 - 22	16	94	4.7	6.0	1.9 - 3.6 - 6.7	54	46	36	36	29	25	
		320	0.048	0.062	13 - 19 - 28	27	151	12.0	15.4	3.8 - 5.8 - 8.5	57	55	47	46	47	44	
		380	0.068	0.087	15 - 21 - 30	31	179	16.9	21.7	4.6 - 6.5 - 9.2	59	58	51	49	54	50	
		440	0.091	0.117	17 - 23 - 33	35	208	22.6	29.1	5.3 - 7.0 - 9.9	60	61	54	52	59	56	
		560	0.147	0.190	21 - 26 - 37	41	264	36.7	47.2	6.5 - 7.9 - 11.2	61	66	60	58	69	66	
	5'	220	0.017	0.024	6 - 12 - 23	15	104	4.3	5.9	1.7 - 3.5 - 7.0	54	47	36	35	31	29	
		350	0.043	0.060	12 - 19 - 29	26	165	10.8	14.9	3.8 - 5.6 - 8.8	58	56	46	45	49	47	
		415	0.061	0.084	15 - 22 - 32	30	196	15.2	21.0	4.5 - 6.7 - 9.6	59	59	51	49	56	54	
		480	0.082	0.113	17 - 24 - 34	33	227	20.3	28.0	5.2 - 7.3 - 10.4	60	62	54	52	61	60	
		610	0.132	0.182	22 - 27 - 38	39	288	32.8	45.3	6.6 - 8.3 - 11.7	62	67	60	57	71	70	

NOTE: See notes on page F1-26.

PTBA Performance Data: Horizontal Throw

IP/METRIC DATA: PTBA, 1" SLOT WIDTH, 4-SLOT, 1-WAY (NO DAMPER)

PLENUM SLOT DIFFUSERS

	Linear Length	IP Data				NC	Metric Data				Octave Band, dB						
		Air Flow	Pressure		1-Way Throw		Air Flow	Pressure		1-Way Throw	2	3	4	5	6	7	
			Ps	Pt				Ps	Pt								
		CFM	"WG	"WG	ft		L/s	Pa	Pa	m							
1" Slot Width	2'	70	0.012	0.021	1 - 3 - 13	-	33	3.1	5.2	0.4 - 1.0 - 3.9	54	47	32	31	32	35	
		140	0.049	0.084	6 - 13 - 30	25	66	12.2	20.9	1.7 - 3.9 - 9.3	59	61	49	46	59	63	
		175	0.077	0.131	9 - 19 - 38	30	83	19.1	32.7	2.7 - 5.8 - 11.6	61	65	54	51	68	72	
		210	0.110	0.189	13 - 23 - 46	34	99	27.5	47.1	3.9 - 6.9 - 13.9	62	69	58	54	75	79	
	280	0.196	0.336	20 - 30 - 57	41	132	48.8	83.7	6.2 - 9.3 - 17.3	64	75	65	61	86	91		
	4'	115	0.022	0.046	1 - 3 - 12	-	54	5.5	11.3	0.4 - 0.9 - 3.6	57	54	37	34	47	56	
		215	0.077	0.159	5 - 11 - 22	24	101	19.1	39.6	1.5 - 3.3 - 6.7	61	67	52	47	71	81	
		265	0.116	0.242	7 - 14 - 25	29	125	29.0	60.2	2.2 - 4.1 - 7.7	63	71	57	52	79	89	
		315	0.164	0.342	10 - 16 - 28	33	149	40.9	85.1	3.1 - 4.9 - 8.4	64	74	61	55	86	96	
	6" Oval Inlet	415	0.285	0.593	14 - 21 - 32	40	196	71.1	147.7	4.3 - 6.5 - 9.6	66	80	68	61	96	107	
		5'	125	0.024	0.052	1 - 3 - 10	-	59	5.9	12.8	0.4 - 0.8 - 3.2	57	55	37	33	49	59
			235	0.083	0.182	4 - 9 - 22	23	111	20.8	45.3	1.2 - 2.8 - 6.6	62	68	52	47	73	84
			290	0.127	0.277	6 - 13 - 26	28	137	31.6	69.0	1.9 - 4.0 - 8.1	63	72	57	51	81	93
	345		0.180	0.392	9 - 16 - 29	32	163	44.7	97.7	2.7 - 4.8 - 8.8	64	75	61	55	88	100	
	455	0.312	0.682	14 - 21 - 33	39	215	77.8	169.9	4.2 - 6.3 - 10.1	66	81	67	61	98	111		
	1" Slot Width	2'	90	0.012	0.018	2 - 5 - 20	-	42	3.0	4.4	0.7 - 1.6 - 6.0	53	44	32	31	27	26
170			0.043	0.062	8 - 19 - 37	25	80	10.6	15.6	2.6 - 5.6 - 11.3	58	57	47	45	51	51	
210			0.065	0.095	13 - 23 - 46	30	99	16.2	23.7	3.9 - 6.9 - 13.9	60	61	52	49	60	60	
250			0.092	0.135	18 - 27 - 54	35	118	22.9	33.6	5.5 - 8.3 - 16.3	61	65	56	53	66	67	
330		0.160	0.235	24 - 36 - 62	41	156	39.9	58.6	7.3 - 10.9 - 18.7	63	70	62	59	77	78		
4'		140	0.016	0.030	2 - 5 - 14	-	66	4.0	7.4	0.6 - 1.4 - 4.4	55	50	35	33	39	44	
		260	0.056	0.103	7 - 13 - 25	25	123	14.0	25.6	2.1 - 4.1 - 7.6	60	63	50	46	63	69	
		320	0.085	0.156	11 - 16 - 28	30	151	21.1	38.7	3.2 - 5.0 - 8.5	62	67	55	51	71	77	
		380	0.120	0.219	13 - 20 - 30	34	179	29.8	54.6	4.0 - 5.9 - 9.2	63	70	59	55	78	84	
8" Oval Inlet		500	0.207	0.380	17 - 25 - 35	40	236	51.6	94.5	5.2 - 7.5 - 10.6	65	76	65	60	88	95	
		5'	160	0.019	0.036	2 - 4 - 15	-	76	4.6	9.0	0.6 - 1.3 - 4.5	56	52	36	34	43	49
			300	0.065	0.127	7 - 14 - 27	25	142	16.3	31.7	2.0 - 4.2 - 8.2	61	65	51	47	67	75
			370	0.099	0.194	10 - 17 - 30	30	175	24.7	48.2	3.1 - 5.2 - 9.1	62	69	56	51	75	83
440			0.141	0.274	13 - 20 - 33	34	208	35.0	68.2	4.1 - 6.1 - 9.9	63	72	60	55	82	90	
580		0.244	0.476	18 - 26 - 37	40	274	60.8	118.5	5.4 - 8.1 - 11.4	66	78	67	61	93	101		
1" Slot Width		2'	100	0.011	0.015	3 - 7 - 22	-	47	2.8	3.7	0.9 - 2.0 - 6.6	52	41	30	30	21	17
	190		0.041	0.054	11 - 21 - 41	25	90	10.1	13.3	3.2 - 6.3 - 12.6	57	54	45	44	46	43	
	235		0.062	0.082	16 - 26 - 51	30	111	15.4	20.4	4.9 - 7.8 - 15.6	59	58	50	49	54	51	
	280		0.088	0.116	20 - 30 - 57	34	132	21.9	29.0	6.2 - 9.3 - 17.3	60	62	54	52	60	58	
	370	0.154	0.203	27 - 40 - 65	41	175	38.3	50.6	8.2 - 12.2 - 19.8	62	67	61	58	71	69		
	4'	160	0.014	0.023	3 - 6 - 16	-	76	3.5	5.8	0.8 - 1.8 - 5.0	55	48	34	33	34	36	
		300	0.050	0.082	9 - 15 - 27	26	142	12.3	20.5	2.8 - 4.7 - 8.2	59	61	49	46	58	61	
		370	0.075	0.125	13 - 19 - 30	31	175	18.8	31.1	3.8 - 5.8 - 9.1	61	65	54	51	67	70	
		440	0.107	0.177	15 - 23 - 33	35	208	26.5	44.0	4.6 - 6.9 - 9.9	62	68	58	54	73	77	
	10" Oval Inlet	580	0.185	0.307	20 - 26 - 37	41	274	46.1	76.5	6.0 - 8.1 - 11.4	64	74	65	60	84	88	
		5'	180	0.015	0.027	2 - 5 - 17	-	85	3.8	6.7	0.7 - 1.6 - 5.0	55	49	35	33	37	41
			340	0.054	0.096	9 - 16 - 29	25	160	13.4	23.8	2.6 - 4.7 - 8.7	60	62	50	46	62	67
			420	0.082	0.146	13 - 19 - 32	30	198	20.5	36.4	3.9 - 5.9 - 9.7	61	66	55	51	70	75
	500		0.116	0.207	15 - 23 - 35	34	236	29.0	51.6	4.7 - 7.0 - 10.6	63	70	59	55	77	82	
	660	0.203	0.361	20 - 28 - 40	41	311	50.5	89.8	6.1 - 8.6 - 12.1	65	75	65	61	87	93		
	1" Slot Width	4'	200	0.013	0.019	4 - 9 - 21	12	94	3.3	4.6	1.3 - 2.8 - 6.2	53	44	33	32	27	25
360			0.043	0.060	12 - 18 - 30	26	170	10.6	15.0	3.7 - 5.6 - 9.0	58	56	47	45	50	49	
440			0.064	0.090	15 - 23 - 33	30	208	15.8	22.3	4.6 - 6.9 - 9.9	59	60	51	49	57	57	
520			0.089	0.125	18 - 25 - 35	34	245	22.1	31.2	5.4 - 7.6 - 10.8	60	64	55	53	64	63	
680		0.152	0.214	23 - 29 - 41	41	321	37.8	53.4	7.1 - 8.7 - 12.3	62	69	62	59	74	74		
12" Oval Inlet		5'	225	0.013	0.020	4 - 8 - 21	11	106	3.3	5.0	1.1 - 2.6 - 6.3	54	46	33	32	30	30
			405	0.043	0.065	12 - 19 - 31	25	191	10.6	16.1	3.7 - 5.7 - 9.5	58	58	47	45	53	53
			495	0.064	0.097	15 - 23 - 35	30	234	15.9	24.1	4.6 - 6.9 - 10.5	60	62	52	49	61	61
			585	0.089	0.135	18 - 27 - 38	34	276	22.2	33.7	5.4 - 8.1 - 11.4	61	65	56	53	67	68
765		0.152	0.231	23 - 30 - 43	40	361	37.9	57.6	7.1 - 9.2 - 13.1	63	70	62	59	77	79		

NOTE: See notes on page F1-26.

PTBA

© KRUEGER 2012

PTBA Suggested Specification & Configuration
1. SERIES: (XXXX)

 PTBA - Plenum Slot Steel Diffuser with
 'Ice Tong' Pattern Controllers

2. INSULATION: (X)

 N - No Insulation
 Y - Insulation

3. SLOT LENGTH: (XX)

24", 36", 48", or 60"

4. NUMBER OF SLOTS: (X)

1, 2, 3, or 4

5. PLENUM INLET SIZE: (XX)

 5" Round *
 6", 8", 10", or 12" Oval **

6. SLOT WIDTH: (XXX)

 75 - 3/4"
 100 - 1"

7. FINISH: (XX)

 35 - Black Face and Tees
 50 - White Exposed Surfaces, Black Pattern
 Controller, White Optional Tees
 55 - Black Face with Optional White Tees

8. DAMPER: (XX)

 00 - No Damper
 QD - Quadrant

9. FRAME STYLE / T-BAR LOCATION: (XXX)

 23A - All Tees by Others
 23B - Center Tee Only
 23C - Tees on Both Sides
 23D - Center and Outside Tees

10. MOUNTING TYPE: (XXXX)

 00 - No Mounting
 PF - Plaster Frame ***
 CN - Center Notch
 MTT1 - Mounting Tab Opposite Inlet
 MTT2 - Mounting Tabs on Both Sides

* 5" Round inlet not available on 48" or 60" units.

** 12" Inlet only available in 48" and 60" lengths.

 *** Mounting type PF only available with Frame 23A
 (1 slot only) and Frame 23B.

PTBA

The plenum slot supply diffuser shall be Krueger model PTBA constructed of 24 gage galvanized steel with factory drawn inlet to prevent air leakage. The PTBA shall have 3/4" or 1" slot width with 1, 2, 3 or 4 slots. The PTBA shall have a two-piece pattern controller with 180° adjustability on the discharge air pattern and volume control adjustment accessible from the face of the diffuser. Any units 36" or longer will have a center divider to provide two independent adjustment sections per slot allowing for 2-way discharge from the same slot.

Optional plaster frame is available for installation into hard ceilings.

Optional 1/4" thick, 2 lb. density internal insulation is available.

Optional quadrant damper for field attachment to the neck is available.

PERFORMANCE

The manufacturer shall provide published (printed or electronic) performance data for the diffuser. Performance data shall include 2 - 7 octave band sound power levels. The diffuser shall be tested in accordance to the data standards at the time of product introduction or ANSI/ASHRAE Standard 70.

FINISH

The standard finish shall have a black face and pattern controllers with optional white T-Bars.