



# TEXAS PARTS & AFTERMARKET 2020

Austin

Dallas

Houston

San Antonio



[www.hts.com/texasparts](http://www.hts.com/texasparts)

01

Introduction

Why HTS? 3  
Manufacturers 4 - 5

02

Parts & Aftermarket

Service Tools 6 - 8  
Compressors 9  
Hoses & Accessories 10  
Thermostats 11 - 13  
Electrical 14  
Mini-Split & VRV Accessories 15 - 16  
Motors 16 - 20  
Refrigerants 21 - 22  
Cleaners & Chemicals 23  
Belts 24  
Fan Coil Parts 25  
Valves & Actuators 26 - 28  
Air Quality 29 - 35

03

OEM Parts

AAF 33 - 34  
Dynamic 35  
Daikin 36, 38 - 39, 44 - 49  
Danfoss 37  
Omega 40  
Eubank 41  
Applied Comfort 42 - 43  
Neptronic 50 - 51  
Armstrong 52  
Twin City Fans 53

04

Replacement Equipment

Variable Frequency Drives 36 - 37  
Fan Coils 38  
Heat Pumps 39 - 41  
PTACs & Self-Contained Units 42 - 43  
Mini-Splits & VRV 44 - 49  
Humidification 50 - 52  
Commercial & Industrial Fans 53  
Heating 54 - 55  
Air Curtains 56 - 57  
Fans 58 - 59

05

General

Line Sheet 60 - 62



Delivering Real Success®

WE KNOW PARTS

The HTS Texas Parts Department offers outstanding customer service and support for the dozens of manufacturers and hundreds of parts we proudly represent. We are your problem solvers; we will find any part from any manufacturer that your equipment requires.

As the official Daikin Applied OEM Parts Distributor, HTS offers **competitive pricing and the best trained staff** who are ready to provide timely solutions for our customers’ maintenance and repair needs. In addition to accessing hard-to-find parts, we maintain **fully-stocked parts showrooms** in Austin, Dallas, Houston, and San Antonio.

OUR PROMISE

As the parts department, we are committed to the individual success of all those involved in a project’s HVAC system selection, design, purchase, installation, and maintenance.

WE MAKE IT EASY

Our goal is to help reduce your equipment downtime by providing you with replacement and warranty parts in a quick and timely manner. *Order your parts by calling our direct lines, visiting one of our locations, or by emailing [parts\\_texas@hts.com](mailto:parts_texas@hts.com)*

STORE LOCATIONS & CONTACT

Austin

2251 Picadilly Dr., B260  
Round Rock, TX 78664

P 512.251.0014

Dallas

1625 Wallace Dr., #120  
Carrollton, TX 75006

P 469.263.1000

Houston

3444 Yale St.  
Houston, TX 77018

P 832.328.1010

San Antonio

127 W. Nakoma St.  
San Antonio, TX 78216

P 210.340.2533

STORE HOURS

Monday - Friday  
7 - 5 p.m.



WE REPRESENT TOP HVAC MANUFACTURERS



HTS Texas Parts is the **LARGEST** supplier of Daikin Applied OEM parts in the US Central region.



VISIT US AT [WWW.HTS.COM/TEXASPARTS](http://WWW.HTS.COM/TEXASPARTS)







AV760 Wireless Full Range Vacuum Gauge

- Accurately measures the entire evacuation process from atmosphere to 1 micron and detects large leaks
- Delivers NIST-traceable accuracy, elite technology, and advanced app functionality for remote, real-time readings
- Advanced analysis and diagnosis

ION P/T Gauges

- Wireless, digital stub gauges
- High-accuracy (+/-0.5% accuracy, ASME Grade 2A) for high resolutions measurements, compound 29inHg to 500 psi
- Equipped with advanced digital manifold functionality and leading Bluetooth technology, designed for effortless jobs on con evolving, complex, high-efficiency systems

MegaFlow Valve Core Removal Tool

- Only valve core removal tool in the market that is vacuum-certified to hold a 20 micron vacuum
- Designed for easy removal of restrictive access valve cores to achieve full flow during recovery and evacuation

MegaFlow Hoses

- Vacuum-certified, ultra-flexible, and ultra-reliable
- Ideal for deep system evacuation
- Rated for use with R410A and all common refrigerants
- Available in custom lengths and fitting combinations, with lengths up to 1200 ft.

MegaFlow Basics Kit

- Vacuum-rated to 20 microns
- Helps to remove restrictive valve cores and perform AC/R system evacuations up to 10x faster
- Opens up over 90% on internal diameter of access port
- Includes vacuum certified 6 ft., 3/8" FL to 1/4" FL, 1/2" diameter MegaFlow Hose and MegaFlow Valve Core Removal Tool

MegaFlow Speed Kit

- Vacuum-rated to 20 microns
- Compatible with all common refrigerants including R410A
- Includes MegaFlow Manifold, MegaFlow Hoses, MegaFlow Valve Core Removal Tools, and Appion backpack/tool bag



Service Tools

\*Availability varies by location, please call your local store.



4 Piece Heavy-Duty Nut Driver Set

- Through-handle, full-hollow shaft for torquing hex nuts onto threaded rod of any length
- Wrench-assist for additional torque
- Rare Earth magnetic tip holds nut in place while fastening
- Heavy duty handles and shafts exceed torque performance of regular nut drivers
- Includes 1/4", 5/16", 3/8" and 7/16" hex sizes



Mini Cushion-Grip Screwdriver Set

- Includes one Phillips-tip, one keystone-tip, and two cabinet-tip screwdrivers
- Tip-Ident® quickly identifies the type of screwdriver and tip orientation
- Precision tips for an exact fit and rigorous applications
- Premium chrome-plated shafts for corrosion resistance



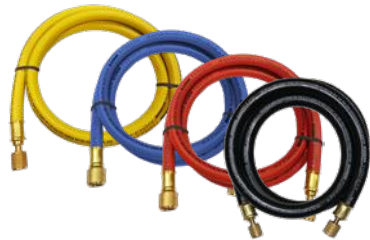
Tradesman Pro™ Backpack

- 39 pockets for tons of tool storage
- Hard, molded front pocket protects safety glasses
- Front zipper pocket for small parts and tools
- Taller bag and interior pockets allow for long screwdrivers
- Fully molded bottom protects from the elements
- 1680d ballistic weave for durability
- Shoulder straps with extra padding and handles for easy carrying



600A AC Clamp Meter with Temperature

- 600V AC Current, 600V AC Voltage, 600V DC Voltage
- Measures temperature, frequency, and capacitance
- 40MΩ Resistance Range, 100kHz Frequency, 100μF Capacitance
- -4°F to 1832°F Temperature Range (-20°C to 1000°C)





Adjustable Temperature Probe Strap

- Compatible with P51 and ManTooth-product families
- Thermistor technology
- Temperature sensing range: -40°F to 266°F (-40°C to 130°C)
- Maximum pipe diameter: 6" (152mm)
- Adjustable elastic strap for secure measurement location
- Wire length: 6 ft (1.8m)
- Made in USA



YJIT Vacuum Pump 5 CFM

- Deep ultimate vacuum, pulls to 25 microns or better
- Quick flow rate
- Wide range of applications
- Lightweight, durable aluminum housing
- Thermal protector in motor to guarantee pump runs steadily and safely for long periods
- High torque motor design for easy start-up and efficient operation
- 1/4" and 3/8" SAE flare inlet connections allow for flexibility of hose fittings/sizes
- 3/4" garden hose exhaust fitting with removable cap for venting
- Oversized 3/8" oil drain for faster oil changes
- Vacuum pump oil included
- One year warranty



9" FlexFlow™ and Low Loss Adapter Hoses

- Flexible hose between valve and fitting for handling in tight areas
- Operating temperature -20°F to 180°F (-28.8°C to 82.2°C)
- 4000 psi (276 bar) minimum burst and 800 psi (55 bar) maximum working pressure
- Minimum bend radius: 8" (203 mm)
- UL recognized assemblies (File SA9737) (Valves SA10088)
- Made in the USA

Light Bar



- Sic brightness light levels
- 5000 lumen output
- Up to 48 hours of runtime
- IP67-rated and chemical-resistant
- Rechargeable battery
- Shock-absorbing construction



BIG ASS FANS®



Compressors

\*Availability varies by location, please call your local store.

Reman Semi-Hermetic Compressors



Copeland, DISCUS

4D, 6D, 8D, Three Phase

- Industry leader
- Proven technology reliable
- Improved efficiency
- ISO 9001/2000 and 14001 certification
- Standard one-year warranty with optional five-year warranty
- R-22, R-407C applications

Hermetic Reciprocating Compressors



Copeland, C Series

CR Model, Single & Three Phase

- 18,000 to 61,300 Btu/H
- Compact size
- Proven field reliability
- Quiet operation



Daikin, Hermetic

Bristol H22J Model, Single & Three Phase

- High efficiency
- Low sound
- Solder suction fittings: 90° elbow
- Solder discharge fittings: straight



Tecumseh



Tecumseh, A Series

AG Model, Single & Three Phase

- 46,000 to 73,000 Btu/H
- Robust reciprocating mechanism
- Proven field reliability





# Hoses & Accessories

\*Availability varies by location, please call your local store.



CUSTOM SIZES  
AVAILABLE

## Fire Retardant Hoses

- Fixed end x Swivel end with JIC MNPT adapter
- Fire rated to meet local building codes
- Inner tube is EPTF - white santoprene with UL-94 VO fire rating
- Outer braid is 302/304 stainless steel wire
- Temperature range -40°F to 212°F (-40°C to 100°C)
- **Application:** for use with water source heat pumps and fan coils
- Water supply and condensate applications



## Fire Retardant Hose Kits

- Supply line has combination ball valve & Y-strainer with full port shut-off
- Return line has combination flow controller & ball valve with two ports
- Fire rated to meet local building codes
- Inner tube is EPTF - white santoprene with UL-94 VO fire rating
- Outer braid is 302/304 stainless steel wire
- **Application:** for use with water source heat pumps and fan coils
- Water supply and condensate applications



## Push to Connect (PTC) Assemblies

- 1/2" (5/8" OD) & 3/4" (7/8" OD) CTS tube connection
- Tube conforms to ASSE 1061 & IAPMO listed
- Working pressure up to 200 psi
- Temperature range 0°F to 200°F (-17.78°C to 93.33°C)
- Inner tube is EPTF - white santoprene with UL-94 VO fire rating
- Approved tubing: ASTM B88 tube types K, L, M drawn copper tube and annealed copper tube, CPVC water tube per ASTM D2846-2846M-90
- Standard hose lengths: 12", 18", 24", 36" and custom: 6" minimum with 1" increments
- Minimum bend radius: 2.5"



# Thermostats

\*Availability varies by location, please call your local store.



**Honeywell** T Series thermostats have the features you need for comfort and energy savings. All feature Honeywell's engineering excellence that's delivered comfort and efficiency for more than 100 years, and all are backed by a 5-year warranty for peace of mind.



## T6 Pro Z-Wave

- Large, modern and intuitive touchscreen display
- Easy wiring with the UWP mounting system
- Seamless homeowner hand-off, letting you move on to your next project



## T6 Pro Hydronic

- Can be used to control air and floor temperature or both
- Flexible A/AF/F control capabilities



## Lyric T6 Pro Wi-Fi

- ENERGY STAR Certified
- Wi-Fi touchscreen
- Optional dual fuel and ventilation
- Flexible scheduling or geofence technology



## T4 Pro

- Push-button programmable
- Flexible scheduling



## T6 Pro

- Push-button programmable
- Optional dual fuel
- Flexible scheduling



## T1 Pro

- Non-programmable
- Available in both 1H/1C (heat and cool models) and 1H or 1C only model



# PRO



### T601-2, Single Stage

- 1 heat, 1 cool
- Non-programmable
- Battery or hardwire
- 2 sq. inch display



### T705, Single Stage

- 1 heat, 1 cool
- 7 day or 5/1/1 programmable
- Battery or hardwire
- 4 sq. inch display



### T725, Heat Pump/Conventional

- 1 heat, 1 cool conventional
- 2 heat, 1 cool heat pump
- 7 day, 5/1/1, or non-programmable
- Battery or hardwire
- 4 sq. inch display



### T605-2, Single Stage

- 1 heat, 1 cool
- 7 day or 5/1/1 programmable
- Battery or hardwire
- 2 sq. inch display



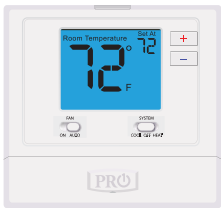
### T715, Multi-Stage Gas

- 2 heat, 2 cool
- 7 day, 5/1/1, or non-programmable
- Battery or hardwire
- 4 sq. inch display



### T755, Universal

- Up to 2 heat, 2 cool conventional
- Up to 3 heat, 2 cool heap pump
- 7 day, 5/1/1, or non-programmable
- Battery or hardwire
- 4 sq. inch display



### T701, Single Stage

- 1 heat, 1 cool
- Non-programmable
- Battery or hardwire
- 4 sq. inch display



### T721, Heat Pump/Conventional

- 1 heat, 1 cool conventional
- 2 heat, 1 cool heat pump
- Non-programmable
- Battery or hardwire
- 4 sq. inch display



### T905, Single Stage

- 1 heat, 1 cool
- 7 day, 5/1/1, or non-programmable
- Battery or hardwire
- 13 sq. inch display



### T955, Universal

- Residential/light commercial
- Up to 2 heat, 2 cool conventional
- Up to 3 heat, 2 cool heat pump
- 7 day, 5/1/1, or non-programmable
- Battery or hardwire
- 13 sq. inch display



### Z260W, Wireless Damper Module

- Measures discharge air temperature for safe and efficient zone control
- Accessory for Z955W and RZ251W
- Hard wired, mounts in duct above heat exchanger



### W150W, Wireless Repeater

- Extend the wireless signal range; 24V AC (18-30V)
- Hardwire



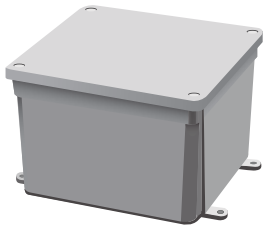
### T150, Thermostat Guard

- Universal guard, horizontal or vertical mount
- Includes 2 keys
- Protects all Pro1 thermostats and most modern controls
- Replacement keys (T150k) available and sold separately



### WW160W, Wireless Wire™

- Replace any 24 VAC wire
- Up to 3 heat, 2 cool heat pump system



### E219, Weather Resistant Junction Box

- Used to weather protect the WW160W
- UL listed with a NEMA 6P rating per Section 314, expectation of the National Electric Code
- Manufactured from PVC or PPO thermoplastic molding compounds and featuring foam-in place gasket lids

### Z2K955WDA, Wireless 2-Zoning Kit

- 1 Master Zoning Control
- 1 Equipment Module
- 1 Controller for Zone 2
- 2 Damper Modules
- 1 Discharge Air Sensor



# Electrical

\*Availability varies by location, please call your local store.

**WiringPRO®**  
MAKE THE CONNECTION

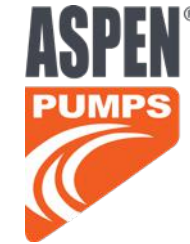
WiringPro prides itself in providing OEM quality North American made products that meet and/or exceed OEM's stringent engineering specifications. These products are CSA and UL approved.



- Electrical interconnect devices accommodating wire sizes from 22 AWG through 4/0 AWG
- Heavy duty copper lugs and connectors that vary in size from 6 AWG to 250 MCM
- High temperature terminals and special adapters for extreme or sensitive environments
- Nylon cable ties for tying or bundling wires and cables or securing devices of any kind
- Specialty items for routing, identifying and insulating cables and protecting wires from abrasion
- Heat shrinkable tubing that provides insulation, sealing, strain relief and mechanical protection
- New generation of heat shrinkable terminals with sealing technology to protect against environmental problems
- Broad range of application tools and accessories for quick and reliable installations

# Mini-Split & VRF Accessories

\*Availability varies by location, please call your local store.



## VRF/VRV Stand Range

Versatile ground mount frame system, and with the option Extender Kits, it is compatible with all leading VRF/VRV units.

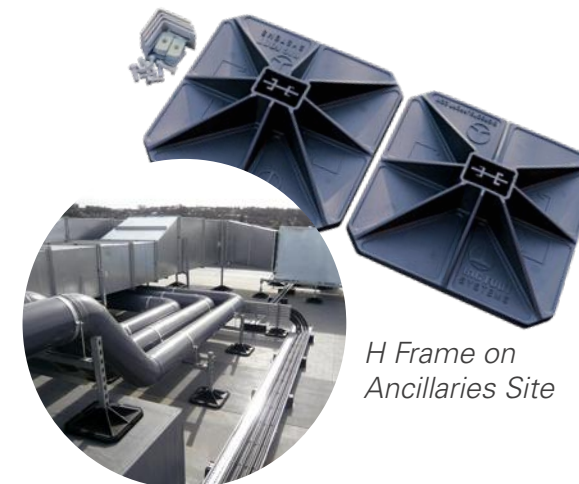
- 200mm (8") feet
- Available in 3 lengths
- Optional Extender Kits
- Support individual or multiple VRF/VRV units
- Adjustable slotted channel cross bar, to suit industry standard fixings
- Clamp kits
- Quick to assemble

## H Frame Set

Economical support solution for pipe or duct. These accept a range of strut, and by fabricating the frame on-site, they are the flexible choice.

- 305mm (12") feet
- Interchangeable with three strut\* sizes: 21 x 41 x 1.5mm (13/16 x 15/8 x 1/16") 40 x 38 x 1.9mm (19/16 x 11/2 x 1/16") 41 x 41 x 1.5mm (15/8 x 15/8 x 1/16")
- Versatile application
- Adhered rubber mats provide additional roof protection
- Boxed for convenience

\*Please note: Strut is not included in set, and is shown as example.



Mini Split Kit 600mm

## Fix-it Foot & High Bloc

Simple, durable, and comes in a variety of sizes. Extra clearance can be created using a High Bloc which fits underneath.

- Quick and simple install
- Aluminum channel securely anchored in top for easy fixing of services
- Wide range of height and length options available
- Durable recycled rubber reduces vibration and adds stability





DiversiTech® Corporation is North America's largest manufacturer of equipment pads and a leading manufacturer and supplier of components and related products for multiple industries.



### CP-22 Low Profile

- Condensate pump, 22ft. lift, low profile, 120V
- 4 3/8" tall
- Shorter reservoir holds 1/3 gallon
- Suitable for use with condensate up to 160°F



### ClearVue™ Mini

- Ductless system pump
- Very quiet operation
- Designed for ductless system installations
- Includes iQ Technology™ and Floatless Sensor™

## Motors

### Wagner Motors - Multiple Horsepower Direct Drive Furnace Blower Motors

The Multi-Horsepower motors are specially designed to cover a range of applications. The direct drive furnace blower motors range from 1/2 to 1/6 in both 115 and 230 volts and 3/4 to 1/5 in both 115 and 230 volts all at 1075rpm. These motors feature reversing plugs, extended through bolts 36 inch leads and are designed for 370 volt capacitors. Installs with all 48 mounting brackets.



### WG840463

DDFB, 115V, 1075/4 Speed, 1/2-7.0 HP-FLA, 1/3-6.7 HP-FLA, 1/4-4.4 HP-FLA, 1/5-3.2 HP-FLA, 1/6-2.4 HP-FLA



### WG840464

DDFB, 208-230V, 1075/4 Speed, 1/2-3.9 HP-FLA, 1/3-3.6 HP-FLA, 1/4-2.5 HP-FLA, 1/5-1.8 HP-FLA, 1/6-1.3 HP-FLA



### WG840466

DDFB, 115V, 1075/4 Speed, 3/4-8.1 HP-FLA, 1/2-6.6 HP-FLA, 1/3-4.6 HP-FLA, 1/4-3.8 HP-FLA, 1/5-3.1 HP-FLA



### WG840467

DDFB, 208-230V, 1075/4 Speed, 3/4-3.8 HP-FLA, 1/2-3.7 HP-FLA, 1/3-2.5 HP-FLA, 1/4-1.8 HP-FLA, 1/5-1.7 HP-FLA

## MINI-SPLIT & VRV ACCESSORIES // MOTORS

### Wagner Motors - Multiple Horsepower Condenser Fan Motors

The Multi-Horsepower motors are specially designed to cover a range of applications. The condenser fan motors range from 1/2 to 1/5, 1/3 to 1/6 both at 1075 RPM, and 1/3 to 1/6 at 825 RPM. These motors feature reversing plugs, extended through bolts 36 inch leads and are designed for 370 volt capacitors. Installs with all 48 frame mounting brackets.



### WG840465

CF, 208-230V, 1075/2 Speed, 1/3-2.8 HP-FLA, 1/4-2.0 HP-FLA, 1/5-1.7 HP-FLA, 1/6-1.5 HP-FLA



### WG840468

CF, 208-230V, 1075/2 Speed, 1/2-3.0 HP-FLA, 1/3-2.5 HP-FLA, 1/4-2.0 HP-FLA, 1/5-1.3 HP-FLA



### WG840469

CF, 208-230V, 825/2 Speed, 1/3-2.1 HP-FLA, 1/4-1.7 HP-FLA, 1/5-1.5 HP-FLA, 1/6-1.2 HP-FLA

### Genteq Motors



### Condenser Fan Motors

- Standard 48 frame sizes
- Single speed with reversible rotation
- Designed for 370V capacitors with mounting holes in shell for capacitor bracket
- 26" motor lead and 6" shaft extension
- Automatic overload protection



### Direct Drive Furnace Blower Motors

- Designed with 3 speeds at 1075 RPM
- Available for both 115V or 208-230V applications
- Reversible rotation
- Mounting holes for capacitor mounting bracket
- 4" shaft extension
- Automatic overload protection

### High Temperature Condenser Fan Motors

- Standard 48 frame mounting brackets
- Electrically reversible with quick connects for easy capacitor installations
- Automatic thermal overload protection with class B insulation
- 48" leads, extended through bolts on both ends, and drain holes in both end shields
- Designed for 158°F (70°C) ambient operation



## Genteq Motors (continued)



### Multiple HP Condenser Fan Motors

- 1/2 - 1/8hp at 1075 or 825 RPM with 1 or 2 speeds
- Available in 208-230V applications
- Reverse rotation, extended clamp screws, and resilient rings with Rheem mounting holes
- Water slinger on shaft
- Automatic thermal overload protection

### Multiple HP Furnace Blower Motors

- 1/2 to 1/6hp and 3/4 to 1/5hp at 1075 RPM with 4 speeds
- Available in both 115V and 208-230V applications
- Energy saver plus designed
- Reverse rotation, extended clamp screws, and resilient rings with Rheem mounting holes
- Installs with all 48 mounting brackets

## Evergreen Motors



### Multiple HP Condenser Fan Motors

- 1/2 - 1/8hp at 1075 or 825 RPM with 1 or 2 speeds
- Available in 208-230V applications
- Reverse rotation, extended clamp screws, and resilient rings with Rheem mounting holes
- Water slinger on shaft
- Automatic thermal overload protection

### Multiple HP Furnace Blower Motors

- 1/2 to 1/6hp and 3/4 to 1/5hp at 1075 RPM with 4 speeds
- Available in both 115V and 208-230V applications
- Energy saver plus designed
- Reverse rotation, extended clamp screws, and resilient rings with Rheem mounting holes
- Installs with all 48 mounting brackets

### EM ECM Motors

- Designed to replace direct-drive blower motors in residential and light commercial indoor furnaces, air handlers, and package systems with standard ECM motor
- Can be used to retrofit PSC motors in commercial building series VAV boxes and packaged heat pump systems
- NOT intended to replace ECM constant airflow products



## Evergreen Motors (continued)



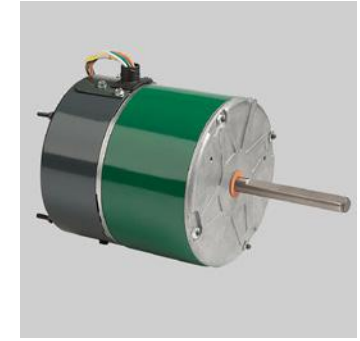
### IM ECM Motors

- Designed to replace an existing PSC (permanent split capacitor), direct drive, and indoor blower motor
- Constructed with more than 20 years of proven ECM technology and reliability



### PF ECM Motors

- Drop-in replacement or proactive upgrade for pedestal and wall mount fan motors in warehouses, factory floors, amusement parks, institutional parks, and other small applications
- Rated efficiency of up to 82% and 3 operating speeds
- Provides energy savings and reduces operating noise
- Easy for retrofit with power cord, switch, and welded mount
- Includes pull chain for easy speed selection from 1160/970/650 operating speeds



### OM ECM Motors

- This outdoor motor is designed for direct-drive fan propeller applications in residential systems up to 5 tons
- Easily replaces 6 pole (1,100 RPM rated) and 8 pole (850 RPM rated), shaded pole, or PSC motors



### CM ECM Motors

- Made with field-proven, high-efficiency ECM technology
- Flexible control methods to help the installer balance airflow in HVAC systems such as VAV boxes and Packaged HVAC systems
- Designed as direct replacement for OEM Genteq model X13 (Genteq Torque ECM) or as field replacement for existing PSC





Single-Phase Multi-Voltage PSC, Double-Shaft

- Direct drive motor
- Thermally protected, UL recognized, CSA and cUL certified
- **Application:** air moving (furnace fans, air handlers, blowers, air conditioners, exhaust fans, etc.)



Electronically Commutated Motors (ECM),  
Preprogrammed for Unit Ventilators

- Preprogrammed for direct factory replacement
- Select appropriate motor based on unit characteristics
- 20-30% more efficient than traditional PSC motors
- **Application:** air moving (Unit Ventilators and Water Source Heat Pumps)



Premium Efficient, Three-Phase, ODP, with AEGIS  
SGR Protection

- General purpose motor
- Ball bearings; heavy-duty steel or cast-iron frames
- Class F insulated motor with 1.15 service factor or higher that operates within Class B temperature limits at rated horsepower
- **Application:** fans, blowers, machine tools, energy savings where continuous or frequent duty is required



Refrigerants

\*Availability varies by location, please call your local store.



Refrigerant	Capacity (lbs)
R-22	30
R-22	125
R-407C	25
R-410A	25

Authorized Chiller Parts Distributor

HTS Texas Parts is **fully-stocked** with a complete line of quality Daikin parts for your chillers.



MicroTech® II Controls for Rooftop and Self-Contained Units





Cleaners & Chemicals

\*Availability varies by location, please call your local store.

Bluon, Inc. is a fast-growing company with a mission to provide practical solutions for the post R-22 world.

PARTS & AFTERMARKET



TdX 20 (R-458A)

- Average 15% energy savings vs R-22 (up to 25%)
- Virtually identical capacity to R-22 (+/- 3%)
- No oil change required, works with POE & MO
- Operates at lower pressures and temperatures
- Reduces vibration and boosts stability
- ASHRAE & EPA approved, warranty protected

Hydro Balance

Hydro Balance formulates their cleaners with the right amount of active ingredients necessary to get the job done in one application. No heavily diluted products; you're not paying for water, you're paying for high quality cleaner with better results.



Condenser Coil Cleaners 4x Base      Condenser Coil Cleaners Black-Max      Condenser Coil Cleaners Bluedaceous      Condenser Coil Cleaners, Evaporator Coil Cleaners Enviro-Coil



Condenser Coil Cleaners Hydro-Foam      Condenser Coil Cleaners Hydro-Kleen (1 Gallon)      Condenser Coil Cleaners MP3 Cleaner (1 Gallon)      Condenser Coil Cleaners Zip Foam



# Belts

\*Availability varies by location, please call your local store.



**Gates Corporation** is a leading manufacturer of application-specific fluid power and power transmission solutions. Gates is driven to push the boundaries of material science to engineer products that continuously exceed expectations.



# Fan Coil Parts

\*Availability varies by location, please call your local store.



Water valves, water regulating valves, flared fittings, hose adapters, valve bodies, valve actuators, as well as freeze stats, and aqua stats **are always in stock.**



## Aqua Stats

- 3 wire thermostat switch



## Aqua Stats

- 2 wire thermostat switch



## Actuators

- 24 volt
- 120 volt



## 799 Motor

- OEM aftermarket options
- ECM upgrades



## Valve Actuator

- 24 volt
- 120 volt



## Valve Body

- 2 way
- 3 way

# Valves & Actuators

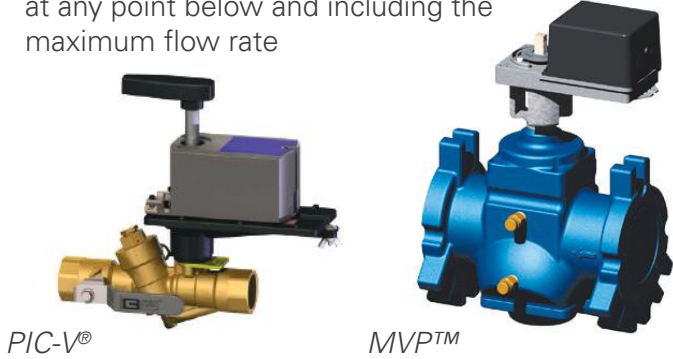
\*Availability varies by location, please call your local store.



Griswold Controls pioneered automatic flow control with the introduction of the stainless steel flow cartridge. To this day, their innovation, quality, and reliability continue to set them apart from the competition.

### Pressure Independent Control Valves

- PIC-V (1/2" - 3") and spacesaver PIC-V (1/2" - 2")
- MVP (2-1/2" - 6") valves are designed to maintain the required flow rate in a system regardless of pressure fluctuations
- Accurately maintains flow control regardless of pressure fluctuations, providing balancing at any point below and including the maximum flow rate



### Combination Control Valves

- PIC-V (1/2" - 3") and spacesaver PIC-V (1/2" - 2")
- Automizer combination control valves provide the performance of an actuated control valve and a flow limiting valve in one compact package



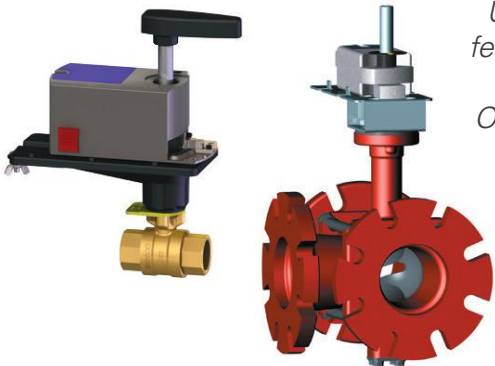
### Coil Piping Packages & Hose Kits

- 1/2" - 8"
- Pre-plumbed solutions for specific piping needs, saving time, labor and money, while offering the added convenience of hassle-free product distribution at the job site



### Actuated Control Valves

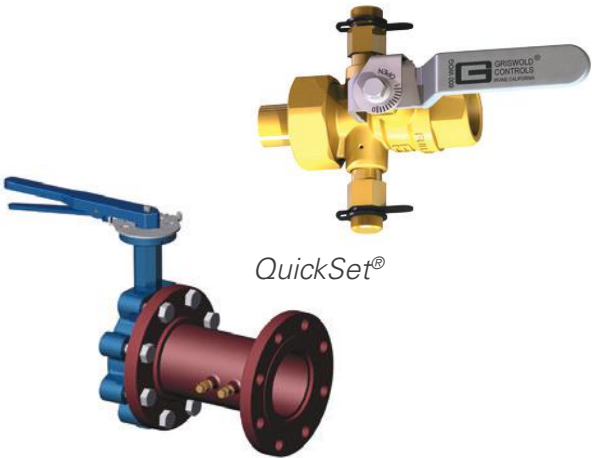
- Unimizer: 3-Way (4" - 6")
- Unimizer (1/2" - 6") 2 & 3 Way actuated control valves provide perfect temperature control anywhere actuated ball valves or globe valves are used



Unimizer® featuring the Patented Optimizer™

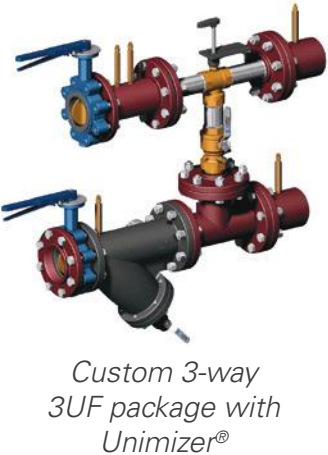
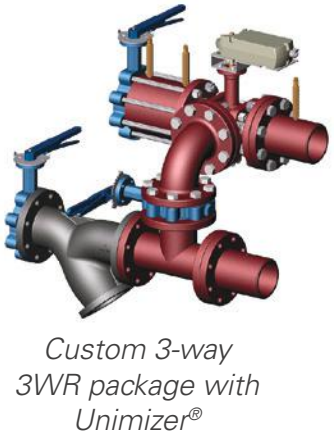
### Manual Balancing Valves

- Flanged end quickset and metering station (2-1/2" - 20") with handle butterfly valve
- QuickSet (1/2" - 18") manual balance valves provide a simple solution for a proportional or static balances system with constant speed pumping



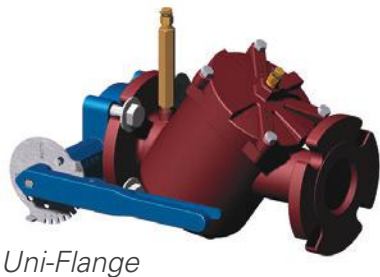
### Custom Coil Piping Packages

- Line sizes from 2 1/2" through 8"
- Available with flange, weld, or grooves end connections and can include balancing valves, strainers, butterfly valves, control valves and reducers
- Variety of options can include the addition of hoses and extension kits



### Automatic Flow Control Valves

- Wafer Class 150 & Class 300 (2-1/2" - 24")
- Uni-Flange Valve (2-1/2" - 3")
- Isolator "Y" (1/2" - 2")
- Isolator "R" (1/2" - 3")
- K-Valves (1/2" - 3")
- Maintains constant flow rate regardless of pressure fluctuations in the system, and include an isolation ball valve along with the flow control cartridge







**Belimo** is the global market leader in the development, production and marketing of actuator solutions for controlling heating, ventilation and air conditioning systems. Actuators, control valves and sensors make up the company's core business.

PARTS & AFTERMARKET



**AFR Valve Actuator**

*Spring Return, AC/DC 24 V, On/Off*

- Degree of protection: IP54, NEMA 2, UL Enclosure Type 2
- Manual override: 5 mm hex crank (3/16" allen)
- Power consumption (running): 5 W
- Running time (fail-safe): <20 s
- Running time (motor): <75 s



**LF24-SR US Damper Actuator**

*Spring Return, AC/DC 24 V, Modulating*

- Degree of protection: IP54, NEMA 2
- Power consumption (running): 2.5 W
- vRunning time (fail-safe): <25 s
- Running time (motor): 150s constant, independent of load
- Torque: 35 in-lb [4 Nm]
- Angle of rotation: 95°
- Direction of rotation (fail-safe): Reversible with CW/CCW mounting
- Direction of rotation (motor): Reversible with built-in switch
- Shaft diameter: 3/8" to 1/2" round, centers on 1/2"



**FSAF24A Fire & Smoke Actuator**

*Spring Return, AC/DC 24 V, On/Off*

- Degree of protection: IP40, NEMA 1
- Running time (fail-safe): <15s
- Running time (motor): <25 s
- Torque: [20 Nm]
- Angle of rotation: 95°
- Direction of rotation (fail-safe): Reversible with CW/CCW mounting
- Direction of rotation (motor): Reversible with built-in switch
- Shaft diameter: 1/2" to 1.05" round, centers on 3/4" with insert, 1.05" without insert



**01UT-5A Outside Temperature Sensor**

- Degree of protection: IP65, NEMA 4X
- Measuring range temperature: -30°F to 120°F (-35°C to 50°C)
- Output signal: Pt100

Air Quality

\*Availability varies by location, please call your local store.



**Global Plasma Solutions** provides patent pending, cold plasma air purification technology that can be used as a substitute for UV lights and carbon products, but without the replacement costs and maintenance associated with those systems.



**GPS-DM48-AC**

- Carbon fiber needlepoint, bi-polar ionization generator
- 4,800 CFM nominal capacity
- Designed for duct mounting or AHU mounting
- Weatherproof housing made from all composite material
- Includes an integral display, self-cleaning test button, preprogrammed cleaning cycle, and integral alarm contacts



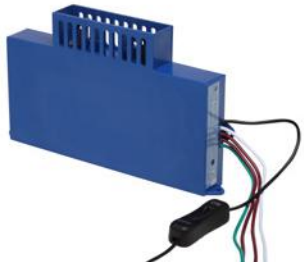
**GPS-FC-3-BAS**

- Carbon fiber brush, needlepoint, bi-polar ionization generator
- 3,200 CFM or up to 8 tons nominal capacity
- Great for mounting in fan coils, RTUs, water source heat pumps or any other forced air systems
- Includes an alarm contact for interfacing to a BMS and an integral LED for local operational status
- Operates from 24VAC or 24VDC
- When 110-240VAC input is required an AC to 24VDC power supply can be provided



**GPS-FC**

- Carbon fiber brush, needlepoint, bi-polar ionization generator
- 1,200 CFM or up to 3 tons nominal capacity
- Great for mounting in fan coils, ductless mini-splits, chilled beams (patent pending), water source heat pumps or any other forced air systems with low air flow



**GPS-FC24-AC**

- Carbon fiber needlepoint, bi-polar ionization generator
- 2,400 CFM nominal capacity
- Designed for mounting inside the AHU, on the interior wall, floor or directly to the fan inlet
- Housing is made from all composite material and includes a self-cleaning test button, preprogrammed cleaning cycle, status LED, integral alarm contacts and magnets for ease of mounting
- Ideal solution for ceiling cassette units, PTACs, classrooms, patient rooms and hotels



GPS-FC48-AC

- Carbon fiber needlepoint, bi-polar ionization generator
- 4,800 CFM nominal capacity
- Designed for mounting inside the AHU, on the interior wall, floor or directly to the fan inlet
- Housing is made from all composite material and includes a self-cleaning test button, preprogrammed cleaning cycle, status LED, integral alarm contacts and magnets for ease of mounting
- Ideal solution for classrooms, patient rooms and hotels



GPS-iRIB-18/36

- The first flexible ionization bar in the HVAC industry
- Fits where no other devices can install: the GPS-iRIB-18 is 18" long and the 36 is 36" long and can be mounted on ductless mini-splits, PTACs, ceiling cassettes or any another HVAC system with coils up to 48" long
- Uses "Fold-To-Fit" technology, and the carbon fiber ion emitters are embedded into the flexible ribbon cable
- The cable is made from custom polyamide material, and is resistant to chemicals, has a dielectric strength of 30,000 volts and can withstand temperatures from -200F to +500F
- The full width coil coverage will help prevent mold from growing inside the coil and fan housing



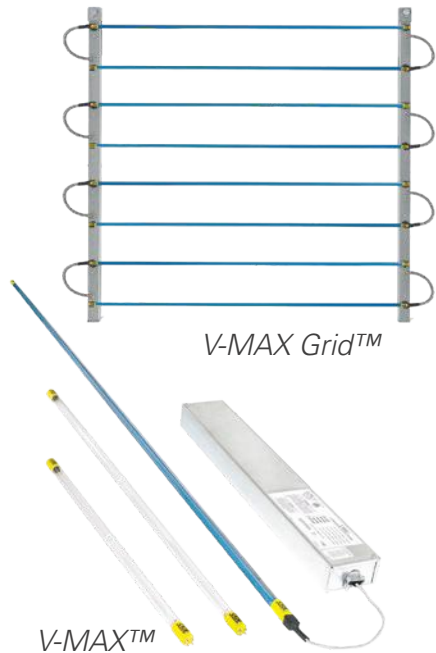
GPS-iBAR

- Bi-polar ionization generator custom designed for any air flow and is constructed from extruded aluminum
- Contains 316 stainless steel ion needles every 3/4" down the length of the bar
- The bar comes in sizes from 8" up to 143" in 3" increments
- Mounted in AHUs, RTUs or installed in ducts with an optional duct mounting kit
- Perfectly suited to mount to cooling coils on the air inlet side to clean up old coils and keep new coils clean



GPS-iMOD

- Modular bi-polar ionization bar designed for any air flow and is constructed from composite, corrosion free materials, and contains carbon fiber ion needles every 1/2" down the length of the bar
- Comes standard in 6" lengths that can be assembled to make any length bar require
- Mounted in AHUs, RTUs or installed in ducts
- Provided with a power supply that can accept 24VAC to 240VAC input and power up to 6 bars at any length all while consuming only 15 watts of power
- The installation kit comes standard with mounting magnets and the brackets are already molded into the product
- Integral ion output sensing circuitry provides remote monitoring through a BMS using the integral "dry" contacts



V-MAX™ System

- Easy to install in both existing and new equipment
- Scalable design to fit any plenum size
- Fixtures can be mounted internally or externally
- Lamps can be easily mounted on vertical supports
- Negligible pressure drop
- Minimal space required for installation
- Low power consumption with universal voltage input
- Ballast is designed to easily mount in vertical support strut, reducing installation cost
- Designed for air disinfection and coil cleaning
- Designed for use with 120, 208, and 240 VAC input
- Rated for temperature 30°F to 150°F (-1°C to 65°C)
- RH: up to 90% non condensing

**Regulatory Approvals** - ETL listed to UL/Canadian standards:

- UL 1598/CSA 22.2 250
- UL 1995/CSA 22.2 236
- UL 153/CSA 22.2 12 (ABOK Air Ducted Mounted Accessories)

Input Voltage	Lamp Configuration					
	21"	Dual 21"	33"	Dual 33"	48"	61"
120	0.45	0.90	0.75	1.45	1.24	1.3
208	0.35	0.70	0.45	0.90	0.75	0.80
240	0.30	0.60	0.40	0.80	0.60	0.70

V-MOD® Coil Cleaning

- Patented "plug-n-play" design for ease of installation
- Easy to install in both existing and new equipment
- Minimizes costly maintenance
- Flexible for use in side access systems
- Replaces old cleaning methods that can be dangerous
- Maintains HVAC system capacity
- Lowers energy cost
- Designed for use with 120 VAC input
- Rated for temperature 30 F to 150 F (-1 C to 65 C)
- RH: up to 90% non condensing

**Regulatory approvals:**

- UL 1598/CSA 22.2 250
- UL 1995/CSA 22.2 236
- UL 153/CSA 22.2 12 (ABOK Air Ducted Mounted Accessories)

Input Voltage	Lamp Configuration		
	18"	24"	36"
120	0.5	0.50	0.80







### 3D PreVent Filters

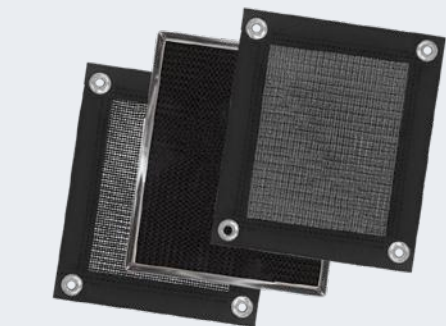
- Approximately 1/8" thick, can be made in any size diameter
- Custom air filters sewn with vinyl edging, elastic cloth binding or sonic welded edges to fit over any sized air inlet
- Contains one layer of washable electrostatic polypropylene media, black, or white
- *Model Bonnet*: fits over the circular front side of a fan guard grill to stop dust and dirt from blowing out
- *Model Diffuser*: fits on a drop down ceiling vent diffuser held in place with a standard metal grid panel system
- *Model Vent Cap*: can be square or rectangular to fit ceiling or wall vents, finished with an elastic edge (standard height is 4", custom height is available upon request)



### HailStop Hail Guard

- Offers protection from hail and designed to deflect airborne objects from damaging condenser coils and fins
- Netting is made of rigid black polypropylene with diamond shaped openings
- Lightweight and easy to install
- UV protected, rot resistant, weather resistant, abrasion and corrosion resistant

### PreVent Air Filter Screens



- Draws in and traps airborne particulates
- Constructed with one or two layers of 3-dimensional black honeycomb polypropylene electrostatic air filter media
- Available in custom shapes and custom cutouts
- Slide into air filter holding channels or finished with Permatron patented magnetic mounted strips
- *Model R*: encased in a 1/8"-3/8" rigid black galvanized steel frame in various thicknesses
- *Model BHA*: constructed with one layer of black PVC-coated polyester high-abrasion media, encased in a sewn vinyl edge with single or double stitching and attached via stainless steel grommets (meets NFPA-701 Flame Resistance)



### Washable Filters

- Simple way to achieve good indoor air quality, equipment protection air filtration, and green initiatives
- The ability to clean the filters plus the benefits of long-term durability offer the most cost effective, energy efficient, and environmentally friendly solutions
- Constructed from electrostatic, polypropylene, foam, non-woven polyester, or metal mesh



**AAF** is one of the world's largest manufacturers of commercial and industrial air filters, making a wide variety of products for removing airborne particulates and gaseous contaminants.



### Bag In/Bag Out Containment Housing

Many custom options are available, including static pressure taps, test ports, transitions, dampers and in place test sections which allow the operator to perform individual filter system efficiency test without having to enter the system or otherwise disrupt its operation.

BF-Series	BG-Series	G-Series
<ul style="list-style-type: none"> <li>- Designed for gel seal primary filters</li> <li>- Used in critical process, where dangerous airborne particulate or gases must be prevented from entering the atmosphere</li> </ul>	<ul style="list-style-type: none"> <li>- Designed to meet the air filtration needs of industries and research facilities that handle dangerous or toxic biological, radiological, or carcinogenic materials</li> <li>- Features a side access bag in/bag out port to allow contaminated filters or carbon absorbers to be removed safely</li> </ul>	<ul style="list-style-type: none"> <li>- Allows a single filter element to be installed in a low CFM ventilation system</li> <li>- Designed for both particulate filtration and gas filtration</li> </ul>

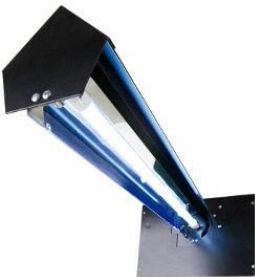


Dynamic Air Quality Solutions is an innovative and technologically advanced manufacturer of affordable air quality solutions optimized to reduce energy consumption.



Integrated Air Purification Systems (1,400 - 2,400 CFM)

- RS-2: includes two 1" Dynamic Air Cleaners in a V-Bank configuration to increase filter face area for more effective air cleaning at a lower air velocity
- RS-3: includes two 1" Dynamic Air Cleaners in a cased V-Bank configuration and Dynamic Sterile Sweep UVC system to provide concentrated UVC light across the surface of the air cleaners
- RS-4: includes a 1" Dynamic Air Cleaner, high-intensity UVC lamp, and an activated carbon matrix module to collect odors and gas phase containments
- Effectively controls all three elements of indoor air pollution - particles, biological microbes, and gas-phase odors/VOCs



Sterile Sweep™

- Features an oscillating germicidal lamp that kills pathogens collected by the Dynamic Air Cleaners as it slowly oscillates over the filter media surface area
- Parabolic reflector provides additional concentration of UVC light
- High output UVC lamp offers the most effective means of controlling airborne pathogens and viruses



Tandem Panels (1-2")

- Designed to fit most commercial applications, and slide directly into 2" filter tracks in most self-contained package rooftop units
- 2" individual panels wire to a single power supply or a control panel (available as optional accessories)
- For applications where static pressure constraints do not allow for 2" air cleaners, Dynamic also offers 1" panels
- Each air cleaner uses a replacement media pad with patented activated charcoal carbon center screens for maximum effectiveness and odor control



Versacomb™, Activated Carbon System

- Removes target containments without the energy cost penalty, supplying purified air more efficiently
- Engineered to deliver an 80% - 90% upstream/downstream removal
- Density – 26.6 lb/ft3, crush Strength – 600 psi minimum, dust-free under normal operation
- Removal Capacity: Hydrogen Sulfide – 40% by weight, Sulfur Dioxide – 4% by weight, Xylene – 13% by weight, Toluene – 9% by weight



Bag In/Bag Out

- Safe, simple, reliable method for removing contaminated particulate filters and/or gas absorbers
- Maintenance personnel are protected from coming in direct contact with the interior of the housing and hazardous contaminants during filter change-out
- Housings are available for 12", 16" and 18" absorber filter cells
- Designed to withstand +/- 20" WG and factory tested to +10" WG in accordance with ANSI/ASME N 509 and N510



AstroFan

- Low energy consumption up to 30 - 40%
- Backward curved motorized impeller uses minimal electricity
- Variable speed controller and smart electronic control (EC) system
- Low noise
- High static pressure
- Sturdy construction
- Monitoring system and one stop control up to 7,688 units are available with EC system



AstroCel® III

- Ideal for demanding operating conditions in critical applications
- Longer service life — 436 square feet of media — means fewer change-outs
- Low energy consumption and lower operating costs
- High-capacity operation with minimal resistance to airflow
- Chemical-resistant anodized aluminum frame provides superior strength
- One-piece polyurethane gasket seal and gel seal designs available



# Variable Frequency Drives

\*Availability varies by location, please call your local store.



## Why Daikin VFDs are a smart choice

- Easy-to-use advanced HVAC controls
- Competitive pricing while covering nearly all HVAC applications through two-tier offering
- Same-day shipping on in-stock VFDs
- Quick ship options available on non-stocked VFDs
- Embedded serial communications standard

## Applications

Daikin VFDs can be added to most motor and pump applications to reduce energy costs during low demand periods of your HVAC system. Daikin VFDs are designed and tested for use with a variety of HVAC system components.

- Rooftop units
- Air handling units
- Chilled water pumps
- Heating water pumps
- Cooling water fans
- Condenser water pumps



Utilize Daikin Variable Frequency Drives to increase your HVAC system performance and save on energy costs.

## VARIABLE FREQUENCY DRIVES



- Helps decrease downtime
- Reduces installation space
- Cuts expedited shipping fees
- Condenses the need for on-site VFDs due to redundancy

Style	Horsepower	Voltage	Details	Contact your local HTS parts store for pricing.
Vertical VFD with Bypass	5hp-50hp	460/60/3	-3 contactor bypass - Main disconnect - Graphical display - BACnet card	
VFD chassis only	3hp-50hp	460/60/3		

# Fan Coils

\*Availability varies by location, please call your local store.



## ThinLine horizontal and vertical units

- **Flexible valve and piping options:** software selectable, factory mounted, and normal closed/open, on/off, modulating (*horizontal and vertical units*)
- **Configuration options:** exposed, concealed, and recessed (*horizontal units*) flat top, sloped top, and hide-away (*vertical units*)
- **Cabinet colors options:** cupola white, off-white, antique ivory, putty beige, soft gray, and custom (*custom horizontal unit only*)
- **Grille options:** stamped or multi-directional outlet grilles, and return grille (*horizontal and vertical units*)
- **Extended end pocket options:** 4" each side or 8" each side (*horizontal and vertical units*)
- **Controller options:** MicroTech® III, 3-speed switch or low voltage, analog or digital t-stat, remote or unit mounted, and 3-speed or staged fan (*horizontal and vertical units*)
- **Electric heat options:** single point power connections, and total or auxiliary heat (*horizontal and vertical units*)
- **Fan motor options:** 4 high-efficiency ECMs, and standard efficiency PSC motor (*horizontal and vertical units*)
- **Primary/secondary drain pan options:** sloped/ polymer, easily removable, and noncorrosive plastic or stainless steel (*horizontal and vertical units*)
- **Coil options:** (*horizontal and vertical units*)
  - 2, 3, or 4-row main
  - 1 or 2-row preheat or 1-row reheat
  - Hot water or steam
  - Same or opposite end connections
  - Multiple circuit selections

# Heat Pumps

\*Availability varies by location, please call your local store.



**Daikin** designed the first complete line of water source heat pumps with high efficiency, outstanding reliability, and quiet operation for individually zoned comfort control in commercial, institutional, and industrial buildings.



## Enfinity™ Console In-Room

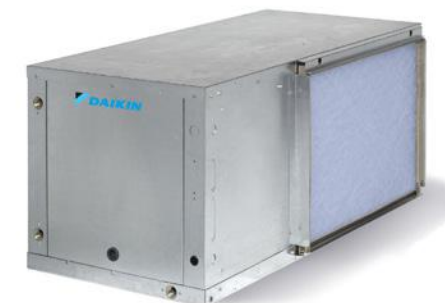
- 1/2 ton - 1.5 ton
- Models MHC and MHW
- R-410A refrigerant
- Exceeds ASHRAE 90.1 efficiency standards by up to 35%
- High efficiency reduces energy consumption and operating costs



**48%  
smaller**

## Smartsource® Compact Vertical Water Source

- 1/2 ton - 6 ton
- Model GCV
- Small footprint for easy replacement of most WSHPs
- Dehumidification for increased occupant comfort
- Low operating costs, easy installation, and quick serviceability



## Enfinity™ Horizontal Ceiling Mounted

- 1/2 ton - 10 ton
- Model CCH standard range
- Model CCW geothermal range
- Non-CFC, R-410A refrigerant
- High efficiency reduces energy consumption and operating costs





Omega Heat Pumps provides all in one heating and cooling solutions for residential and commercial applications. Founded in 2006, the company continues to expand its product offering to meet the rigorous requirements for green, quiet, and comfortable heating and cooling.



Eubank Division of Airxcel, Inc. is a fast growing manufacturer of Wall mount packaged air conditioners and heat pumps.

OEM PARTS  
REPLACEMENT EQUIPMENT



Omega HRP Series

- 3/4 ton - 2.5 ton
- R-410A refrigerant
- Easy installation
- Direct slide-in replacement for Enerzone



Omega VI (Whalen Replacement)

- 3/4 ton - 2 ton
- Direct replacement for Whalen VI units
- Very quiet unit



Omega 816 (Climate Master Replacement)

- 3/4 ton - 2 ton
- Direct replacement for Climate Master 816 units
- New updated controls make for any easy retrofit



HCA Series (McQuay Replacement)

- 3/4 ton - 2 ton
- Replacement for McQuay HCA units
- Simple drop-in replacement unit with added feature of modern microprocessor control capabilities



VF Series

- 3/4 ton - 2 ton
- Replacement for the Singer/McQuay series VF/VP/VG units
- Simple drop-in replacement unit with added feature of modern microprocessor control capabilities



Hybrid Series

Standard heat pump system with added benefits of hydronic heating. This marriage of two technologies makes this product a green option, as it takes advantage of free heat.



WalPac H/P

High Efficiency Heat Pump

- 14 IPLV, 9-11 EER & 3.0 COP
- Available 2-stage compressor
- 2-5 ton available capacities
- Free air options



EAA1020A-EAA1060A EGA1072A

High Efficiency Air Conditioners

- 10.00 - 11.00 EER
- 1.5 - 6 Ton Air Conditioners
- Optional Outside Air & Dehumidification

# PTACs & Self-Contained Units

\*Availability varies by location, please call your local store.



**Applied Comfort** is focused on designing and manufacturing class-leading, high-quality, energy-efficient Packaged Terminal Air Conditioners (PTACs) from OEM chassis specifications with premium components.



## DMQ Series

- 32" wide
- Premium component design with digital controls
- Front desk and emergency management system ready
- Switchable to 24V remote thermostat



## i42 Inverter

- State-of-the-art INVERTER technology fits in standard 16"x 42" PTAC sleeves
- Energy savings of up to 30%
- Reduced operation sound levels
- Modulating INVERTER technology ensures consistent dehumidification and highest efficiency



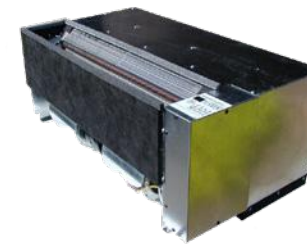
## Type K Replacement

- 36", 36.5" wide
- Innovative replacement for all three sections of original legacy chassis
- Class-leading energy performance
- Electronic touch-pad controls switchable to wall thermostat and EMS
- Direct slide-in to existing wall sleeve

## PTACS & SELF-CONTAINED UNITS

### Series 16/AAF/PNES Replacement

- 37.5", 41.5" wide
- Class-leading efficiency
- Quiet operation
- Commercial-duty construction and premium components



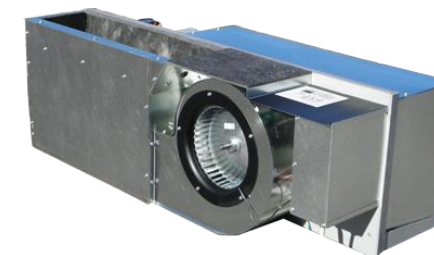
### Calm 42 Series

- 42" wide
- Universal heater design (U42), fixed-amperage (C42), and innovative INVERTER models (i42)
- Class-leading efficiency
- Quiet indoor sound
- Electronic temperature limiting



### EA Series

- 45" wide
- Commercial-duty, quiet high-static pressure for ducting
- Class-leading efficiency
- Quiet operation
- High-quality performance and premium components
- Easy installation



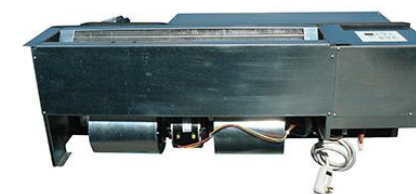
### CDF Series

- Exact Chromalox™ replacements, 44" wide
- Heavy-duty components and materials for superior performance and durability
- High-energy efficiency
- Long reliable service life



### RS Series

- 45" wide
- High-performance design
- Class-leading efficiency
- Quiet operation
- Commercial-duty, durable premium components





# Mini Split Systems & VRV

\*Availability varies by location, please call your local store.



**Daikin** VRV system is a multi-split type air conditioner for commercial buildings that uses variable refrigerant flow control developed by Daikin to provide customers with the ability to maintain individual zone control in each room and floor of a building.



**2' x 2' Ceiling Cassette - FFQ Series**

- 9,000 to 18,000 BTU/h heat pump
- 2, 3, or 4-way airflow pattern
- Built-in condensate pump (up to 22")
- Fresh air intake knockout
- Match with multi-split MXS outdoor models



**Skyair Roundflow Cassette - FCQ Series**

- 18,000 to 42,000 BTU/h heat pump or cooling only
- Up to 17.5 SEER and up to 10.1 HSPF
- 23 configurable airflow patterns ensure ideal airflow distribution
- 360° airflow reduces draft
- Match with RZQ heat pump or RZR cooling only models



**Floor Standing - FVXS Series**

- 9,000 to 18,000 BTU/h heat pump only
- Up to 18.0 SEER
- Option to partially recess or flush mount to wall
- Flexible room applications
- Match with MXS and RMXS only



**Wall Mounted - CTXS\_Q Series**

- 9,000 to 18,000 BTU/h heat pump only
- Up to 18.9 SEER and up to 12.5 HSPF
- 3D airflow for an even distribution of air
- Wireless control as standard
- Can be controlled remotely with the Daikin Comfort Control App\*
- Match with MXS and RMXS only

*\*Requires purchase and installation of adapter (BRP069A41)*



**Single-Zone - RXL Heat Pump**

- 9,000 to 15,000 BTU/h
- Up to 20.0 SEER and up to 12.5 HSPF
- Heating operation down to -13°F (-25°C)
- Pre-charged for up to 33 ft.
- For rooms up to 1,600 sq. ft.



**Single-Zone - RX, RXN, RXS, RXG Heat Pump and RK, RKN Cooling Only**

- 9,000 to 24,000 BTU/h
- Up to 26.1 SEER
- Slim, compact design
- Pre-charged for 33 ft. of refrigerant piping
- For rooms up to 1,600 sq. ft.



**Single-Zone - RXS & RZQ Heat Pump or Cooling Only**

- 18,000 to 42,000 BTU/h
- Up to 20.0 SEER
- Choose from 6 indoor ducted and ductless model types
- Up to 230 ft. total piping length
- Operation down to 0°F (-40°F with optional low ambient cooling kit on select models) (-17.78°C and -40°C)
- User-friendly, intelligent controls



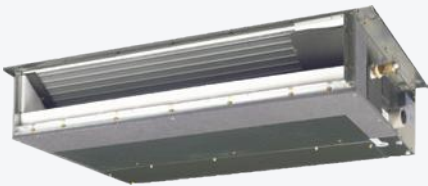
**Skyair Ceiling Suspended - FHQ Series**

- 18,000 to 42,000 BTU/h heat pump or cooling only
- Up to 18.0 SEER and up to 11.1 HSPF
- Auto-swing capability with 100° airflow pattern for comfortable distribution
- Lateral servicing space allows installation in corners, narrow spaces, walls, and ceilings
- Innovative stream fan technology
- Match with RZQ heat pump or RZR cooling only outdoor models



**Multi-Zone - MXL Heat Pump**

- 18,000 to 24,000 BTU/h
- Up to 17.90 SEER and up to 12.5 HSPF
- Anti-corrosion treatment of outdoor heat exchanger
- Specialized drain pan design for improved cold climate drainage
- Heating operation down to -13°F (-25°C)
- Chargeless 131.6 ft.



**Multi-Zone - MXS Heat Pump**

- 18,000 to 48,000 BTU/h
- Up to 19.5 SEER and up to 9.5 HSPF
- Mix and match indoor unit flexibility
- Up to 130% connection ratio
- Long piping lengths up to 433 ft. total
- Connect 2-8 indoor units to one outdoor unit

*\*RMXS48LVJU requires at least one branch port unit. Refer to Engineering Guide for details.*








OEM PARTS

REPLACEMENT EQUIPMENT

Indoor Units - Ducted

MODEL	FEATURES	PRODUCT NAME
Concealed Ceiling Unit (Medium Static)	<ul style="list-style-type: none"><li>- Design flexibility with a capacity range up to 96 MBH</li><li>- Improved ductwork and filtration flexibility with high CFM and ESP capabilities</li><li>- Low profile design of less than 19" high to reduce required installation space</li><li>- Ideal for hotels, schools, and retail</li></ul>	<div>FXMQ-MVJU</div> <div></div>
Slim-Duct, Built-in Concealed Ceiling Unit	<ul style="list-style-type: none"><li>- Slim height, at only 7-7/8"</li><li>- Washable filter included</li><li>- Low sound level</li><li>- Factory shipped for rear air inlet, field convertible to bottom air inlet</li><li>- Condensate pump with vertical lift of up to 21-5/8" included as standard</li></ul>	<div>FXDQ-MVJU</div> <div></div>
Multi Position Air Handling Unit	<ul style="list-style-type: none"><li>- Compact footprint fits tight spaces</li><li>- Capable of up-flow, horizontal-right, horizontal-left, and down-flow installation (Down-flow with a field installed accessory kit)</li><li>- Nominal CFM up to 0.9" external static pressure</li><li>- Improved auxiliary heat logic</li><li>- Optional slide-in electric heat up to 5 kW</li></ul>	<div>FXTQ-TAVJU</div> <div></div>
DC-Ducted Concealed Ceiling Unit	<ul style="list-style-type: none"><li>- Energy efficient due to DC motor</li><li>- Ideal to use together with the optional Daikin Zoning Kit, DZK</li><li>- Enhanced indoor air quality and LEED ready with MERV 13 filter options</li><li>- Flexible ductwork design with ESP capabilities up to 0.8" W.G.</li><li>- Installation flexibility with a low profile, compact design at least 12" in height</li></ul>	<div>FXMQ-PBVJU</div> <div></div>
Concealed Floor Standing Unit	<ul style="list-style-type: none"><li>- Ideal for installation beneath a window</li><li>- Requires minimal installation space</li><li>- Fitted with a washable long-life filter</li><li>- Space-saving unit can be freestanding or wall-mounted</li></ul>	<div>FXNQ-MVJU9</div> <div></div>

Indoor Units - Ductless

MODEL	FEATURES	PRODUCT NAME
Round Flow Sensing Cassette	<ul style="list-style-type: none"><li>- True 360° airflow and three room sensors enable optimized occupant comfort</li><li>- Energy efficient with DC fan motor and auto-logic that adjusts fan speed</li><li>- Optional self-cleaning filter panel to further increase efficiency and reduce maintenance</li><li>- Increased indoor air quality with high efficiency filter options and ventilation connection kit</li><li>- Very flexible with 18 different possible airflow patterns</li></ul>	<div>FXFQ-TVJU</div> <div></div>
4-Way Ceiling-Suspended Cassette	<ul style="list-style-type: none"><li>- Very low unit height of under 8"</li><li>- Optional sensor kit enables input from 3 room sensors</li><li>- Stylish unit blends easily with any interior</li><li>- Individual air louver control</li></ul>	<div>FXUQ-PVJU</div> <div></div>
2' x 2' 4-Way Ceiling-Mounted Cassette	<ul style="list-style-type: none"><li>- Fits in standard 2' x 2' ceiling grid</li><li>- Sound pressure levels are as low as 29 dB(A)</li><li>- Space-saving depth of units requires only 11.6" of ceiling space</li><li>- Easy-to-clean grille, washable long-life filter</li><li>- Simple installation with an easy-to-fit decoration panel</li></ul>	<div>FXZQ-MVJU9</div> <div></div>
Ceiling-Mounted Cassette (Single Flow)	<ul style="list-style-type: none"><li>- Space-saving at 7-7/8" in height and 18-1/2" in width</li><li>- Equipped with both horizontal and vertical louvers to optimize the airflow and throw</li><li>- Can be set to 5 predetermined fan speeds which allows for optimum and comfortable airflow</li><li>- Factory installed condensate pump with a lift capacity of up to 33-7/16"</li></ul>	<div>FXEQ-PVJU</div> <div></div>
Ceiling-Suspended Unit	<ul style="list-style-type: none"><li>- One of the slimmest indoor units, less than 8"</li><li>- Wide air discharge outlet distributes a comfortable airflow throughout the entire space</li><li>- Innovative stream fan technology keeps sound pressure levels low</li><li>- Smooth flat louver design, long-life filter is standard</li></ul>	<div>FXHQ-MVJU</div> <div></div>
Wall-Mounted Unit	<ul style="list-style-type: none"><li>- Auto-swing mechanism ensures efficient air distribution via louvers</li><li>- Wide air discharge outlet distributes a comfortable airflow throughout entire space</li><li>- Horizontal louvers and front panel can be easily removed for cleaning, drain pipe can be easily hidden from sight</li></ul>	<div>FXAQ-PVJU</div> <div></div>
Floor-Standing Unit	<ul style="list-style-type: none"><li>- Ideal for installation beneath a window</li><li>- Unit requires minimal installation space</li><li>- Fitted with a washable long-life filter</li><li>- Remote-control options available</li><li>- Space-saving unit can be freestanding or wall-mounted</li></ul>	<div>FXLQ-MVJU9</div> <div></div>





## Outdoor Units

### VRV IV



#### Heat Recovery

- Fully integrated solution with heat recovery offers high efficiencies with IEER values up to 29.3
- Total comfort solution for heating, cooling, ventilation, and controls
- Outstanding warranty\* with 10 year compressor and parts limited warranty as standard
- Perfect personal comfort for guests/tenants via simultaneous cooling and heating
- Incorporates VRV IV standards and technologies such as variable refrigerant temperature and all inverter compressors
- Unique range of single and multi-port branch selector boxes
- Heating function down to -13°F (-25°C) ambient air temperature
- Daikin VRV IV is the first variable refrigerant flow (VRF) system to be assembled in North America

### VRV IV



#### Heat Pump

- Total comfort solution for heating, cooling, ventilation, and controls
- Energy efficiency values up to 28 IEER
- Incorporates VRV IV standards and technologies such as variable refrigerant temperature and all inverter compressors
- Best-in-class warranty\* with 10 year compressor and parts limited warranty as standard
- Daikin VRV IV is the first variable refrigerant flow (VRF) system to be assembled in North America

*\*Complete warranty details available from your local HTS representative or online at [www.daikincomfort.com](http://www.daikincomfort.com)*

### VRV IV-S



#### Air Cooled

- Equipped with built-in intelligence for independent zoning control with maximum flexibility and energy savings
- Available in 3,4, and 5 ton modules
- Increase in efficiency up to 18 SEER & 10.5+ HSPF
- Broader diversity with ability to connect up to 10 indoor units
- Space-saving design, at under 39" high, is over 25% smaller as compared to VRV III-S
- Easier to install with over 60% weight reduction vs VRV III-S
- Low sounds level for comfort
- Higher reliability with Daikin's swing compressor
- Dependable operation in extreme ambient conditions up to 122°F (50°C)
- Added safety and peace of mind with optional auto changeover to auxiliary heat
- Backed by a best-in-class 10-year parts limited warranty\*

### VRV IV



#### Water Cooled

- Enable geothermal energy as an energy source
- Can be applied to both geothermal and boiler, cooling tower applications
- Geothermal mode eliminates need for an external heating or cooling source
- Compact and lightweight design can be stacked for maximum space-saving
- Can be applied to both geothermal and boiler/tower applications as standard with condenser water inlet temperature as low as 14°F (-10°C) in heating and 27°F (-2.78°C) in cooling

*\*Complete warranty details available from your local HTS representative or online at [www.daikincomfort.com](http://www.daikincomfort.com)*

# Humidification

\*Availability varies by location, please call your local store.



## Electric Resistive Humidifiers



### SKE4

- Capacities from 6 - 270 lbs/hr (2.7-122 kg/hr)
- Fast and easy maintenance
- User friendly interface, menu-driven LCD
- Environmentally friendly
- No plastic cylinder to replace
- Permanent stainless steel evaporation chamber
- Optimize use of boiling water with no unnecessary drain
- Drain water tempered to below 140°F (60°C)



### SKR - Residential

- Capacities from 4.5-12lb/hr (2-5.5kg/hr) of steam
- On/Off or modulating maintenance operation, self cleaning elements
- Permanent cleanable stainless steel evaporation chamber
- Siphon drain requires no drain valve or external tap
- Permanent cleanable chamber
- Low installation cost
- Produces clean, sterile steam
- Compact size

## Gas-Fired Humidifiers



### SKG4

- Capacities from 110 - 810 lbs/hr (50 to 370kg/hr)
- Fast and easy maintenance
- Fully modulating, ranging from 10 lbs/hr to maximum
- Flexible design for indoor/outdoor applications
- One of the highest combustion efficiencies in the industry and smallest carbon footprint
- Optimize use of boiling water
- Drain water tempered to below 140°F (60°C)
- Combustion efficiency: 83% to 87%



## Steam-to-Steam Humidifiers

### SKS4

- Capacities from 33-1250lb/hr (15-570kg/hr) of steam
- Boiler steam pressure from 5 to 15 psi (34.5 to 103 kPa)
- Stainless steel 316 heat exchanger
- Comprehensive scale management system cleans within minutes
- Ease of maintenance with comprehensive scale management system
- Environmentally friendly
- Optimize use of boiling water
- Drain water tempered to below 140°F (60°C)

## Direct Steam Humidifiers



### SKD - Multi-Steam™ Distribution

- Custom designed to meet your requirements
- Unique Electronic Steam Controller (SKDESC)
- Available patent pending X-Stream™ technology
- Available patent pending Pressurized Condensate Return (PCR) System

## High Pressure Atomizing Humidifiers



### SKH

- Humidify and cool
- Built-in energy efficient control sequences
- Uses energy from ambient air
- Capacities from 66-4638 lbs/hr (30-2108 kg/hr)
- In-duct or in-space spraying
- Up to 21°F (12°C) of free cooling
- Precision of ±1% RH
- Integration via BACnet MS/TP

## Evaporative Humidifiers



### SKV

- Custom modular design to fit any application
- Specifically configured SKV Controller
- Four efficiencies: 65%, 75%, 85% and 95%
- Inorganic and inflammable material (UL900 Class 1)
- Unique design resulting in low pressure drop

## Distribution Systems



### Steam

- Wasted energy reduced by up to 85%
- Investment payback with energy savings in appx. 15 months
- Prevents condensate ejection
- 100% stainless steel construction (reduces maintenance)

## Humidity Controls



### HRO - Wall Mount Humidity Controller

- Combination humidifier controller and room humidistat
- Built-in humidification and dehumidification sequences
- Stand-alone or BACnet
- 4 inputs and 6 outputs
- Fully configurable PID on all ramps







**Armstrong** is an industry leader and trusted provider for effective, economical, and trouble-free humidification solutions since 1938. These humidifiers protect critical equipment and material in museums, manufacturing facilities, schools, office buildings, and more.



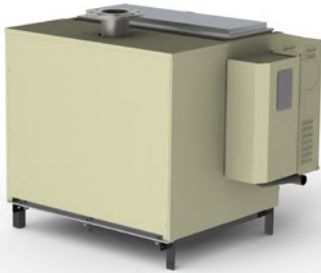
**Conditioned Steam**

- Guides the steam through a carefully engineered process with an upgraded hardware design
- Four-step conditioning process: *strain* particulate matter, *separate* condensate from the vapor, *dry* any remaining mist before the steam leaves the humidifier, and *silence* the steam with a material lining the drying chamber that absorbs the noise of escaping steam



**Steam-to-Steam**

- Use of Ionic Bed Technology reduces the amount of maintenance and improve overall performance of the unit
- Ionic beds are made from fibrous media
- Scale will build up on beds as opposed to the heat exchanger, keeping the humidifier clean



**Gas-Fired Steam**

- Operates economically on natural gas or propane and reduces operating costs
- Ionic Bed Technology cuts costs even more by trimming the labor and downtime associated with cleaning humidifiers
- Adaptable to various water qualities, and service life cycle and tank drainage are field-adjustable



**Electric Steam**

- Used when a source of steam is not available
- Electricity and water create steam at atmospheric pressure
- Electrode-type units pass electrical current through water to provide proportional output

Commercial & Industrial Fans

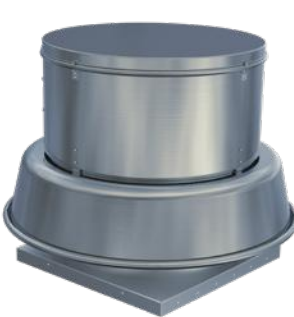
\*Availability varies by location, please call your local store.



**Twin City Fans & Blower** is an industry leading designer and manufacturer of high quality custom, semi-custom, and standard fans ranging from heavy dusty industrial process fans, OEM fans, to a comprehensive line of commercial supply and exhaust fans for the HVAC plan and spec market.

**CENTRIFUGAL ROOF & WALL EXHAUSTERS**

Centrifugal roof and wall exhausters are available in direct and belt driven models, featuring backward inclined, non-overloading centrifugal wheels for maximum efficiency and quiet operation. A variety of configurations are available for the exhaust of relatively clean air and grease-laden air.



**Downblast Roof Exhausters**

- DCRD - Direct Drive
- BCRD - Belt Driven
- BCRD - E - Belt Driven, Endurex™ Housing



**Upblast Roof Exhausters**

- DCRU - Direct Drive
- DCRUR - Kitchen, Direct Drive
- BCRU - Belt Driven
- BCRUR - Kitchen, Belt Driven
- BCRUSH - Smoke & Heat, Belt Driven

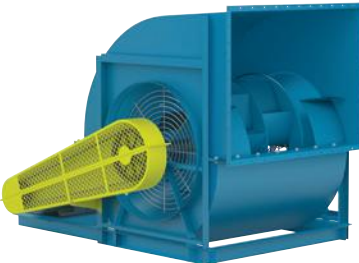
**CENTRIFUGAL FANS**

Centrifugal fans are designed for general HVAC and industrial applications where large volumes of clean air are required at low to moderate pressures. With backward inclined, backward curved, backward inclined airfoil and forward curved wheel types, centrifugal fans offer the flexibility to match the performance and application at the highest efficiency. Most models are available in single-wide or double-wide configurations, which allow for even higher volumes of air.



**SWSI Centrifugal Fans**

- BAE-SW - Airfoil
- BAF-SW - Airfoil
- BC-SW - Backward inclined
- NFC-SW - Forward curved
- BAFF - Airfoil, composite



**DWDI Centrifugal Fans**

- BAE-DW - Airfoil
- BAF-DW - Airfoil
- BC-DW - Backward inclined
- NFC-DW - Forward curved
- FC-DW - Forward curved

# Heating

\*Availability varies by location, please call your local store.



## High Intensity Heaters

High intensity heaters can be used for complete, spot, and partial heating of commercial, industrial, sports facilities, and hospitality applications. High intensity heaters work with high temperatures at the ceramic surface and emit heat rays to the specified area(s).

Standard Efficiency - Series S   Mid Efficiency - Series M   High Efficiency - Series KMI



“**Warmth with Infrared - As Old as Earth Itself**

Life on earth began and is sustained because the rays of the sun travel through space to give light and warmth to our planet. The infrared rays that reach us pass through the atmosphere and warm the surface of the earth which becomes a heat reservoir and releases warmth back to the atmosphere by convection, raising the ambient temperature of our environment. Infrared heaters function with the same principles of physics. An emitter is heated to a temperature at which it radiates infrared rays. The floor, objects, machinery and people in the room absorb the infrared waves and become secondary radiators raising the general air temperature.

”

## Series WTS - Performance Beyond its Class



- Two stage
- 40,000 to 205,000 btu/h
- Natural gas or propane
- Vented or unvented use
- 3 try DSI ignition with self-diagnostic
- 3-prong plug for electric supply
- Reflector end caps are standard
- Operating indicator light
- Lifetime limited warranty on burner head
- 2 years limited warranty on controls
- 5 years limited warranty on hot rolled heat exchanger
- 7 years limited warranty on aluminized heat exchanger
- No hanging chain required on burner
- 89% efficient deep dish aluminum reflector
- All control components separated from burner compartment

## Low Intensity Infrared Heaters - Series T

The Series T, two stage, low intensity gas fired infrared heaters are competitively priced and packaged to maximize configurations while minimizing inventory. With heavy-duty construction, the Series T infrared heaters feature the best overall performance in the industry.

## Standard High Efficiency Heater - Model TA



- Two stage heater – dual output for improved rate differential
- 40,000 to 220,000 btu/h
- Natural Gas or LPG
- Parabolic aluminum reflectors
- Direct spark ignition
- Vented or unvented
- Jet Stream burner
- Heavy duty couplings
- Operating status lights
- Low voltage controls
- 3 year warranty on all components
- 5 year warranty on hot rolled heat exchanger
- 7 year warranty on aluminized heat exchanger with post purge feature
- 10 year warranty on optional aluminized heat exchanger with post purge feature

## Deluxe High Efficiency Heater - Model TX



- Totally enclosed burner construction
- Two stage heater – dual output for improved rate differential
- 40,000 to 220,000 btu/h
- Natural Gas or LPG
- Configurations of "U" and "L", horizontal or 45°
- Self diagnostic ignition module
- Parabolic aluminum reflectors
- Direct spark ignition
- Vented or unvented
- Jet Stream burner
- Heavy duty couplings
- Operating status lights
- Low voltage controls
- 3 year warranty on all components
- 5 year warranty on hot rolled heat exchanger
- 7 year warranty on aluminized heat exchanger
- 10 year warranty on aluminized heat exchanger with post purge feature

## Rugged High Efficiency Heater - Model TXR



- Two stage heater – Approved for outdoor use
- 40,000 to 220,000 btu/h
- Natural Gas or LPG
- Parabolic aluminum reflectors
- Direct spark ignition
- Vented or unvented
- Jet Stream burner
- Heavy duty couplings
- Operating status lights
- Low voltage controls
- Rubber gaskets
- Silicone used to seal corners and joints
- Weather resistant electrical components used for exterior connections
- 3 year warranty on all components
- 5 year warranty on hot rolled heat exchanger
- 7 year warranty on aluminized heat exchanger
- 10 year warranty on aluminized heat exchanger with post purge feature

REPLACEMENT EQUIPMENT





# Air Curtains

\*Availability varies by location, please call your local store.



## Phantom 10 (PH10)

- The right choice when the unit needs to blend in with the building's aesthetics and when recess-mounting and unit concealment are preferred without any sacrifice to performance
- Mounting heights up to 12'

Name	Width	Heat Mode	Voltage	KWv
PH1036-1ECB-PW	36	Electric	230/1/60	6
PH1036-1EBB-PW	36	Electric	208/1/60	6
PH1036-1EEH-PW	36	Electric	208/3/60	12
PH1036-1EFH-PW	36	Electric	230/3/60	12

## WindGuard (BD) 14

- Strong enough for industrial applications, the HV (High Velocity) series features 1 horsepower motor(s) strong enough to take on significant wind loads
- Mounting heights up to 14'



Name	Width	Heat Mode	Voltage	KW
BD1496-1EH-TS	96	Electrical	460/3/60	110
BD1496-1XG-TS	96	Hot water double row	208-230/3/60	-
BD1496-1XH-TS	96	Hot water double row	460/3/60	-
BD1496-1IG-TS	96	Indirect gas fired	208-230/3/60	-

## High Velocity 2 (HV2)



Name	Width	Heat Mode	Voltage	KW
HV236-1UG-TS	36	Unheated	208-230/3/60	-
HV236-1UA-TS	36	Unheated	115/1/60	-
HV236-1UD-TS	36	Unheated	208-230/1/60	-
HV236-1UH-TS	36	Unheated	460/3/60	-

# AIR CURTAINS

## ETL Sanitation Certified - LoPro 2 (LPN2)

- Same sleek consumer-friendly design of LoPro series with added ETL Sanitation Certified for food service applications
- Mounting heights up to 7'



Name	Width	Heat Mode	Voltage	KW
LPN236-1UA-OB	36	Unheated	115/1/60	-
LPN236-1UD-OB	36	Unheated	208-230/1/60	-
LPN242-1UA-OB	42	Unheated	115/1/60	-
LPN242-1UD-OB	42	Unheated	208-230/1/60	-

## LoPro 2 (LPV2)

- A sleek, low-noise line with variable speed control ideal for customer facing commercial installations
- Mounting heights up to 8'



Name	Width	Heat Mode	Voltage	KW
LPV236-1ECC-OB	36	Electrical	230/1/60	6.1
LPV236-1EBC-OB	36	Electric	208/1/60	6.1
LPV236-1EEG-OB	36	Electric	208/3/60	10
LPV236-1EFG-OB	36	Electric	230/3/60	10

## Standard 2 (STD2)

- This commercial and industrial hybrid features a 1/2 horsepower power motor(s) and available in ETL Sanitation Certified
- Mounting heights up to 12'



Name	Width	Heat Mode	Voltage	KW
STD2108-3EHS-OB	108	Electrical	460/3/60	36
STD2108-3WG-OB	108	Hot water single row	208-230/3/60	-
STD2108-3WA-OB	108	Hot water single row	115/1/60	-
STD2108-3WD-OB	108	Hot water single row	208-230/1/60	-

## Wind Stopping 16 (WMH)

- This heavy industrial line-up features belt-driven fans powered by 5 HP and larger motors resulting in performance to repel wind gusts of up to 30 MPH at heights up to 14 ft. high
- Mounting heights up to 20'



Name	Width	Heat Mode	Voltage	KW
WMH96-2EH-TS	96	Electrical	460/3/60	131
WMH96-2XG-TS	96	Hot water double row	208-230/3/60	-
WMH96-2XH-TS	96	Hot water double row	460/3/60	-
WMH96-2IH-TS	96	Indirect gas fired	460/3/60	-



# Fans

\*Availability varies by location, please call your local store.



## BIG ASS FANS®

**Big Ass Fans** is the world's leading researcher, designer, and manufacturer of High Volume Low Speed (HVLS) fans and powerful LED fixtures that are focused on delivering purpose-built, cost-effective, energy efficient commercial and industrial comfort solutions.

### Overhead Fans

### Residential Fans



#### Powerfoil X3.0

- 8-24 ft. diameter
- Hermetically sealed NitroSeal™ gearbox for zero maintenance
- Wide static shaft allows for integration of additional options
- Optional LED, explosion proof motor, and advanced control with BAFcon



#### Powerfoil D

- 8-24 ft. diameter
- Industry-leading direct-drive technology
- Quiet operation and energy efficient airflow
- IP66-rated for indoor and outdoor use
- Optional LED and advanced control with BAFcon



#### Essence

- 8-14 ft. diameter
- Ideal for public locations like bar, patios, restaurants and gyms, large residential spaces, sound-sensitive environments
- Stylish customization available



#### Basic 6

- 8-24 ft. diameter
- Patented airfoil system uses eight airfoils and winglets for maximum coverage area
- Maximum durability and airflow
- Lowest first-cost option



#### Powerfoil 8

- 8-24 ft. diameter
- Patented airfoil system uses eight airfoils and winglets for maximum coverage area
- Maximum durability and airflow



#### Isis

- 8-10 ft. diameter for ceilings as low as 12 ft.
- Silent operation
- Customizable component and color options

### Residential Fans (continued)

FANS



#### Haiku L

- 52" diameter
- Optional wired wall control and Wi-Fi module
- Integrated LED kit available
- Stylish, quiet operation, and energy efficient



#### i6

- 60", 72", and 84" diameter options
- Quiet operation
- Integrated LED kit available
- Winning trio of comfort, style, and convenience

### Directional Fans



#### Black Jack

- 6.5 ft. tall
- Quiet, efficient direct-drive motor
- Plugs into any 110V power supply
- Comes standard with indoor/outdoor wheels
- Arrives fully assembled



#### AirGo® 2.0

- 8 ft. diameter
- Delivers airflow to cover half the length of a football field
- Big air movement, near-quiet operation, all-terrain, and misting options available



#### Sweat Bee®

- 18" and 30" diameter options
- Portable base/pedestal, wall/column, and swivel arm mount options



#### Pivot 2.0

- 6 ft. diameter
- Quiet, high-volume airflow
- Over 1,000 different operating positions and controls for ultimate flexibility



#### Yellow Jacket®

- 30" diameter
- Indestructible heavy-gauge steel construction
- 10 adjustable speeds
- Portable base/pedestal, chain, I-beam, and wall/column mount options



#### Aireye®

- 20", 24", 30" diameter options
- Pedestal, wall, swivel, L-beam, C-channel mount options
- Standard, occupancy sensor, timer control options
- Speed adjustable
- 50% more CFM per watt than traditional induction motors





	<b>Epsilon:</b> Prefab central plants, pump houses, and pump skids. Central plants with high quality factory labor, shorter lead times, factory-tested systems, and less cost.
	<b>Eubank Division of Airxcel, Inc:</b> A fast growing manufacturer of Wall mount packaged air conditioners and heat pumps.
	<b>FAFCO:</b> The world’s largest manufacturer and innovator of polymeric heat exchangers, presents IceStor thermal energy storage systems.
	<b>Gates Corporation:</b> A leading manufacturer of application-specific fluid power and power transmission solutions. Gates is driven to push the boundaries of material science to engineer products that continuously exceed expectations.
	<b>Global Plasma Solutions:</b> Provides patent pending, cold plasma air purification technology that can be used as a substitute for UV lights and carbon products.
	<b>Griswold:</b> Manufacturer of oil valve & hose kit packages with or without control valves, with manual or auto balance valves.
	<b>Haakon Industries:</b> Custom designed air handling units and packaged mechanical systems.
	<b>Heat Pipe Technologies:</b> The most advanced line of heat recovery heat pipes and dehumidification available for HVAC applications.
	<b>Honeywell:</b> Control your thermostats from your smartphone, or get an early warning of gas leaks. The Home suite of products means you can take control, wherever you are.
	<b>Hydro Balance:</b> Formulates their cleaners with the right amount of active ingredients necessary to get the job done in one application. You’re paying for high quality cleaner with better results.
	<b>Innovent:</b> Custom manufacturer of commercial and industrial HVAC equipment including 100 percent outside air units, rooftop units, wheel and flat plate energy recovery units.
	<b>International Environmental (IEC):</b> Provides integrated engineered solutions for hotels, office towers, hi-rise condominiums, schools, universities, medical facilities and more.
	<b>Johnson Air Rotation:</b> Warehouse and large open area HVAC units. Chilled water, DX and heating. Low installation costs, low operating costs, and tight temperature control.
	<b>Kinetics:</b> Vibration isolation for equipment and acoustical solutions.
	<b>Klein Tools:</b> Committed to American Manufacturing, since 1857. For over 160 years Klein Tools has remained dedicated to professional tradesmen worldwide, with a commitment to manufacturing the world’s finest hand tools right here in America.
	<b>Krueger HVAC:</b> A market-leading manufacturer of air distribution products, delivering quality, innovative solutions and providing first-class customer service to the HVAC industry.
	<b>Legacy Chiller Systems, Inc:</b> Process chillers for industrial/hospital applications.
	<b>Mars:</b> Manufacturer of air curtains that helps to reduce building energy costs, keep environments sanitary, and ensures consistent building temperatures using an invisible unobstructing flow of air.
	<b>McQuay International:</b> As a part of Daikin Industries, McQuay International delivers engineered, flexible solutions for commercial, industrial and institutional HVAC requirements with reliable products, knowledgeable applications expertise and responsive support.
	<b>Motivair:</b> Leading supplier of specialty chillers and cooling systems for data centers, hospitals, industrial applications, institutional and commercial buildings.
	<b>Munters/DesChamps:</b> Commercial line for economical solutions to humidity problems in all project sectors with desiccant dehumidifiers in all cfm ranges. DesChamps develops innovative solutions for energy recovery, outside air conditioning, improved indoor air quality, and air-to-air heat exchangers.

	<b>Neptronic:</b> With an emphasis on innovative thinking and design, Neptronic manufacturers actuators, controls, actuated valves, humidifiers and duct heaters.
	<b>Omega Heat Pumps:</b> Provides all in one heating and cooling solutions for residential and commercial applications.
	<b>Permatron:</b> Design and manufacture custom, high volume OEM air filtration parts or one-time effective air filter solutions.
	<b>Plasticair:</b> Laboratory Exhaust Fans. Extensive lines of engineered FRP fans, scrubbers, Perchloric Acid Venturi fans, and high plume dilution fans.
	<b>PoolPak:</b> A leader in providing indoor pool dehumidification for over 25 years.
	<b>Powrmatic:</b> Air turnover units using high volume, low velocity air-circulation to distribute conditioned air to a large open spaces.
	<b>Pro1 Thermostats:</b> Contractor grade and built on the proven performance and reliability that our customers expect.
	<b>Pro-Hydronic Specialties:</b> Offering a full line of Automatic & Manual flow (patented Auto Flow Limiter that can measure flow) devices along with flex hose connectors and steel products with a wide variety of configurations.
	<b>RAE Coils:</b> Their strong focus on quality is evident by products that meets your dimensions, performs according to your specifications, and arrives on time. Their quality control is not a “department,” it is a way of doing business.
	<b>Siemens Control:</b> Open-protocol DDC Controls System with standard Internet access capabilities and full range of DDC Controllers for system configuration flexibility.
	<b>Stulz:</b> Privately owned, global manufacturer of highly efficient temperature and humidity management technology for mission critical applications.
	<b>Superior Radiant Products:</b> an industry leader in the design and manufacture of energy efficient infrared heating solutions and is dedicated to providing superior technology and superior performance.
	<b>Tecogen:</b> Natural gas driven chillers that provide building owners with a reliable, proven, efficient, and cost-effective alternative to conventional electric motor-powered chillers.
	<b>TekWorx:</b> Packaged Central Plant Control Strategies and DDC Interfaces.
	<b>TowerTech:</b> The patented Modular Cooling Tower has been specified by more than a thousand discerning users who demand the greatest process efficiency, reliability, and built-in redundancy.
	<b>TRIATEK:</b> Offers a complete line of building control products that seamlessly integrate with most building automation systems.
	<b>Twin City Fans &amp; Blowers:</b> An industry leading designer and that offers centrifugal fans and blowers, axial fans, and power roof ventilators.
	<b>United CoolAir:</b> Custom unit manufacturer for small product applications, chilled water, DX, heating units. Solutions with indoor condensing units, vertical through-the-wall units, and spot coolers.
	<b>UVDI:</b> Ultra-Violet lamps for commercial and hospital applications where flexibility and optimum cleaning power is required.
	<b>Valent:</b> Manufacturer of high-outdoor air packaged rooftop systems designed to address the needs of building owners, specifying engineers, and installing contractors.
	<b>Viessmann:</b> One of the world’s leading manufacturers of heating, industrial and refrigeration systems.
	<b>WiringPro:</b> Provides OEM quality North American made products that meet and/or exceed OEM’s stringent engineering specifications. These products are CSA and UL approved.
	<b>Yellow Jacket:</b> Top manufacturer of HVAC hoses, tools, refrigeration gauges, manifolds, HVAC vacuum pumps and refrigerant recovery machines



