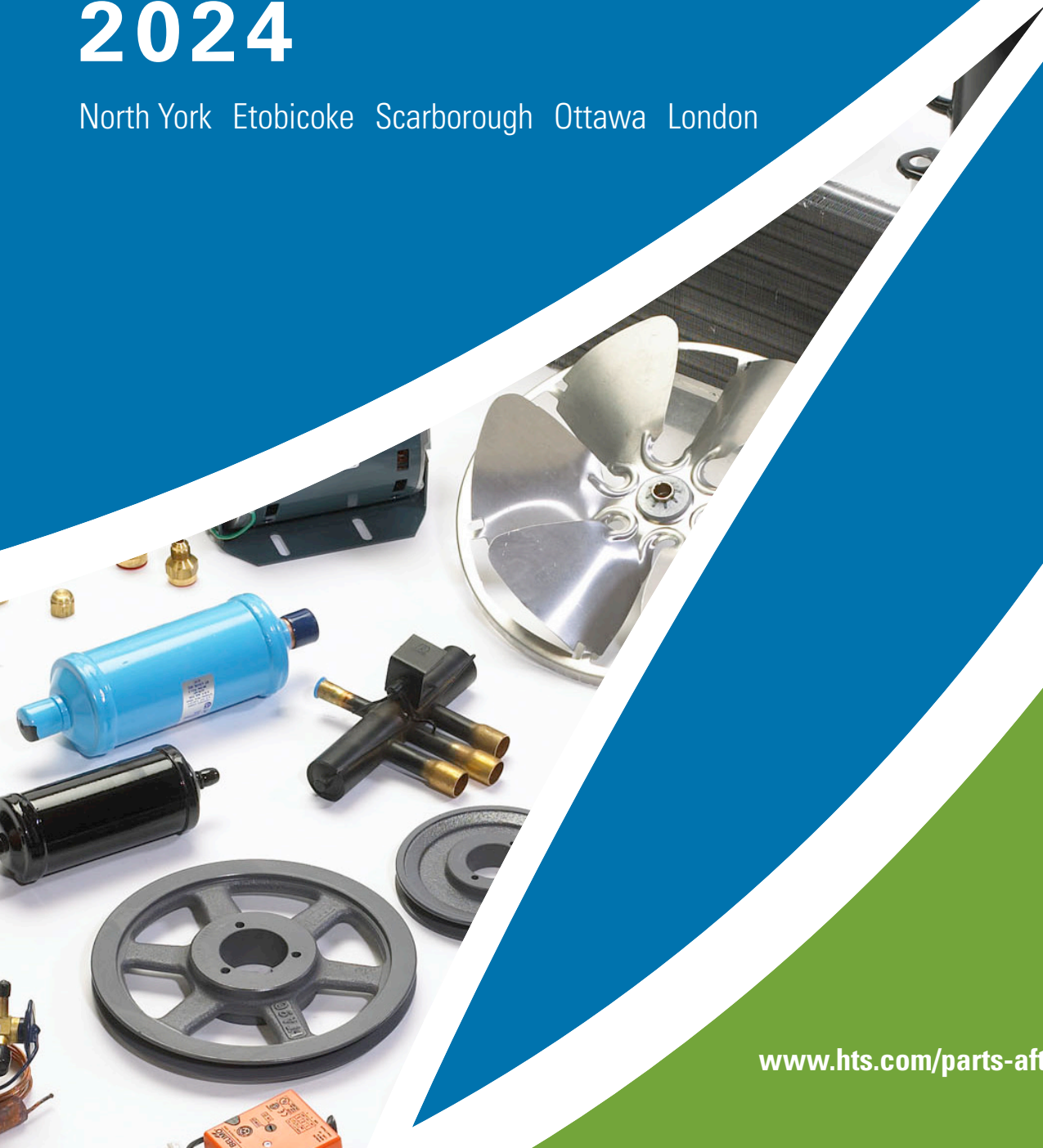




PARTS & AFTERMARKET 2024

North York Etobicoke Scarborough Ottawa London



www.hts.com/parts-aftermarket-ontario



Delivering Real Success®

WE KNOW **PARTS**

The HTS Ontario Parts Department operates with unparalleled customer service and support for the dozens of manufacturers and hundreds of parts we proudly represent. We are problem solvers; we will find the part from any manufacturer that your equipment requires.

As the official Daikin Applied OEM Parts Distributor, HTS offers **competitive pricing and the best trained staff** who are ready to provide timely solutions for our customers' maintenance and repair needs. In addition to accessing hard-to-find parts, we maintain **fully-stocked parts showrooms** in Toronto, Ottawa, London, and Etobicoke.

OUR **PROMISE**

As the parts department, we are committed to the individual success of all those involved in a project's HVAC system selection, design, purchase, installation, and maintenance.

WE MAKE IT **EASY**

Our goal is to help reduce your equipment downtime by providing you with replacement and warranty parts in a quick and timely manner. **Order your parts by calling our direct lines, visiting one of our locations, or by emailing parts@hts.com**

STORE LOCATIONS & CONTACT

North York

555 Oakdale Rd., Unit A
Toronto, ON M3N 1W7

Mon - Fri
7:00 a.m. - 5:00 p.m.
(416) 642-9799

Etobicoke

1571 The Queensway
Etobicoke, ON M8Z 1T8

Mon - Fri
7:30 a.m. - 5:00 p.m.
(416) 642-0176

Scarborough

150 Milner Ave, Unit 15
Scarborough, ON M1S 3R3

Mon - Fri
7:30 a.m. - 5:00 p.m.
(416) 642-2625

Ottawa

830 Campbell Ave, #101
Ottawa, ON K2A 2C2

Mon - Fri
7:30 a.m. - 4:30 p.m.
(613)-728-0118

London

320 Neptune Crescent
London, ON N6M 1A1

Mon - Fri
8:00 a.m. - 4:00 p.m.
(519) 457-1288



01

Introduction

Why HTS?...2
OEM Parts Provider...4

03

OEM Parts

Applied Comfort...6
Napoleon...8
Daikin...9, 12, 18, 28
Omega Heat Pumps...10
Sigma Corporation...13
Schwank...14, 24
Modine...16
SchwankAir...24
PVI...26
Viessmann...27
Loren Cook Company...29
DRISTEEM...30
Nu-Calgon...36

05

General

Line Sheet...54
Locations...55

02

Replacement Equipment

PTACs & Self-Contained Units...6
Fan Coils...9
Heat Pumps...10
Heating...13
Mini Splits & VRV...18
Air Curtains...24
Hot Water Tank...26
Boilers...27

04

Parts

Belts...32
Motors...33
Compressors...34
Service Tools...36
Cleaners & Chemicals...37
Hoses & Accessories...38
Refrigerants...40
Thermostats...41
Electrical...43
Valves...45
Fan Coil Parts...46
UVC Lighting...48



Canada's **LARGEST** supplier
of Daikin Applied OEM parts.



PTACs & Self-Contained Units

ALL
ITEMS IN
STOCK

*Availability varies by location, please call your local store.



Applied Comfort is focused on designing and manufacturing class-leading, high-quality, energy-efficient Packaged Terminal Air Conditioners (PTACs) from OEM chassis specifications with premium components.



DMQ Series

- 32" wide
- Premium component design with digital controls
- Front desk and emergency management system ready
- Switchable to 24V remote thermostat



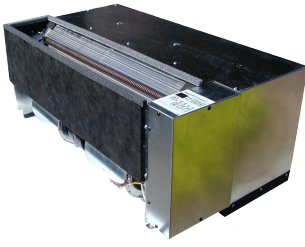
i42 Inverter

- State-of-the-art INVERTER technology fits in standard 16"x42" PTAC sleeves
- Energy savings of up to 30%
- Reduced operation sound levels
- Modulating INVERTER technology ensures consistent dehumidification and highest efficiency



Type K Replacement

- 36", 36.5" wide
- Innovative replacement for all three sections of original legacy chassis
- Class-leading energy performance
- Electronic touch-pad controls switchable to wall thermostat and EMS
- Direct slide-in to existing wall sleeve



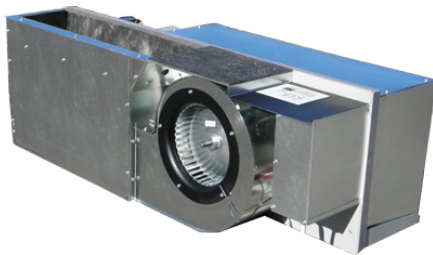
Series 16/AAF/PNES Replacement

- 37.5", 41.5" wide
- Class-leading efficiency
- Quiet operation
- Commercial-duty construction and premium components



Calm 42 Series

- 42" wide
- Universal heater design (U42), fixed-amperage (C42), and innovative INVERTER models (i42)
- Class-leading efficiency
- Quiet indoor sound
- Electronic temperature limiting



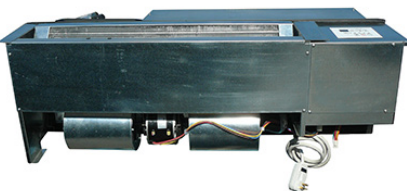
EA Series

- 45" wide
- Commercial-duty, quiet high-static pressure for ducting
- Class-leading efficiency
- Quiet operation
- High-quality performance and premium components
- Easy installation



CDF Series

- Exact Chromalox™ replacements, 44" wide
- Heavy-duty components and materials for superior performance and durability
- High-energy efficiency
- Long reliable service life

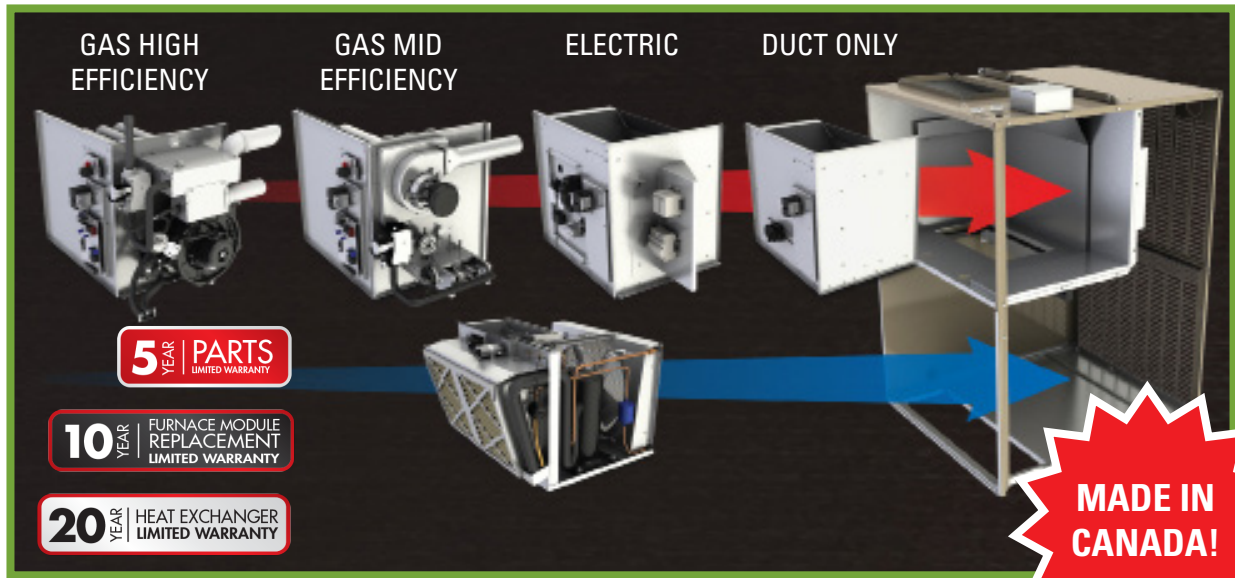


RS Series

- 45" wide
- High-performance design
- Class-leading efficiency
- Quiet operation
- Commercial-duty, durable premium components



Napoleon has led the way with new and innovative, patented technology that continuously surpasses industry standards. The heating and cooling systems are engineered to a high level, and are quiet, efficient, and noticeably comfortable.



Condo Pack - *Built with Confidence for Performance and Efficiency*

Designed for conventional thru-wall installation applications and is the most effective choice with pre-wired and pre-charged dual sliding chassis. The Condo Pack has easy installation and maintenance for both heating and cooling units.

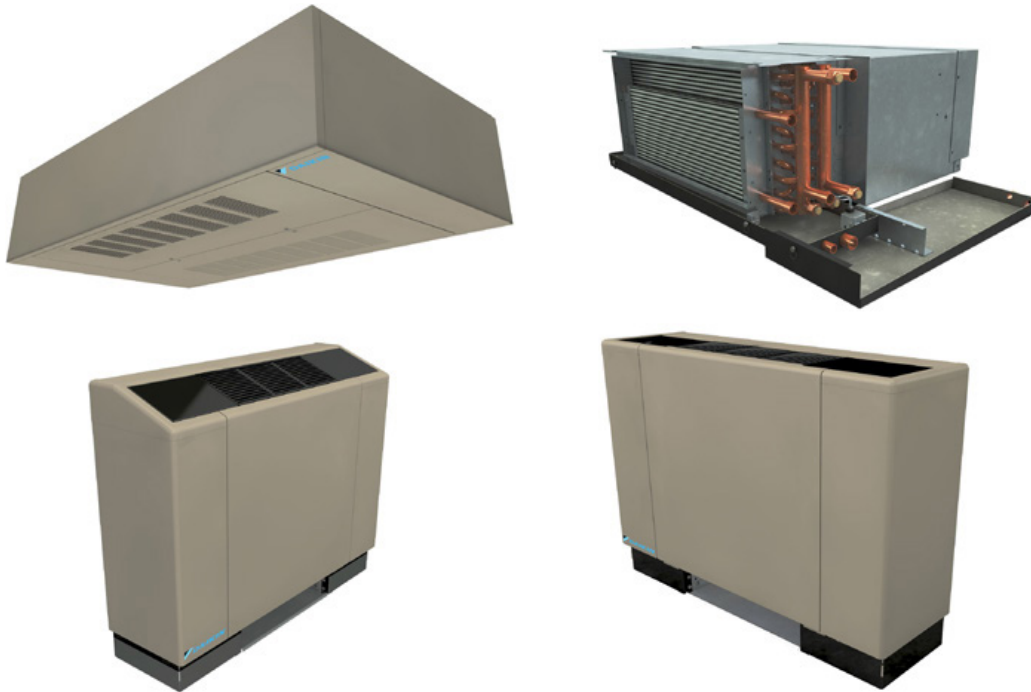
Benefits and Advantages:

- Delivers up to 96.8% AFUE and 90% thermal efficiency
- High performance compressors delivering up to 13 SEER
- Tubular stainless steel primary and secondary heat exchanger
- NEW 11 EER ratings with R-410A refrigerant
- Natural gas or propane
- Blower dynamically balanced with resilient motor mounts for noise reduction and smooth operation
- Independent metering and temperature control
- Direct vent design eliminates the need for a chimney
- Exterior condensate drain for ease of service
- Fully insulated cabinet for clean and quiet operation
- Three piece design allows for individual component handling for easy installation and serviceability
- Wall sleeve (optional) can be installed separately during building framing for easier and cleaner installation
- Entire unit is factory tested before shipment

Fan Coils

ALL
ITEMS IN
STOCK

*Availability varies by location, please call your local store.



OEM PARTS

REPLACEMENT EQUIPMENT

Daikin ThinLine horizontal and vertical units

- **Flexible valve and piping options:** software selectable, factory mounted, and normal closed/open, on/off, modulating (*horizontal and vertical units*)
- **Configuration options:** exposed, concealed, and recessed (*horizontal units*) flat top, sloped top, and hide-away (*vertical units*)
- **Cabinet colors options:** cupola white, off-white, antique ivory, putty beige, soft gray, and custom (*custom horizontal unit only*)
- **Grille options:** stamped or multi-directional outlet grilles, and return grille (*horizontal and vertical units*)
- **Extended end pocket options:** 4" each side or 8" each side (*horizontal and vertical units*)
- **Controller options:** MicroTech® III, 3-speed switch or low voltage, analog or digital t-stat, remote or unit mounted, and 3-speed or staged fan (*horizontal and vertical units*)
- **Electric heat options:** single point power connections, and total or auxiliary heat (*horizontal and vertical units*)
- **Fan motor options:** 4 high-efficiency ECMs, and standard efficiency PSC motor (*horizontal and vertical units*)
- **Primary/secondary drain pan options:** sloped/polymer, easily removable, and noncorrosive plastic or stainless steel (*horizontal and vertical units*)
- **Coil options:** (*horizontal and vertical units*)
 - 2, 3, or 4-row main
 - 1 or 2-row preheat or 1-row reheat
 - Hot water or steam
 - Same or opposite end connections
 - Multiple circuit selections

Heat Pumps

ALL
ITEMS IN
STOCK

*Availability varies by location, please call your local store.



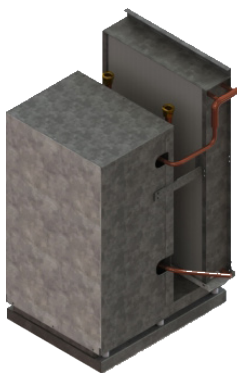
REPLACEMENT PARTS
ALSO AVAILABLE

Omega Heat Pumps provides all in one heating and cooling solutions for residential and commercial applications. Founded in 2006, the company continues to expand its product offering to meet the rigorous requirements for green, quiet, and comfortable heating and cooling.



Omega HRP Series (Enerzone Replacement)

- ¾ tons - 2 ½ tons
- OEM replacement for true form, fit and function
- Comes standard with High and Low pressure safety switches, and water coil freeze protection
- Each unit is factory tested and charged with R-410A refrigerant
- Optional auto shut-off control valve to disable water flow through the unit when there is no call for compressor
- Optional auto-flow balancing valves for maintaining nominal water flow rate through unit



Omega VI (Whalen Replacement)

- ¾ tons - 2 tons
- Plug-n-play matching power and control harness connections for quick installation
- Double isolated compressor base and high efficiency R-410A compressors for quiet operation
- High and low pressure safety switches standard on all models
- Thermostatic Expansion Valve (TXV) for accurate refrigerant metering
- Optional auto shut-off control valve to disable water flow through the unit when there is no call for compressor
- Optional auto-flow balancing valves for maintaining nominal water flow rate through unit



Omega 816 (Climate Master Replacement)

- ¾ tons - 3 tons
- "M" control option comes with matching 9 pin harness to mate with existing ClimateMaster "M" controls
- Omega electrical package kit mounted in electrical box and replacing all controls with new controls including a full featured advanced microprocessor controller





HCA Series (McQuay Replacement)

- ¾ ton - 2 tons
- Complete electrical box kit with full featured advanced microprocessor controller to replace existing electrical box and all controls
- High and low-pressure safety switches, entering and leaving water temperature sensing for pre-emptive detection of water flow issues, and condensate overflow switch comes standard
- Each unit is factory tested and charged with R-410A refrigerant
- Optional auto shut-off control valve to disable water flow through the unit when there is no call for compressor
- Optional auto-flow balancing valves for maintaining nominal water flow rate through unit



VF Series (Replacement for Singer/McQuay Series VF/VP/VG Units)

- ¾ ton - 3 tons
- Each unit comes with R410A refrigerant and is fully factory tested before shipment
- Easy monitoring of controller board LED display status and quick diagnostic fault detection
- Advanced microprocessor controller continuously monitors operation of the unit for fault-free start-ups and optimal operation
- Optional auto shut-off control valve to disable water flow through the unit when there is no call for compressor
- Optional auto-flow balancing valves for maintaining nominal water flow rate through unit

**NEW
PRODUCT!**



VSCS Series (Johnson Controls Replacement)

- ¾ tons - 2 ½ tons
- Direct replacement and upgrade for the Johnson Controls VSCS chassis units
- High and low pressure safety switches, water coil freeze protection, and double isolated compressor base
- Optional auto shut-off control valve to disable water flow through the unit when there is no call for compressor
- Optional auto-flow balancing valves for maintaining nominal water flow rate through unit

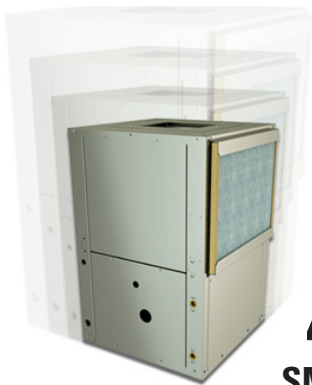


Daikin designed the first complete line of water source heat pumps with high efficiency, outstanding reliability, and quiet operation for individually zoned comfort control in commercial, institutional, and industrial buildings.



Infinity™ Console In-Room

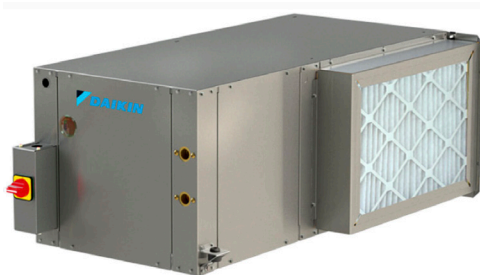
- 1/2 ton - 1.5 ton
- Models MHC and MHW
- R-410A refrigerant
- Exceeds ASHRAE 90.1 efficiency standards by up to 35%
- High efficiency reduces energy consumption and operating costs



**48%
SMALLER**

Smartsource® Compact Vertical Water Source

- 1/2 ton - 6 ton
- Model GCV
- Small footprint for easy replacement of most WSHPs
- Dehumidification for increased occupant comfort
- Low operating costs, easy installation, and quick serviceability



Smartsource® Compact Horizontal Water Source Heat Pump

- 1/2 ton - 6 tons
- Model GCH - Single Stage

Heating

ALL
ITEMS IN
STOCK

*Availability varies by location, please call your local store.



Sigma Corporation is a manufacturer of commercial and industrial HVAC equipment including Wallfin, Convectors, Propellorized Unit Heaters, Cabinet Unit Heaters, Valance/Radiant Ceiling Heating and Cooling Products. In addition to industry-standard items, their 34,000 sq. ft. manufacturing facility in Mississauga, Ontario is optimized for quality flexible manufacturing to meet nearly any specification.



SUH Unit Heaters

- Horizontal and vertical propeller unit heaters feature a wide performance range for both hot water and steam applications
- Side entry coil connections on model H units permit installation in clearance-critical low ceiling environments
- Special coils constructed with 0.032" wall Cu-Ni tubes or 0.049" wall copper
- Designed for maximum airflow and optimum air distribution, outlet temperatures are reduced and avoid "hot spots"
- Standard units have 12 FPI fin series for enhanced performance
- Equipped with horizontal louvers for simple vertical air distribution adjustment
- Optional louver fin diffusers permit enhanced air distribution adjustment with either a wide spread of warmth or focused warm air for greater unit throw

OEM PARTS

REPLACEMENT EQUIPMENT

Schwank is the world leader in infrared radiant heating. They've sold over 2 million units to more than 150,000 customers in 40 countries because they deliver exceptional energy savings, product quality, environmental performance and service and support. As a result, modern Schwank infrared heating is replacing conventional forced air and hydronic heating systems the world over.

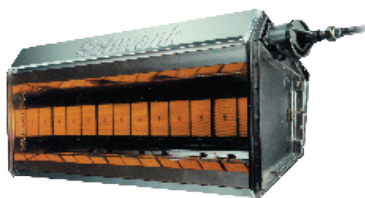
High-Intensity Heaters



supraSchwank



- The most efficient industrial and commercial radiant heater with up to 65% energy savings
- Fuel: NG/LP
- Mounting: Ceilings up to 180 feet
- 81% Radiant efficiency
- Heater Models[input/length (inches):
 29,500 BTU/h - 23.87" 59,000 BTU/h - 45.75"
 44,000 BTU/h - 34.60" 88,500 BTU/h - 67.50"
 118,000 BTU/h - 45.75"



primoSchwank



- Powerful and energy efficient specifically for industrial and commercial spaces
- Fuel: NG/LP
- Mounting: High ceilings up to 180 feet
- 68% Radiant efficiency
- Heater Models input/length (inches):
 37,500 BTU/h - 23.75" 75,000 BTU/h - 45.62"
 56,000 BTU/h - 34.50" 113,000 BTU/h - 67.32"



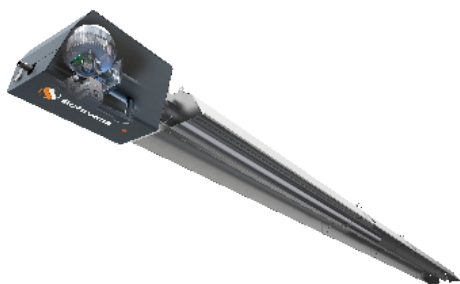
ecoSchwank

- Efficiency, economy, and performance for industrial and commercial use
- Clean and efficient radiant heaters with 52% Radiant Efficiency
- Mounting: Ceiling from 12-70 feet
- Heater Models input/length (inches):
 21,500 BTU/h - 24" 65,000 BTU/h - 36.33"
 35,000 BTU/h - 30.25" 100,000 BTU/h - 63.75"
 50,000 BTU/h - 38.50" 143,000 BTU/h - 49.50"
 200,000 BTU/h - 64.75"

Infrared Radiant Tube Heaters

OEM PARTS

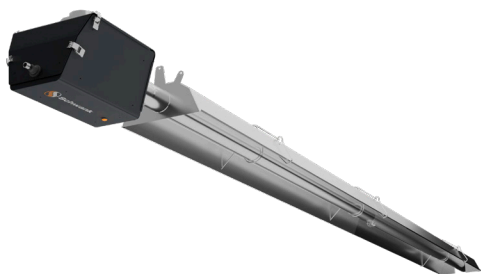
REPLACEMENT EQUIPMENT



superTube® SST Series



- Provides higher BTUs and a larger coverage area
- Fuel: NG/LP 1-Stage, 2-Stage, and Modulating
- BTU/HR: 50,000-250,000 input
- Tube Length: 20' – 80'
- Built with an EC Motor
- Mounting: Ceilings up to 50 feet



superTube® Extreme Series



- Extreme weather, extreme conditions, and environments
- Fuel: NG/LP 1-Stage & Modulating
- BTU/HR: 50,000-250,000 input
- Tube Length: 20' – 80'
- Built with an EC Motor
- Models: SST-X, SST-S, SST-Z available in Straight, U-Tube



ultraSchwank Series



- Ceramic insulated reflector
- Fuel: NG Only - 1-Stage
- BTU/HR: 60,000-200,000 input
- Tube Length: 20' – 70'
- Ceiling mount up to 50 feet



builderSchwank (S100 / S100U)

- Model: Straight, U-Tube, and L-Shaped
- Fuel: NG/LP 1-Stage & 2-Stage
- BTU/HR: 45,000-200,000 input
- Tube Length: 20', 30', 40', 50', 60', and 70'
- U-Tube Length: 10', 15', 20', 30'
- Line voltage and 24-volt thermostat ready



premierSchwank (STS)

- Model: Straight, U-Tube, and L-Shaped
- Fuel: NG/LP 1-Stage
- BTU/HR: 45,000-200,000 input
- Tube Length: 20', 30', 40', 50', 60', and 70'
- 24 or 120 Volt control options
- Pre-installed igniter and status indicator lights



Modine Manufacturing Company has led the way in thermal management since 1916 designing, manufacturing, and testing heat transfer products for a wide variety of applications and markets.

Natural/Propane Gas Unit Heaters

Hot Dawg Low Profile Unit Heater (HD/HDB)



- Input ranges from 30,000 to 125,000 BTUs and can operate on natural or propane gas
- Ideal for residential garages and workshops, along with light commercial or industrial applications
- Hush-puppy quiet operation
- 115V, 16 hertz, single phase
- Lightweight, easy installation 1" from ceiling

Separated Combustion (PTS/BTS, HDS/HDC)



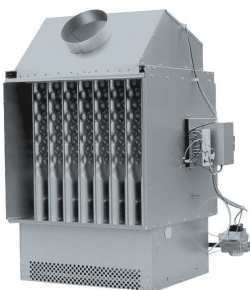
- Input ranges from 30-125 MBH and can operate on natural or propane gas
- Specifically designed for environments with hostile atmospheric conditions, such as chemicals, high humidity or negative pressure
- Swept wing fan on sizes from 100,000 to 200,000 BTU/hr for superior airflow and noise reduction
- Same-size vent and combustion air inlets throughout product line makes installation easier
- Longer allowable vent lengths (up to 50' vs 30')

Vertical Power Vented (PDP/BDP)



- Input ranges from 150,000 to 400,000 BTU/hr
- The PDP (propeller) and BDP (blower) High Efficiency II gas-fired unit heaters are inexpensive to install, easy to use, and offer excellent in-service economy
- 80% thermally efficient, maximizing seasonal efficiency
- Power exhaust can be rotated 180°, can be vented vertically or horizontally
- Safety-pressure switch to assure safe venting conditions

Duct Furnaces



Indoor Gravity Vented (DFG) - ETL certified

- Input ranges from 75,000 to 400,000 BTU/hr and can operate on natural or propane gas
- Designed to be an *economical* choice for use with a building's heating, heating/cooling, and make-up air systems
- 80% thermally efficient
- Blocked vent safety switch
- 115V control step down transformer with 24V gas controls
- 20 gauge aluminized steel cabinet
- Certified to 3.0" W.C. external static pressure
- Right side access to burner and gas controls with slide-out burner drawer



Outdoor Duct Furnace (HFG/HFP)

- Input ranges from 75,000 to 400,000 BTU/hr and can operate on natural or propane gas
- Designed for use with a building's heating, heating/cooling, and make-up air systems
- All units a minimum of 80% thermally efficient
- 115V control step down transformer with 24V gas controls
- 18 gauge aluminized steel cabinet with a baked-on polyester powder finish on exterior casing parts
- Certified to 3.0" W.C. external static pressure



Indoor Separated Combustion (DFS) - ETL certified

- Input ranges from 75,000 to 400,000 BTU/hr and can operate on natural or propane gas
- Designed for use with a building's heating, heating/cooling, and make-up air systems with hostile atmospheric conditions, such as high humidity or negative pressures
- All units a minimum of 80% thermally efficient
- 20 gauge aluminized steel cabinet
- Certified to 3.0" W.C. external static pressure
- Separate electrical, venting, and gas control access with fully gasket-installed doors

Mini Splits & VRV

ALL
ITEMS IN
STOCK

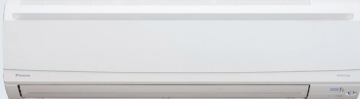




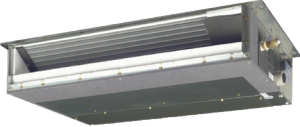
*Availability varies by location, please call your local store.



Daikin Single-Zone Outdoor Units

REPLACEMENT EQUIPMENT

OEM PARTS

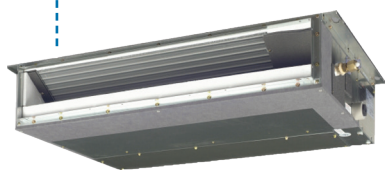
Indoor Units	RK (Cooling Only)	RX (Heat Pump)	RXL (Aurora Low Ambient Heating Down to -13)
 (Wall Mounted FTX series 9,000 to 36,000 BTU/h)	✓	✓	✓
 (Ducted FDM series 9,000 to 36,000 BTU/h)	✓	✓	✓
 (Floor Standing FVX series 9,000 to 15,000 BTU/h)			✓
 (Ceiling Cassette FFQ VISTA series 9,000 to 18,000 BTU/h)	✓		
 (EMURA Wall Mounted FTXR series 9,000 to 18,000 BTU/h)	✓		
 (Slim Ducted FDX series 9,000 to 24,000 BTU/h)	✓		



Daikin Multi Zone Outdoor Units

Outdoor Units	Available Options
MXS18NMVJU (1.5 tons)	2 ports
MXS24RMVJU (2.0 tons)	3 ports
MXS36RMVJU (3.0 tons)	4 ports
MXS48TVJU (4.0 tons)	5 ports and 8 ports
AURORA (Low Ambient heating down to -13)	
MXL18QMVCJU (1.5 tons)	2 ports
MXL24RMVCJU (2.0 tons)	3 ports
MXL36TVJU (3.0 tons)	4 ports

Other indoor units available:



FDXS/CDXS

UP TO 5 INDOOR UNITS



5MXS



CTXS/FTXS



FFQ

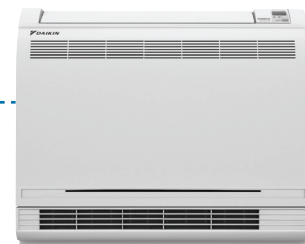
EMURA



FTXR



FDMQ



FVXS

OEM PARTS

REPLACEMENT EQUIPMENT

Daikin VRV system is a multi-split type air conditioner for commercial buildings that uses variable refrigerant flow control developed by Daikin to provide customers with the ability to maintain individual zone control in each room and floor of a building.

VRV IV



Heat Pump

- Total comfort solution for heating, cooling, ventilation, and controls
- Energy efficiency values (IEER) up to 28.0
- Incorporates VRV IV standards and technologies such as variable refrigerant temperature and all inverter compressors
- Best-in-class warranty* with 10-year compressor and parts limited warranty as standard

VRV IV - S



Air-Cooled

- Available in 3, 4 and NEW 5 ton modules
- Increase in efficiency up to 18 SEER & 10.5+ HSPF
- Year round comfort and energy savings delivered by VRT technology
- Broader diversity with ability to connect up to 9 indoor units
- Space saving design with under 39" height. Over 25% smaller as compared to VRV III-S
- Easier to install with over 39% weight reduction vs. VRV III-S
- Low sound levels for comfort
- Higher reliability with Daikin's swing compressor
- Dependable operation in extreme ambient conditions up to 122°F
- Added safety and peace of mind with optional auto changeover to auxiliary heat
- Backed by a best in class 10-Year Parts Limited Warranty*

VRV Aurora



VRV AURORA Heat Pump and Heat Recovery

- VRF industry's first air-cooled system that delivers heating capacities down to -22°F (-30°C) as standard
- Daikin's inverter based vapor injection compressor is designed to deliver heating capacity of up to 100% of nominal at 0°F (-18°C), up to 85% of nominal at -13°F (-25°C) and up to 60% of nominal at -22°F (-30°C)
- Year round comfort and energy savings with Variable Refrigerant Temperature technology (VRT)
- Refrigerant-cooled efficient and stable inverter board operation, independent of ambient conditions
- Heat recovery models designed to provide continuous heating during defrost and oil return

VRV IV X



Heat Recovery

- Fully integrated solution with heat recovery offers high efficiencies with IEER values up to 29.3
- Perfect personal comfort for guests/tenants via simultaneous cooling and heating
- Total comfort solution for heating, cooling, ventilation, and controls
- Perfect personal comfort for guests/tenants via simultaneous cooling and heating
- Incorporates VRV IV standards and technologies such as Variable refrigerant temperature and all inverter compressors
- Unique range of single and multi-port branch selector boxes
- Heating function down to -13°F ambient air temperature
- Daikin VRV IV is the first variable refrigerant flow (VRF) system to be assembled in North America
- Space-saving with ability to connect multiple gas furnaces to one outdoor unit with 14 selectable settings

**Complete warranty details available from your local HTS representative or online at www.daikincomfort.com*

VRV IV**VRV T-Series Water Cooled Condensing Unit Heat Pump/Heat Recovery**

- Flexible System design with increased diversity up to 150%
- Can be applied to both geothermal and boiler/tower applications as standard with condenser water inlet temperature as low as 14°F in heating and 23°F in cooling is possible
- Triple-stack capable to deliver up to 36 tons in just under 10.5 feet ceiling height thanks to the compact design
- Engineered with heat rejection cancellation technology to eliminate mechanical room conditioning requirements
- 2-9V variable water flow control logic as standard to increase waterside system operational efficiencies
- Drop-down switch box for easy service to key components
- Field selectable top or front refrigerant connections for flexible and easy installation

VRV Fit**VRV Fit**

- The Daikin Fit system is a side discharge, smart HVAC system that won't compromise on comfort and connects to ducted solutions traditional to the unitary market.
- Perfect alternative to the traditional cube style unitary products in a 1:1 application
- Install using existing ductwork and existing line sets
- Space-saving low profile trunk style outdoor unit for easy carrying and installation in tight spaces
- Inverter (variable-speed) Compressor for Ideal indoor comfort and efficiency
- Quiet-mode provides enhanced acoustical comfort
- Blue Fin Coat for long condenser coil life and reliability

VRV Life

VRV Life

- Precision engineered for flexibility, zoning, low sound and space saving, with the ability to mix and match ducted and duct-free indoor units in combination with a gas furnace.
- Ability to choose heat pump or multi-zone Dual-Fuel² heating capability
- Auto and programmable modes for heat pump to gas heat switch over temperatures
- Compatible with 12 types and 65 models of Daikin VRV indoor fan coil units and 80 – 97% AFUE Daikin up flow and down flow communicating gas furnaces
- Dependable heat pump operation in extreme ambient conditions down to -4°F in heating mode and up to 122°F in cooling mode
- Year-round comfort and energy savings delivered by combining VRV and VRT technologies compared to traditional split systems
- Operation with sound levels of under 58 dbA1 make for easy install close to lot lines
- Engineered with Daikin's swing Inverter compressor technology

OEM PARTS

REPLACEMENT EQUIPMENT



**Complete warranty details available from your local HTS representative or online at www.daikincomfort.com*

Air Curtains

ALL
ITEMS IN
STOCK

*Availability varies by location, please call your local store.

Schwank Air Curtains create an effective seal by re-circulating the facility air in a smooth laminar flow across an open doorway. This creates an air seal, that prevents leakage of air between two areas with different pressure and climate, and repels insects, or dust. Enbridge Incentives available!

REPLACEMENT EQUIPMENT

OEM PARTS



Select10 Series Air Curtain

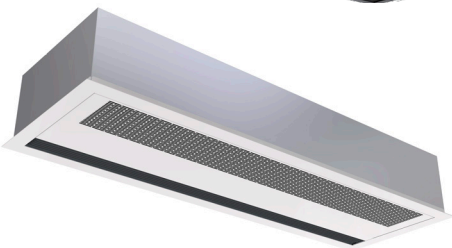
- Available in ambient and electric heated models for commercial entranceway
- 208V~230V~1P, 208V~3P, 480V~3P, 600V~3P models
- Mounting: Flexible Up to 10'
- Built with EC Motor for energy-efficiency and variable speed control
- Easy Installation: Includes wall mount brackets, unit-mounted controller, and wireless remote controller with a door switch



Select12 / 12R Series Air Curtain



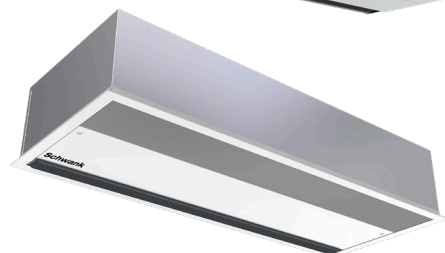
- AMCA certified for sound and performance
- Available in ambient, electric heated, and hot water surface or recessed models. Mounting: Up to 12'
- 208V~1P, 208V~3P, 480V~3P, and 600V~3P models
- Available in 36", 60", and 72" models
- Energy-efficient EC Motor with variable speed control
- Quietest Model Sound Rating: 54dB – 57dB
- Easy Installation: Includes wall mount brackets, unit-mounted controller, and wireless remote controller with a door switch



Select14 / 14R Series Air Curtain



- AMCA certified for sound and performance
- Available in ambient, electric heated, and hot water surface or recessed models. Mounting: Up to 14'
- 208V~1P, 208V~3P, 480V~3P, and 600V~3P models
- Available in 36", 60", 72", and 96" models
- Horizontal and vertical, surface or recessed-mounted models
- Energy-efficient EC Motor with variable speed control
- Quietest Model Sound Rating: 62dB – 65dB
- Easy Installation: Advanced wall mounted hard-wired controller, temperature sensor (only heated models), controller module, with a door contact switch



Commercial / Industrial Air Curtains



Epic 14 Series



- Available in ambient and electric heated models for industrial spaces. Mounting: Flexible Up to 14'
- 208V~1P, 208V~3P, 480V~3P, 600V~3P models
- Built with EC 1HP Direct Drive Motor
- Configurable controls with adaptive time overrun for busy periods, stepless speed control, and auto speed control. All from a 4.3" touchscreen
- BMS integration available (BACnet IP)
- Smooth wrap design, available in custom colors



Swift 5 Series

- Air curtain for small openings & drive-thru windows
- Available in 208V~1P models
- Mounting: Up to 5'
- All units are electric-heated models
- Available in white or black color finish
- Built-in control with 3-speed settings



Breeze9 Series

- Available in ambient models (no heat)
- 120V plug & play models with a convenient plug and 4' cord
- Door Heights: Up to 9'
- Includes wall mount brackets, wireless remote control and door switch



Breeze8/ Breeze 10 Series

- Available in ambient, electric, and water models
- 208V~1P, 208V~3P, 480V~3P, and 600V~3P models
- Door Heights: Up to 10'
- All units are available in surface or recessed mounted
- Includes wall mount brackets, wall mounted hard-wired controller and door switch



Hot Water Tank

ALL
ITEMS IN
STOCK

*Availability varies by location, please call your local store.



PVI specializes in medium to large capacity ASME water heaters for commercial and institutional buildings, including schools, hotels, hospitals, dormitories, apartments, correctional facilities and military barracks.



CONQUEST® Condensing Gas Water Heater

CONQUEST is a small footprint, fire tube, condensing storage water heater featuring a submerged combustion chamber and spiraled array of fire tubes fabricated entirely from AquaPLEX.

- 199 - 250 - 299 MBTU in a 100 gallon tank
- 399 - 500 - 600 - 700 - 800 MBTU in a 130 gallon tank
- Up to 97% thermal efficiency from 40° F to 140° F at full rate (4.44° C to 60° C)
- Part load efficiency up to 99% with modulating models
- Meets ASHRAE 90.1
- Heaters qualify for LEED certification
- Natural gas or LP gas
- Touch-screen operating control with plain text status and fault diagnostics



Tank and heat exchanger are constructed from AquaPLEX duplex stainless steel. Naturally immune to aqueous corrosion, the heater requires no tank linings or anode protection of any type.



NSF 5
NSF 372 lead-free



ASHRAE 90.1 - 2013 compliant
SCAQMD compliant



Intertek



AquaPLEX tank and heat exchanger come with a 15 year warranty. Tank warranty covers leaks, production of discolored/rusty water, chloride stress corrosion cracking, condensate corrosion or defects in material or workmanship. **One-year parts warranty.**



Boilers

ALL
ITEMS IN
STOCK

*Availability varies by location, please call your local store.



Viessmann offers an innovative heating solution to meet the requirements of any application with a complete line of high-efficiency oil and gas-fired boilers, solar thermal systems, advanced biomass heating and control technology. Whether as a fully-integrated system or single-energy installation, our products deliver maximum energy savings and performance.

Whether the project is a new construction or retrofit, single-family home or district heating network, Viessmann has an ideal solution.



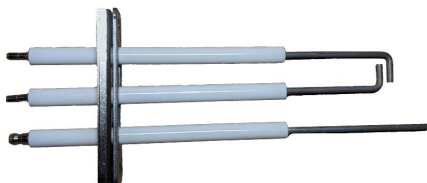
Vitodens 200-W, Cascade Systems

- Single or multi-boiler operation, 60-4240 MBH
- Flexible installation: floor standing corner, or back to back
- Common venting for up to four boilers

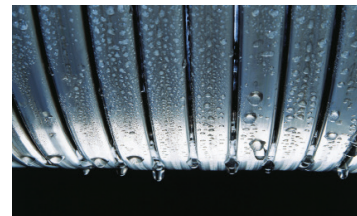


Vitocrossal 300, CA3B

- Thermal efficiency of up to 96%
- Single or multiple boiler operation, 300-48,000 MBH
- Common venting for up to four boilers



Ignition Electrodes and Ionization Electrode



Stainless steel Inox-Radial heat exchanger



OEM PARTS

REPLACEMENT EQUIPMENT

Variable Frequency Drive (VFD)

*Availability varies by location, please call your local store.



Why Daikin VFDs are a smart choice

- Easy-to-use advanced HVAC controls
- Competitive pricing while covering nearly all HVAC applications through two-tier offering
- Same-day shipping on in-stock VFDs
- Quick ship options available on non-stocked VFDs
- Embedded serial communications standard

Applications

Daikin VFDs can be added to most motor and pump applications to reduce energy costs during low demand periods of your HVAC system. Daikin VFDs are designed and tested for use with a variety of HVAC system components.

- Rooftop units
- Air handling units
- Chilled water pumps
- Heating water pumps
- Cooling water fans
- Condenser water pumps



Utilize Daikin Variable Frequency Drives to increase your HVAC system performance and save on energy costs.

OEM Parts

ALL
ITEMS IN
STOCK

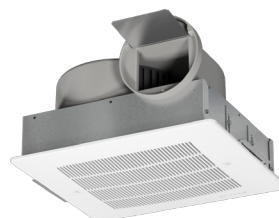
*Availability varies by location, please call your local store.



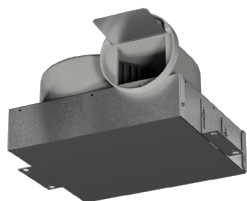
COOK

Loren Cook Company Gemini fans provide maximum performance, durability, and ease of installation in a wide variety of ceiling (GC) and inline (GN) clean air exhaust applications, as well as field convertible. There is a range of sizes with direct drive motors, in either single or double wide construction.

Size: 126 - 188



GC

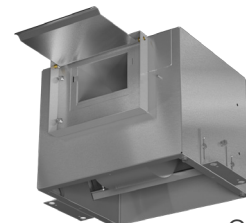


GN

Size: 222 - 740



GC

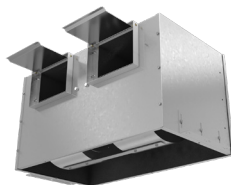


GN

Size: 822 - 960



GC

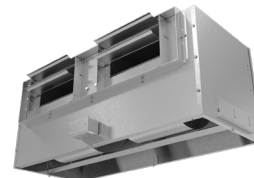


GN

Size: 1000 - 2000

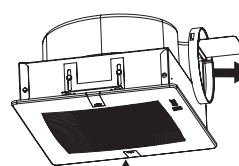


GC

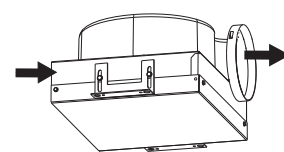


GN

GC & GN GEMINI ROOM EXHAUSTS		SIZE	MAX. CFM	MAX. SP	24hr	ENERGY STAR
Ceiling	GC	126 - 188	260	1"	✓	✓
Inline	GN					
Ceiling	GC	222 - 740	850	1"	✓	✓
Inline	GN					
Ceiling	GC	822 - 960	1,800	1"	✓	
Inline	GN					
Ceiling	GC	1000 - 2000	3,400	1"	✓	
Inline	GN					



Ceiling (GC)



Inline (GN)

24hr = 24 Hour Express



= ENERGY STAR® Certified

Quality Tested

Made in the USA in an **ISO 9001** certified factory. Tested in COOK's **AMCA** registered laboratory in accordance with AMCA standards.

GC sizes 128, 222 & 242 are **ENERGY STAR®** certified products. All units are listed by **Underwriters Laboratory (UL 705)** and UL listed for Canada (cUL 705). GC and GN 126-188 are UL 507 and cUL 507 listed.

GN sizes 200 through 2000 series units are available with **UL 1995** listing (Heating & Cooling Equipment) and cUL 1995 listing for Canada. When a Gemini 200-2000 unit is supplying a separate modular cooling or heating source, UL 1995 listing may be required by local code.



DRISTEEM designs and manufactures humidification systems to meet unique humidification requirements. DRISTEEM has earned a reputation as the humidification experts by supporting customers' unique commercial, healthcare, industrial, and process-critical applications for more than 50 years.



XT Series Electrode Humidification System

- Vapor-logic® 4 controller included with Model XTP and optional ModBus®, BACnet®, and LonTalk® interoperability
- Model XTP capacity range from 5 to 287 lbs/hr (2 to 130 kg/h) and Model XTR capacity range from 5 to 11 lbs/hr (2 to 5 kg/h)
- Control to $\pm 3\%$ RH
- Designed for easy installation and minimal maintenance



GTS® Humidifier LX Series

- Condensing design provides for highest efficiency and PVC venting
- Ultra-low NOx and high efficiency in a single design
- Modulating output with minimum 5:1 turndown for accurate humidity control
- Universal water control for use with any water type
- Outdoor and indoor models for application flexibility



STS® Steam-to-Steam Humidification System

- Vapor-logic® 4 controller with: web-enabled remote access, BACnet®, and LonTalk® interoperability
- Capacity range up to 1600 lbs/hr (726 kg/h)
- Control to $\pm 3\%$ RH
- Electronically monitored water level ensures safe and reliable operation
- Ultra-sorb Model XV dispersion option

Parts and Accessories

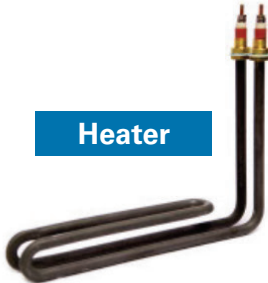
Solenoid



Probe



Heater



Flame Rod



HSI



Bottle*



Controller



Vapor-logic® Controller

- Provides comprehensive control for DriSteem GTS®, STS®, Vaporstream®, Vapormist®, Humidi-tech®, CRUV®, and XT series
- Multi-color status LEDs to speed up troubleshooting
- Additional LED shows if power is available to the keypad and display

Humidifier De-Scaling Solution & Pump Kit

Why do I need this? Scale buildup on humidifier heaters and heat exchangers acts as an insulator, reducing humidifier performance while increasing energy costs.

- **De-Scaling solution** removes scale more thoroughly than hand-scraping, and does not corrode the water tank, components, or welds.
- **De-Scaling neutralizer** is added to the water tank following the de-scaling process to bring water back to normal pH levels.
- **De-Scaling pump kit** greatly increases the effect that the de-scaling solution has on mineral deposits in the water tank, making the process quicker and easier.



Belts

ALL
ITEMS IN
STOCK

*Availability varies by location, please call your local store.



Gates Corporation is a leading manufacturer of application-specific fluid power and power transmission solutions. Gates is driven to push the boundaries of material science to engineer products that continuously exceed expectations.



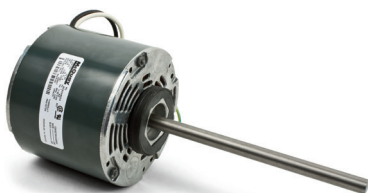
PARTS

Motors

ALL
ITEMS IN
STOCK

*Availability varies by location, please call your local store.

If you need it, we can supply it - not limited to *only* OEM motors.



Single-Phase Multi-Voltage PSC, Double-Shaft

- Direct drive motor
- Thermally protected, UL recognized, CSA and cUL certified
- **Application:** air moving (furnace fans, air handlers, blowers, air conditioners, exhaust fans, etc.)



Electronically Commutated Motors (ECM), Preprogrammed for Unit Ventilators

- Preprogrammed for direct factory replacement
- Select appropriate motor based on unit characteristics
- 20-30% more efficient than traditional PSC motors
- **Application:** air moving (Unit Ventilators and Water Source Heat Pumps)



Premium Efficient, Three-Phase, ODP, with AEGIS SGR Protection

- General purpose motor
- Ball bearings; heavy-duty steel or cast-iron frames
- Class F insulated motor with 1.15 service factor or higher that operates within Class B temperature limits at rated horsepower
- **Application:** fans, blowers, machine tools, energy savings where continuous or frequent duty is required

PARTS

Compressors

ALL
ITEMS IN
STOCK

*Availability varies by location, please call your local store.

Scroll Compressors

Copeland[™]
brand products

Copeland Compressors are trusted by HVAC/R professionals worldwide for efficient, reliable performance and breakthrough innovation.



ZP, Single & Three Phase

- Designed for superior R-410A efficiency and performance
- Light compact design with smaller suction fitting
- Features advanced scroll temperature protection to guard from the scroll overheating
- Unmatched reliability

Uneven Tandem, Three Phase

- Reduced compressor on/off cycling
- Higher part-load efficiency
- Better system performance
- Unmatched reliability

Rotary Compressors



Tecumseh

Tecumseh high efficiency rotary compressors provide enhanced reliability, reduced sound and maximum flexibility with vertical and horizontal installation options for air conditioning and refrigeration applications.



RK, Single Phase

- 5,000 to 13,000 BTU/h
- Efficient and reliable rotary mechanism
- Low noise level
- Integrated accumulator
- Three-point mounting

HG, Single Phase

- 5,000 to 13,000 BTU/h
- Efficient and reliable rotary mechanism
- Low-profile horizontal design
- Low noise level
- Integrated accumulator

Rotary Compressors



LG Compressors provide meaningful and differentiated values to customers sustainability by achieving the world class eco-friendly & energy saving technologies.



QJ, Single Phase

- Reduced compressor on/off cycling
- Higher part-load efficiency
- Better system performance
- Unmatched reliability

QA, Single Phase

- Designed for superior R-410A efficiency and performance
- Light compact design with smaller suction fitting
- Features advanced scroll temperature protection to guard from the scroll overheating
- Unmatched reliability

Hermetic Compressors



Bristol Compressors International, LLC is committed to environmentally conscious, energy-efficient products with ozone-friendly refrigerant compressors that use fixed- and variable-frequency drive configurations.



H22J Model, Single & Three Phase

- High efficiency
- Low sound
- Solder suction fittings: 90° elbow
- Solder discharge fittings: straight

H2BG Model, Three Phase

- Reliable design
- Low compressor height
- Solder suction fittings: straight
- Solder discharge fittings: straight

Service Tools

ALL
ITEMS IN
STOCK

*Availability varies by location, please call your local store.



4 Piece Heavy-Duty Nut Driver Set

- Through-handle, full-hollow shaft for torquing hex nuts onto threaded rod of any length
- Wrench-assist for additional torque
- Rare Earth magnetic tip holds nut in place while fastening
- Heavy duty handles and shafts exceed torque performance of regular nut drivers
- Includes 1/4", 5/16", 3/8" and 7/16" hex sizes



Mini Cushion-Grip Screwdriver Set

- Includes one Phillips-tip, one keystone-tip, and two cabinet-tip screwdrivers
- Tip-Ident® quickly identifies the type of screwdriver and tip orientation
- Precision tips for an exact fit and rigorous applications
- Premium chrome-plated shafts for corrosion resistance



Tradesman Pro™ Backpack

- 39 pockets for tons of tool storage
- Hard, molded front pocket protects safety glasses
- Front zipper pocket for small parts and tools
- Taller bag and interior pockets allow for long screwdrivers
- Fully molded bottom protects from the elements
- 1680d ballistic weave for durability
- Shoulder straps with extra padding and handles for easy carrying



600A AC Clamp Meter with Temperature

- 600V AC Current, 600V AC Voltage, 600V DC Voltage
- Measures temperature, frequency, and capacitance
- 40MΩ Resistance Range, 100kHz Frequency, 100μF Capacitance
- -4 to 1832°F Temperature Range (-20° C to 1000° C)

Cleaners & Chemicals

ALL
ITEMS IN
STOCK

*Availability varies by location, please call your local store.



Nu-Calgon specializes in chemical products for the HVAC/R aftermarket and has been an industry leader for over 70 years. The complete line of products include coil cleaners, leak sealants, air purifiers and refrigeration oils, water treatment, ice machine maintenance, and other specialty applications.



**Gas Leak
Detectors**



**Condenser
Cleaners**



**Insulation
Products**



**Refrigeration
& VP Oils**



**Total System
Protection**

OEM PARTS

PARTS

Steel Braided Hoses & Accessories

ALL
ITEMS IN
STOCK

CHAM/Flex
"CLASS A" FIRE RATED
HOSE ASSEMBLIES & KITS

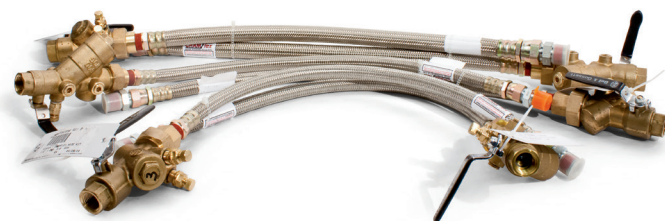
Chamberlin
RUBBER COMPANY, INC.

**CUSTOM SIZES
AVAILABLE**



Fire Retardant Hoses

- Fixed end x Swivel end with JIC MNPT adapter
- Fire rated to meet local building codes
- Inner tube is EPTF - white santoprene with UL-94 VO fire rating
- Outer braid is 302/304 stainless steel wire
- Temperature range -40°F to 212°F (-40° C to 100° C)
- **Application:** for use with water source heat pumps and fan coils
- Water supply and condensate applications



Fire Retardant Hose Kits

- Supply line has combination ball valve & Y-strainer with full port shut-off
- Return line has combination flow controller & ball valve with two ports
- Fire rated to meet local building codes
- Inner tube is EPTF - white santoprene with UL-94 VO fire rating
- Outer braid is 302/304 stainless steel wire
- **Application:** for use with water source heat pumps and fan coils
- Water supply and condensate applications



Push to Connect (PTC) Assemblies

- 1/2" (5/8" OD) & 3/4" (7/8" OD) CTS tube connection
- Tube conforms to ASSE 1061 & IAPMO listed
- Working pressure up to 200 psi
- Temperature range 0°F to 200°F (-17.78° C to 93.33° C)
- Inner tube is EPTF - white santoprene with UL-94 VO fire rating
- Approved tubing: ASTM B88 tube types K, L, M drawn copper tube and annealed copper tube, CPVC water tube per ASTM D2846-2846M-90
- Standard hose lengths: 12", 18", 24", 36" and custom: 6" minimum with 1" increments
- Minimum bend radius: 2.5"



Quick-Sling, LLC by DiversiTech Corp., a leading manufacturer and supplier of HVAC/R parts and accessories. The company provides wholesalers and contractors with greater accessibility to this suite of products that makes installation of air handlers and furnaces quicker, more affordable, more reliable and safer.



Mini Split Wall Bracket, QSWB1000

- Mounted outdoor wall hanger
- 11-gauge square steel tubing
- 4 points of anti-vibration isolation
- Galvanized hardware with 50 derometer rubber washers
- 500 lbs max capacity
- Mounting shelf is 26" in depth and pre-slotted to quickly mount units



Flush Mount with H Bracket, QSWI3000

- Mounts parallel or across joists at 16" or 24" on center
- Allows for 360 unit rotation
- Direct flow of heat for maximum efficiency
- Safety locks into place after installation
- 200 lbs max capacity
- Includes all necessary hardware
- U.S. patent No. 9,103,486



Quick-Sling offers a 2-year warranty on steel and workmanship; Quick-Sling products are coated in accordance with ASTM D3451-06

Refrigerants

ALL
ITEMS IN
STOCK

*Availability varies by location, please call your local store.



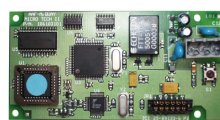
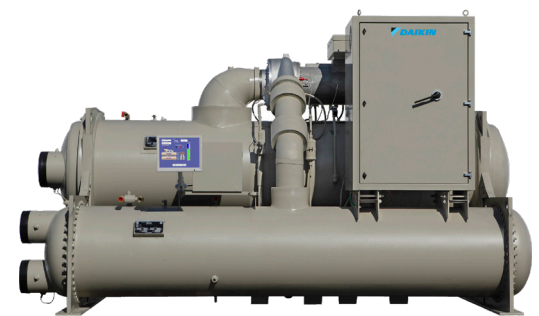
Features:

- R-22 and R-134A available in 30 and 125 lbs cylinders
- R-410A available in 25 lbs cylinders

Refrigerant	Capacity (lbs)
R-134A	30
R-22	30
R-410A	25

Authorized Chiller Parts Distributor

HTS Ontario Parts is **fully-stocked** with a complete line of quality Daikin parts for your chillers.



MicroTech® II Controls for Rooftop and Self-Contained Units

Thermostats

ALL
ITEMS IN
STOCK

*Availability varies by location, please call your local store.

Honeywell

Honeywell T Series thermostats have the features you need for comfort and energy savings. All feature Honeywell's engineering excellence that's delivered comfort and efficiency for more than 100 years, and all are backed by a 5-year warranty for peace of mind.



T6 Pro Z-Wave

- Large, modern and intuitive touchscreen display
- Easy wiring with the UWP mounting system
- Seamless homeowner hand-off, letting you move on to your next project



Lyric T6 Pro Wi-Fi

- ENERGY STAR Certified
- Wi-Fi touchscreen
- Optional dual fuel and ventilation
- Flexible scheduling or geofence technology



T6 Pro

- Push-button programmable
- Optional dual fuel
- Flexible scheduling



T6 Pro Hydronic

- Can be used to control air and floor temperature or both
- Flexible A/AF/F control capabilities



T4 Pro

- Push-button programmable
- Flexible scheduling



T1 Pro

- Non-programmable
- Available in both 1H/1C (heat and cool models) and 1H or 1C only model

PARTS



Ecobee makes Wi-Fi enabled smart thermostats for residential and commercial applications that helps you maximize comfort and savings without compromising your lifestyle.

ecobee for Pro

Great for PTACs in a hotel application.

Works with Omega Heat Pumps.

Compare ecobee thermostats.



Category	Feature	ecobee3 lite	Smart Thermostat Enhanced	Smart Thermostat Premium
		EB-STATE3LTPC-02	EB-STATE6LPC-01	EB-STATE6PC-01
Savings	Annual savings	Up to 23%	Up to 26%	Up to 26%
	Eco+ features	✓	✓	✓
Control	Control through iOS & Android apps and Apple Watch	✓	✓	✓
	Works with all major smart home systems	✓	✓	✓
	Dual-Band Wi-Fi		✓	✓
HVAC System Compatibility	Multi-speed fan support	✓	✓	✓
	Compatibility of 24V heating and cooling systems	~80%	~80%	~80%
	HVAC accessory support	n/a	1-wire acc.	1-wire acc. 2-wire acc.
	Ventilators supported		HRV, ERV, Standard	HRV, ERV, Standard
Design	Usable display size	3300sq mm	5000sq mm	5000sq mm
	Resolution	360x480	540x540	540x540
	Premium industrial design			Metal base
Audio	Alexa & Siri built-in			✓
	Spotify Connect and Bluetooth streaming			✓
Sensors	SmartSensor included			✓
	Occupancy built into t-stat		✓	✓
	Indoor Air Quality Monitor			✓
Warranty	3 year industry leading warranty	✓	✓	✓



SmartSensor for doors and windows EB-DWSHM2PK-01

Get notified about entries, exits, and when motion is detected. Compatible with SmartThermostat Premium, SmartThermostat Enhanced, and ecobee3 lite. Easy set up. Just attach the sensor to the door or window for coverage. For added security, place it on safes, drawers, and medicine cabinets.

SmartBuildings



- Control a single ecobee thermostat or multiple units through our app and web portal.
- Authorize users and generate secure passcodes.
- Organize thermostats, create schedules, and make bulk adjustments.
- Make remote changes through the app.
- For more information, email insidesales@ecobee.com.

Electrical

ALL
ITEMS IN
STOCK

*Availability varies by location, please call your local store.

WiringPRO®

MAKE THE CONNECTION



- Electrical interconnect devices accommodating wire sizes from 22 AWG through 4/0 AWG
- Heavy duty copper lugs and connectors that vary in size from 6 AWG to 250 MCM
- High temperature terminals and special adapters for extreme or sensitive environments
- Nylon cable ties for tying or bundling wires and cables or securing devices of any kind
- Specialty items for routing, identifying and insulating cables and protecting wires from abrasion
- Heat shrinkable tubing that provides insulation, sealing, strain relief and mechanical protection
- New generation of heat shrinkable terminals with sealing technology to protect against environmental problems
- Broad range of application tools and accessories for quick and reliable installations

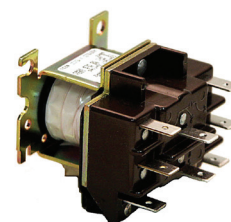
PARTS



Alltemp, a DiversiTech Corp., is a leading distributor of HVAC/R components, well known for their Rotom brand of motors. As a DiversiTech company, order placements and fulfillment is convenient and easy because of their unique ability to manufacture and master distribute products across targeted channel segments.



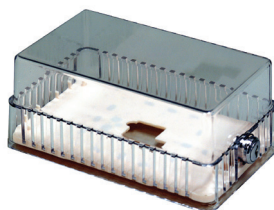
High Limit



High Pressure Switches



Capacitor



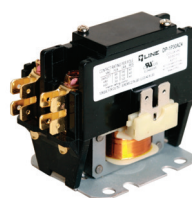
Thermostat Cover



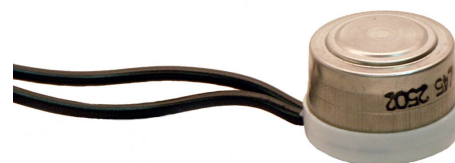
Condensate Pump



Disconnect



Contactors



Freeze stat



Access Fitting

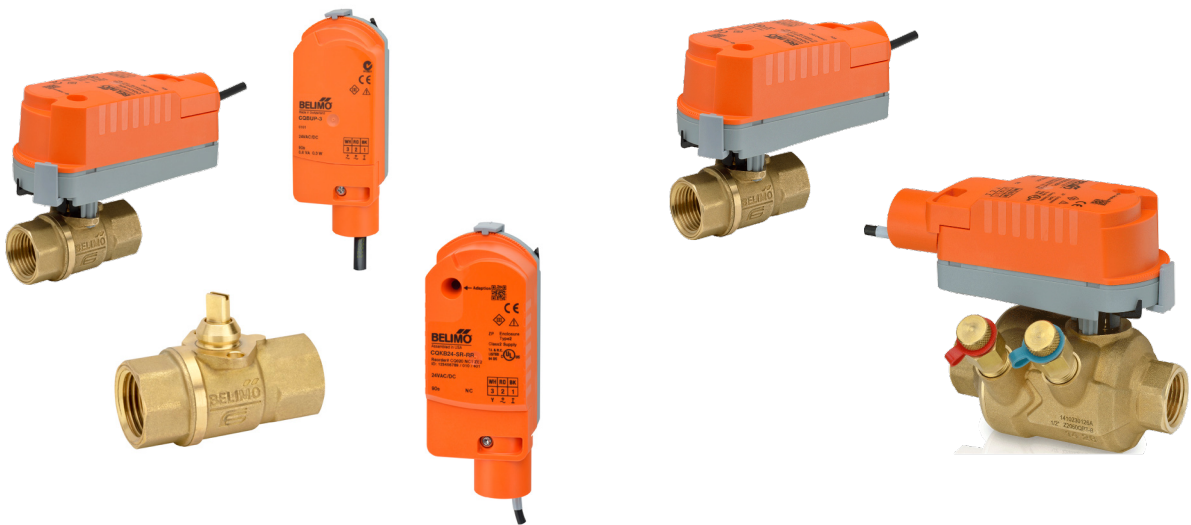
Valves

ALL
ITEMS IN
STOCK

*Availability varies by location, please call your local store.



Belimo – Valves, Valve Actuators, Damper Actuators and Sensors with local Technical Support available, quick delivery and 5 Year warranty.



Zone Valves

CCV Valves



Damper Actuators

Sensors

PARTS

Fan Coil Parts

ALL
ITEMS IN
STOCK

*Availability varies by location, please call your local store.



Honeywell

Water valves, water regulating valves, flared fittings, hose adapters, valve bodies, valve actuators, as well as freeze stats, and aqua stats ***are always in stock.***



Aqua Stats

- 3 wire thermostat switch



Aqua Stats

- 2 wire thermostat switch



Actuators

- 24 volt
- 120 volt



799 Motor

- OEM aftermarket options
- ECM upgrades



Valve Actuator

- 24 volt
- 120 volt



Valve Body

- 2 way
- 3 way



Benefits of a new Aurum Retrofit

With standard, and customizable sizing, Aurum Manufacturing's new fan coil replacement chassis is suitable for almost every high-rise built within the last 50+ years. New Aurum Retrofits are designed to meet and exceed operations of previous fan coil systems by:

- Increasing the airflow in your home
- Increasing energy efficiency in fan coil operations
- Coming equipped with features that increase chance of detecting floods from overflows in drain pan
- Enhancing and creating optimal comfort in your home
- Reducing operation noise
- Lowering fan coil energy consumption
- Decreased air pressure drops with new coil
- Larger surface area of coil

DIMENSIONAL DATA AURUM MANUFACTURING

Aurum Model	Length	Width	Height
BTR350Z/DTR350Z BTR450Z/DTR450Z BTR600Z/DTR600Z	15"	13.75"	23.75"
BTR800Z/DTR800Z	16.5"	13.75"	25.5"
BTR600ZW/DTR600ZW BTR800ZW/DTR800ZW BTR1000ZW/DTR1000ZW	16.5"	17.75"	25.5"
CFC600Z/CFC800Z CFC1000Z/CFC1200Z	20"	20"	50"

Draw Through Retrofit Chassis (DTR Series)



Blow Through Retrofit Chassis (BTR Series)



Closet Fan Coil Retrofit Chassis (CFC Series)



PERFORMANCE DATA AURUM MANUFACTURING

Aurum Model	Total ACFM	GPM Req.	Air Dry Bulb	Air Wet Bulb	% RH	Entering Water Temp	Standard Air Velo	Total SCFM	Total BTUH
BTR350Z DTR350Z	375	1.5	80	67	51.1	45	378	361	11037
BTR450Z DTR450Z	450	2	80	67	51.1	45	454	433	13213
BTR600 DTR600Z	625	3	80	67	51.1	45	433	602	18232
BTR800Z DTR800Z	825	3	80	67	51.1	45	508	794	24733
BTR1000ZW DTR1000ZW	1000	3.5	80	67	51.1	45	474	963	31202
CFC600ZW	600	3	80	67	51.1	45	433	602	18232
CFC800ZW	800	3.5	80	67	51.1	45	508	794	24733
CFC1000ZW	1000	5	80	67	51.1	45	474	963	31202
CFC1200ZW	1200	6	80	67	51.1	45	452	1207	36271

UVC Lighting

ALL
ITEMS IN
STOCK

*Availability varies by location, please call your local store.



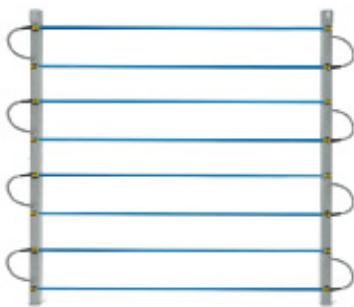
UVDI designs and manufactures proven Ultraviolet Indoor Air Quality technology in California, applying over 70 years of family craftsmanship and care. UVDI's proven UV-C Indoor Air Quality technology is installed in over 10,000 commercial facilities worldwide for advanced air disinfection, air purification and coil cleaning.

UV-C Air Disinfection & Coil Cleaning



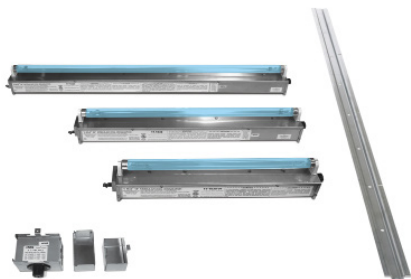
V-MAX™

- Designed for in-duct use
- Prewired lamp connection reduced installation time
- Low power consumption with universal voltage
- Available in 21", 33", 48" and 61" lamps



V-MAX™ Grid

- Designed for installation in the Air Handling Unit
- Easy to install in existing and new equipment
- Scalable design to meet any plenum size
- Lamps can be easily mounted on vertical supports
- Ballast is designed to easily mount in vertical support strut
- Negligible pressure drop
- Low power consumption with universal voltage
- Available in 21", 33", 48" and 61" lamps

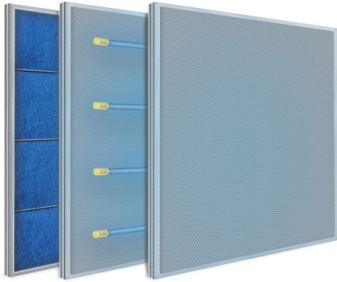


V-MOD®

- Modular design for a range of Air Handling Units
- Patented "plug-n-play" design for ease of installation in both existing and new equipment
- Reduces operating costs: both lowers energy costs and minimizes costly maintenance
- Flexible for use inside access systems
- Replaces potentially dangerous alternative cleaning methods
- Maintains HVAC system capacity

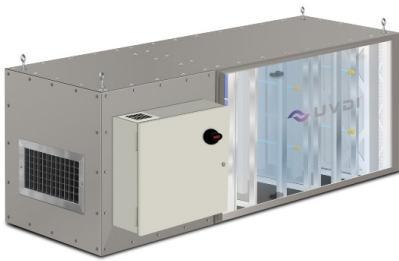
PARTS

UV-C Air Purification



V-PAC® System

- Designed for large Commercial HVAC systems
- 99.9% elimination of SARS-CoV-2 using proven UVDI V-MAX™ technology
- Air purification and contaminant removal
- Reduction of smoke and odors with advanced PCO technology
- Continuously increased air flow for better air movement



V-PAC® PRO

- Flexible installation outside of the HVAC system
- 99.9% elimination of SARS-CoV-2 using proven UVDI V-MAX™ Technology
- Air purification and contaminant removal
- Reduction of smoke and odors with advanced PCO technology
- Continuously increased air flow for better air movement
- Chemical-free; does not produce ozone
- Reduces energy costs: reduces make-up air requirements for dilution and has low power consumption



V-PAC® SC

- Powerful, portable air purification
- 99% elimination of viruses proven in independent laboratory testing
- 93%+ elimination of bacteria
- 99%+ elimination of air particulates and contaminants
- 90%+ reduction of TVOCs
- Safe for use in occupied settings: does not produce ozone or any harmful contaminants

This image shows a blank sheet of white paper with horizontal ruling lines. The lines are evenly spaced and run across the width of the page. There is a small green rectangular tab or piece of tape visible at the bottom right corner.



[illegible]



HTS PARTS & AFTERMARKET

Thank you for showing interest in the HTS Parts & Aftermarket department!

HTS Parts & Aftermarket have been working hard to deliver the best HVAC parts customer service in the city. We have access to the widest variety of HVAC parts and equipment. Stop by HTS Parts & Aftermarket - we will make sure you get what you need to get the job done right. Please see below list of critical parts we stock, along with list of HVAC brand we supply.

Critical Parts:

- Coils
- Compressors
- Filters
- Control boards
- Thermostats
- Sensors
- Belts
- Bearings
- Sheaves
- Motors
- Capacitors
- Contactors
- Fuses
- Transformers
- Disconnects
- Fan Wheels
- Actuators
- Valves
- Hoses
- Vibration Isolation

Air Handling/ Ventilation:

- Daikin/McQuay
- Loren Cook
- Herman Nelson
- IEC Fan Coils
- Acoustiflo
- Addison
- Aermec
- ClimaCool
- Airedale
- Epsilon
- Fantech
- Filtrine
- HAAKON
- Halton
- Innovent
- Plasticair
- Refplus
- Tecogen
- Tempeff

Heating:

- Schwank
- Modine
- Heatcraft
- Sigma
- Viessmann

Water Source Heat Pumps:

- Daikin/McQuay
- Omega

PTAC's/Self Contained Units:

- Applied Comfort
- Napoleon

Humidification:

- Dristeem

Controls:

- Alerton
- Distech Controls
- TSI Controls
- Honeywell
- Ecobee
- Belimo

VFD's:

- Danfoss
- ABB

Other Products:

- AAF Filters
- Kinetics Noise Control
- Lakos Separators
- Biddle Air Curtains
- Snyder General
- Singer
- Chutes
- Johnson Controls
- Copeland
- Tecumseh
- Erie
- UVDI
- Nanosox

Hot Water Tanks:

- PVI

Order Parts Today!

Order your parts by visiting one of our locations, calling our direct lines, or by emailing **parts@hts.com**



North York

555 Oakdale Rd., Unit A
Toronto, ON M3N 1W7

Store Hours:

Mon - Fri, 7:00 a.m. - 5:00 p.m.

Contact Information:

(416) 642-9799



Etobicoke

1571 The Queensway
Etobicoke, ON M8Z 1T8

Store Hours:

Mon - Fri, 7:30 a.m. - 5:00 p.m.

Contact Information:

(416) 642-0176



Scarborough

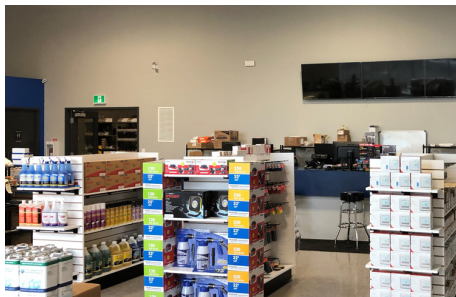
150 Milner Ave, Unit 15
Scarborough, ON M1S 3R3

Store Hours:

Mon - Fri, 7:30 a.m. - 5:00 p.m.

Contact Information:

(416) 642-2625



Ottawa

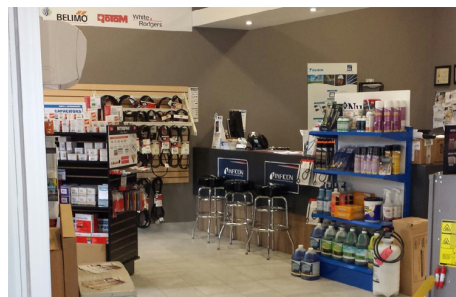
830 Campbell Ave, Unit 101
Ottawa, ON K2A 2C2

Store Hours:

Mon - Fri, 7:30 a.m. - 4:30 p.m.

Contact Information:

(613) 728-0118



London

320 Neptune Crescent
London, ON N6M 1A1

Store Hours:

Mon - Fri, 8:00 a.m. - 4:00 p.m.

Contact Information:

(519) 457-1288

