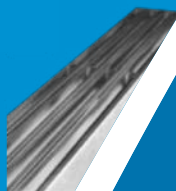
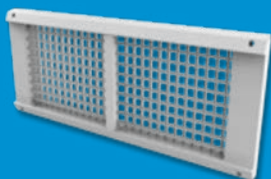




HTS TEXAS CARROLLTON WAREHOUSE

AIRSIDE PRODUCTS GROUP

1645 WALLACE DR SUITE 130,
CARROLLTON, TX 75006



[HTS.COM/SERVICES/APG-TEXAS/](https://www.hts.com/services/apg-texas/)

Table of Contents

01 Introduction

About Us..... 3

02 Air Devices

Ceiling Diffusers..... 4
Double Deflection Supply Grilles.... 8
Plenum Slot & Linear Diffusers..... 9
Egg Crate Return Grilles..... 10
Return Grilles.....11
Return Grilles With FF.....11

03 Air Device Accessories

Round Diffuser Dampers..... 12
Sheetrock Plaster Frame.....12
Insulated Return Hood/Canopy.....12
GRD Accessories..... 13

04 Terminal Units

Single Duct Terminal Unit..... 14
Terminal Unit Accessories..... 15

05 Supply & Exhaust Fans

Downblast Direct Drive.....16
Downblast Belt Drive.....16
Upblast Direct Drive.....17
Upblast Belt Drive.....17
Inline Direct Drive.....18
Gravity Ventilator.....18
Exhaust Fan Accessories.....19

06 Big Ass Fans

Evaporative Cooler.....20
AirEye Portable Fan.....20
Sidekick Portable Fan.....21
Haiku L Ceiling Fan.....21
Accessories.....21

07 Dampers

Curtain Fire Damper.....22

About Us



Delivering Real Success®

HTS Global is the largest independent built-to-order commercial and industrial full-service HVAC distributor in North America. We are committed to the shared success for all involved in the design, selection, installation, and maintenance of the right HVAC solution for each project. Our industry experience spans industrial, institutional, residential and commercial projects of all sizes throughout the US and Canada.

HTS Texas Airside Products Group (APG) Warehouse Operations

In our APG warehouse, you will find everything from high quality grilles, registers, diffusers to VAV terminal units, supply and exhaust fans, overhead and portable fans, dampers, numerous accessories and much, much, more. We are your one-stop shop for all of the equipment you need while making your life easier by providing quality service through accurate equipment selection and estimation, thorough project management, and offering on-going training at our facilities.

Our Guiding Principles

- Honesty and integrity are the foundation for successful business relationships.
- Always operate with a sense of urgency. Our clients differentiate us because of this.
- If we take care of our suppliers, clients and fellow employees and owners, they will take care of us.
- We keep our word. **Always.**



1450 | Ceiling Supply Diffuser

- Steel
- 3-Cone Diffuser
- Layin Ceiling Type
- White Paint Finish

Panel Size	Round Inlet Size	CFM Range
24x24	6"	35 - 220
24x24	8"	65 - 385
24x24	10"	105 - 600
24x24	12"	155 - 865
24x24	14"	210 - 1,070

Panel Size	Round Inlet Size	CFM Range
12x12	6"	35 - 220
12x12	8"	70 - 350



PLQ | Ceiling Supply Diffuser

- Steel
- Plaque Diffuser
- Layin Ceiling Type
- White Paint Finish

Panel Size	Round Inlet Size	CFM Range
24x24	6"	35 - 220
24x24	8"	65 - 385
24x24	10"	105 - 600
24x24	12"	155 - 865
24x24	14"	210 - 1,070

Panel Size	Round Inlet Size	CFM Range
12x12	6"	35 - 220
12x12	8"	70 - 350

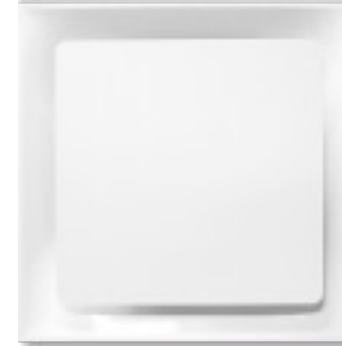


51450 | Ceiling Supply Diffuser

- Aluminum
- 3-Cone Diffuser
- Layin Ceiling Type
- White Paint Finish

Panel Size	Round Inlet Size	CFM Range
24x24	6"	35 - 220
24x24	8"	65 - 385
24x24	10"	105 - 600
24x24	12"	155 - 865
24x24	14"	210 - 1,070

Panel Size	Round Inlet Size	CFM Range
12x12	6"	35 - 220
12x12	8"	70 - 350



5PLQ | Ceiling Supply Diffuser

- Aluminum
- Plaque Diffuser
- Layin Ceiling Type
- White Paint Finish

Panel Size	Round Inlet Size	CFM Range
24x24	6"	35 - 220
24x24	8"	65 - 385
24x24	10"	105 - 600
24x24	12"	155 - 865
24x24	14"	210 - 1,070

Panel Size	Round Inlet Size	CFM Range
12x12	6"	35 - 220
12x12	8"	70 - 350

AIR DEVICES

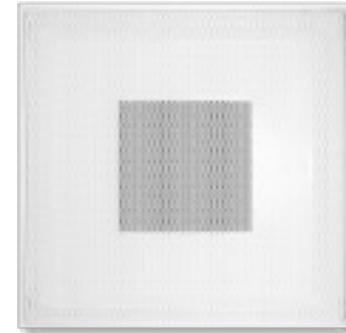


6600 | Ceiling Supply Diffuser

- Steel
- Perforated Diffuser with Face Mounted Deflectors
- Layin Ceiling Type
- White Paint Finish

Panel Size	Round Inlet Size	CFM Range
12x12	6"	55 - 220

Panel Size	Round Inlet Size	CFM Range
24x24	6"	55 - 220
24x24	8"	105 - 385
24x24	10"	160 - 520
24x24	12"	235 - 630
24x24	14"	320 - 855
24x24	16"	415 - 980



6490 | Ceiling Return Diffuser

- Steel
- Perforated Diffuser Return
- No Deflectors
- Layin Ceiling Type
- White Paint Finish

Panel Size	Rectangular Inlet Size	CFM Max
12x12	10x10	765
24x12	22x10	1,685
24x24	22x22	3,700
48x24	46x22	6,325

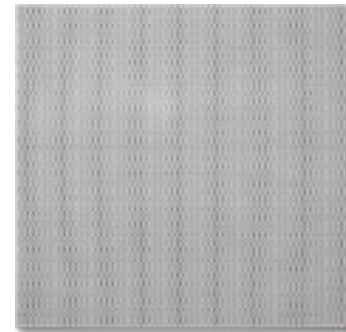


6690 | Ceiling Return Diffuser

- Steel
- Perforated Diffuser Return
- No Deflectors
- Layin Ceiling Type
- White Paint Finish

Panel Size	Round Inlet Size	CFM Max
12x12	6"	220

Panel Size	Round Inlet Size	CFM Max
24x24	6"	220
24x24	8"	385
24x24	10"	600
24x24	12"	905
24x24	14"	1,175
24x24	16"	1,535



6790 | Ceiling Return Diffuser

- Steel
- Perforated Screen Only
- Layin Ceiling Type
- White Paint Finish

Panel Size	CFM Max
12x12	1,100
24x12	2,200
24x24	4,000
48x24	7,200

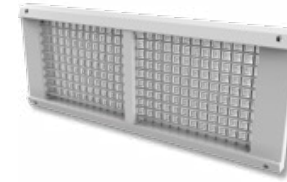
AIR DEVICES



880V w/OBD | Double Deflection Supply Grilles

- Steel
- Double Deflection Supply Grille with Opposed Blade Damper
- Surface Mount with Screw Holes
- 3/4" Blade Spacing
- Adjustable Blades
- Vertical Front Blades
- White Paint Finish

Rectangular Inlet Size	Rectangular Inlet Size	Rectangular Inlet Size	Rectangular Inlet Size
6x4	12x8	16x10	24x8
6x6	12x10	16x12	24x10
8x4	12x12	18x6	24x12
8x6	14x6	18x8	30x6
8x8	14x8	18x10	30x8
10x4	14x10	18x12	30x10
10x6	14x10	20x6	30x12
10x8	14x12	20x8	36x6
10x10	14x14	20x10	36x8
12x4	16x6	20x12	36x10
12x6	16x8	24x6	36x12

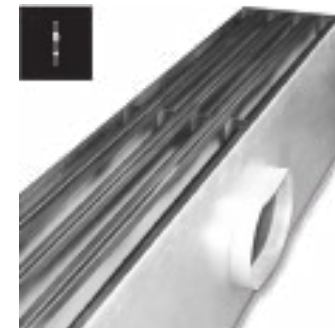


5DMGDU | Double Deflection Supply Duct Grilles

- Aluminum
- Vertical Front Blades
- Extractor Damper
- 10 Alumican Paint

Rectangular Inlet Size	Duct Diameter Range
12x3	6" - 36"
12x4	10" - 36"
12x6	12" - 36"
14x3	6" - 36"
14x4	10" - 36"
14x6	12" - 36"

Rectangular Inlet Size	Duct Diameter Range
18x3	6" - 36"
18x4	10" - 36"
18x6	12" - 36"
24x3	6" - 36"
24x4	10" - 36"
24x6	12" - 36"



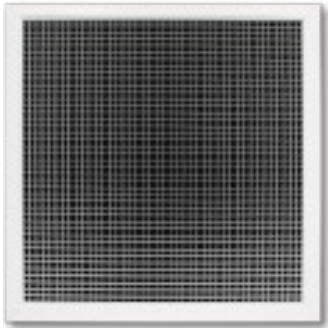
PTBS | Plenum Slot Diffuser

- Plenum Slot Diffuser
- 1/4" Insulation
- Black Face Rails
- All Ceiling Tees By Others
- MTT2 Mounting Tabs On Both Sides

Length	Oval Inlet Size	Number of Slots	Slot/s Width
24	6	1	1.5"
24	8	1	1.5"
48	8	1	1.5"
48	10	1	1.5"
48	12	1	1.5"

Length	Oval Inlet Size	Number of Slots	Slot/s Width
24	6	2	1.0"
24	8	2	1.0"
48	8	2	1.0"
48	10	2	1.0"
48	12	2	1.0"

AIR DEVICES



EGC5 | Egg Crate Return Grille

- Aluminum
- Egg Crate Return Grille
- No Screw Holes
- Laying Ceiling Type
- White Paint Finish

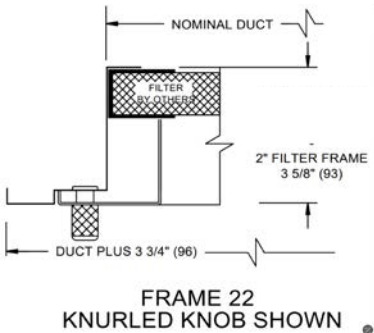
Panel Size	Rectangular Inlet Size
12x12	10x10
24x12	22x10
24x24	22x22
48x24	46x22



S80H | Return Grilles

- Steel
- Return Grille
- Surface Mount with Screw Holes
- 3/4" Blade Spacing
- 35 Degree Blade Deflection
- Horizontal Front Blades
- White Paint Finish

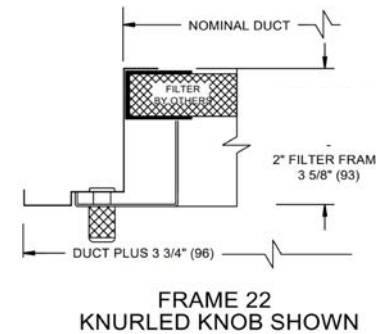
Rectangular Inlet Size	Rectangular Inlet Size	Rectangular Inlet Size	Rectangular Inlet Size
6x6	10x10	14x8	18x18
8x4	12x6	14x10	24x12
8x6	12x8	14x12	24x24
8x8	12x10	14x14	36x24
10x6	12x12	16x16	48x24
10x8	14x6	18x12	



EGC5 w/ FF | Egg Crate Return Grille

- Aluminum
- Egg Crate Return Grille with Filter Frame
- No Screw Holes
- White Paint Finish

Panel Size	Rectangular Inlet Size
24x12	20x8
24x24	20x20
48x24	44x20



S80H w/ FF | Return Grille

- Steel
- Return Grille with Filter Frame
- 3/4" Blade Spacing
- 35 Degree Blade Deflection
- No Screw Holes
- Horizontal Front Blades
- White Paint Finish

Panel Size	Rectangular Inlet Size
24x24	20x20
48x24	44x20



PRN100 | Round Diffuser

Damper

- Steel
- Round Radial Damper
- Neck Mounted
- Mill Finish

Round Inlet Size
6"
8"
10"
12"
14"



5HCF23 | Sheetrock Plaster Frame

- Aluminum
- Plaster Frame
- White Paint Finish

Rectangular Inlet Size
12x12
24x12
24x24
48x24



KRH | Insulated Return Hood/Canopy

- Steel
- Insulated Return Hood/Canopy

Rectangular Inlet Size
12x12
24x12
24x24
48x24

Touch-up Spray Paint

Part ID	Color
00PT18	#44 British White
601500350	#35 Black
601500400	#10 Alumican (12 oz)

Push-On Deflector Fastener

- Part ID: 10031101
- For 6400/6600 Series Deflector

Screws for Grilles & Registers

- #8 x 1 1/2"
- 2 screws per bag ordered

Part ID	Color
10408901	#44 British White
10408902	#01 Mill

Knob

- Part ID: 10351001
- Knurled for filter grilles
- Ships as unpainted mill

Molded Insulated Backpan

- 24"x24" panel

Part ID	Series
72413401	1400/PLQ Series R6
72439801	6400/6600 Series R6



LMHS | Single Duct Terminal Unit

- Single Duct Terminal Unit
- Standard 1/2" Dual Density Liner
- 120v/24v Transformer
- Hanger Brackets
- Controls Enclosure
- Toggle Disconnect Switch

Round Inlet Size	CFM Max
6	515
8	920
10	1,430
12	2,060
14	2,800
16	3,660

LMHS Hot Water Coils

Part ID	Rows	Size
00-20020-02	2	04-06
00-20021-02	2	07-08
00-20023-02	2	09-10
00-20024-02	2	12
00-20025-02	2	14
00-20030-02	2	16

Transformers

Part ID	Voltage	VA
10029301	120 volts to 24 volts	50
10006601	277 volts to 24 volts	50
10057501	208/240 volts to 24 volts	50

TERMINAL UNITS



DDD | Downblast Direct Drive

- Direct Drive Downblast Roof Fan
- NEMA 1 Disconnect Switch-Unfused
- Speed Controller - Not Wired
- Galvanized Birdscreen
- Aluminum Backdraft Damper
- PSC/Induction Motor

Part ID	Voltage/phase	Induction Motor	CFM Range at 0.25"SP	Curb Size
DDD 77	115/1	1/30HP	50 - 150	15.5 x 15.5
DDD 85	115/1	1/30HP	75 - 250	15.5 x 15.5
DDD 98	115/1	1/8HP	150 - 500	15.5 x 15.5
DDD 120	115/1	1/4HP	250 - 1,000	15.5 x 15.5



UDD | Upblast Direct Drive

- Direct Drive Upblast Roof Fan
- NEMA 1 Disconnect Switch-Unfused
- Speed Controller - Not Wired
- Galvanized Birdscreen
- Aluminum Backdraft Damper

Part ID	Voltage/phase	Induction Motor	CFM Range at 0.25"SP	Curb Size
UDD 85	115/1	1/15HP	75 - 250	15.5 x 15.5
UDD 98	115/1	1/8HP	300 - 500	18.5 x 18.5
UDD 122	115/1	1/4HP	350 - 1,000	22.5 x 22.5



DBD | Downblast Belt Drive

- Belt Driven Downblast Roof Fan
- NEMA 1 Disconnect Switch-Unfused
- Variable Speed Belt Drive
- Galvanized Birdscreen
- Aluminum Backdraft Damper

Part ID	Voltage/phase	Induction Motor	CFM Range at 0.25"SP	Curb Size
DBD 70	115/1	1/4HP	150 - 350	15.5 x 15.5
DBD 100	115/1	1/4HP	250 - 500	18.5 x 18.5
DBD 160	115/1	1/4HP	800 - 1,500	24.5 x 24.5
DBD 240	208/3	1/4HP	1,000 - 3,000	32.5 x 32.5



UBD | Upblast Belt Drive

- Belt Drive Upblast Roof Fan
- NEMA 1 Disconnect Switch-Unfused
- Variable Speed Belt Drive
- Galvanized Birdscreen

Part ID	Voltage/phase	Induction Motor	CFM Range at 0.25"SP	Curb Size
UBD 122	115/1	1/3HP	250 - 1,300	22.5 x 22.5
UBD 140	230/3	1/2HP	600 - 2,000	22.5 x 22.5

SUPPLY & EXHAUST





IDD | Inline Direct Drive

- Direct Drive Inline Fan
- NEMA 1 Disconnect Switch-Unfused
- Speed Controller - Not Wired
- Aluminum Backdraft Damper

Part ID	Voltage/phase	Induction Motor	CFM Range at 0.25"SP	Curb Size
IDD 80	115/1	1/8HP	50 - 400	n/a
IDD 90	115/1	1/8HP	325 - 750	n/a
IDD 100	115/1	1/3HP	400 - 1,000	n/a
IDD 120	115/1	1/4HP	500 - 1,250	n/a



Roof Curb | Accessories

- Canted Roof Curb
- 12" tall
- 3" built-in Cant
- 1.5" wood nailer
- 1.5" lined
- damper shelf

Part ID	Dimensions
Fan Curb	15.0x15.0
Fan Curb	15.5x15.5
Fan Curb	18.5x18.5
Fan Curb	22.5x22.5
Fan Curb	24.5x24.5
Fan Curb	32.5x32.5



GRV | Gravity Ventilator

- Round Gravity Ventilator
- Galvanized Birdscreen
- Aluminum Backdraft Damper

Part ID	CFM Range at 0.25"SP	Curb Size
GRV 90	0 - 700	15.0 x 15.0
GRV 120	0 - 1,300	22.5 x 22.5
GRV 160	0 - 2,300	22.5 x 22.5

SUPPLY & EXHAUST



Cool-Space 350 | Evaporative Cooler

- 50-gallon reservoir (up to 10 hours without hose)
- Variable speed dial and pump switch
- Ideal for large outdoor patios
- Up to 2,300 Square Feet (3,400 CFM)



Cool-Space 400 | Evaporative Cooler

- 46-gallon reservoir (up to 10 hours without hose)
- Variable speed dial and pump switch
- Ideal for large factories, warehouses, & gyms
- Up to 3,600 Square Feet (6,700 CFM)



Cool-Space 500 | Evaporative Cooler

- 64-gallon reservoir (up to 10 hours without hose)
- Onboard LED control panel w/ occupancy sensor
- Ideal for large warehouses, service bays, and stadiums
- Up to 6,500 Square Feet (24,000 CFM)

Part ID	Cool-Space	Fan Size	Voltage/Phase
E-350-2001	350	20"	120V/1Ph
F-EV1-3601	400	36"	120V/1Ph
F-EV1-5001	500	50"	120V/1Ph



AirEye | Portable Fan F-AE1-3001 & M-AE1-1600

- 30" Diameter
- 120V/1PH
- Black Guards
- Yellow Blades
- Yellow AirEye Low Rider/ Pedestal Mount Kit



Sidekick | Portable Fan F-SK1-4801

- Portable Fan
- 48" Diameter
- 120V/1Ph
- 12' Power Cord

Sidekick Portable Fan Accessories

Part ID	Description
010264	Sidekick Waterproof Cover
009882	Sidekick Extra Handle



Haiku L | Ceiling Fan FR127C-U1H00-3L02

- Ceiling Fan Kit
- 52" Diameter
- 100-240V/1PH
- LED 2700K
- Universal Mount
- Indoor Rated Only
- WiFi
- 5" Downrod Included



Part ID	Motor Color	Hybrid Resin Airfoils
09259-259P610	White	White
09258-258P610	Black	Black

Haiku L Accessories

Part ID	Downrod	Color
TM3491-22-001	22"	White
TM3491-22-002	22"	Black
TM3491-35-001	34.8"	White
TM3491-35-002	34.8"	Black

Dampers

AIR BALANCE

air balance



Dynamic Curtain Fire Damper

D19XCV

- 1 1/2 Hr Rated Dynamic
- Round both ends
- 2000 fpm
- 4" WG
- 12" sleeve length 22ga

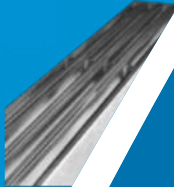
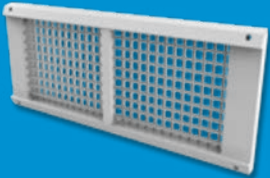
Round Both Ends
6
8
10
12
14

SUPPLY & EXHAUST

WE REPRESENT TOP HVAC MANUFACTURERS



202403



HTS.COM/SERVICES/APG-TEXAS/